



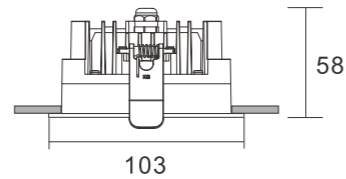
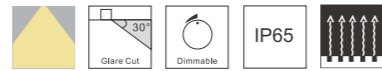
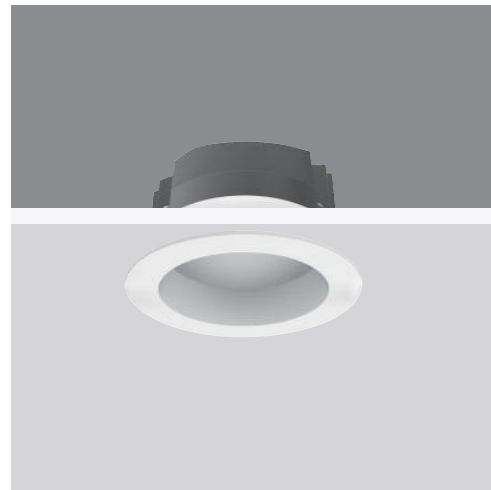
Recessed downlight, optional size 3", 4", 6", and 8".
Die-casting aluminum lamp body and face ring.
Reasonable inner structure, firm and reliable, easy for
installation.
IP65 available



- High brightness LED SMD with Ra>80, the lighting efficiency of the whole lamp is more than 100lm/w.
- Different cutout sizes for options, to meet different needs.
- Heat dissipation structure with die casting aluminum conduct heat effectively and quickly to guarantee the normal lifespan of the LED.
- Superior PMMA transparent cover, distributing uniform luminous beam

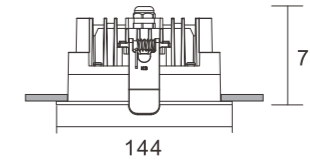
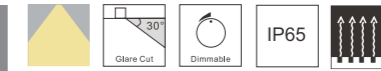
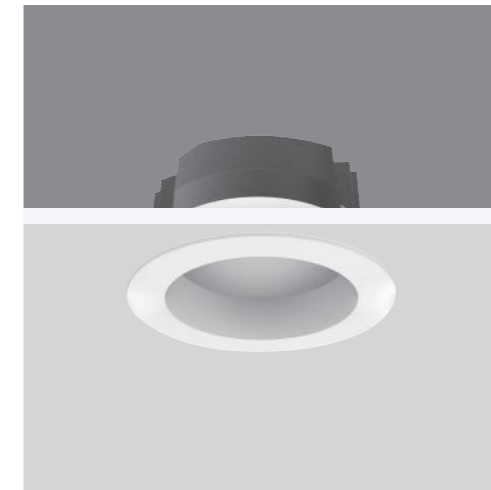
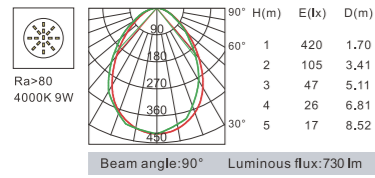


Model	KAS-DL03-D-3	KAS-DL03-D-4	KAS-DL03-D-6	KAS-DL03-D-8
Product Photo				
Dimension(mm)				
Cutout(mm)	90	125-135	160-175	200-215
Wattage	9W	15W/20W	20W/30W/40W	30W/40W/50W
CCT	2700K 3000K 3500K 4000K 5000K	2700K 3000K 3500K 4000K 5000K	2700K 3000K 3500K 4000K 5000K	2700K 3000K 3500K 4000K 5000K
CRI	>80	>80	>80	>80
Beam Angle	90°	90°	90°	90°
Lumen	810LM	1500-2000LM	2000-4000LM	3000-5000LM
IP	IP 65	IP 65	IP 65	IP 65
Dimming	TRIAC/1-10V/DALI	TRIAC/1-10V/DALI	TRIAC/1-10V/DALI	TRIAC/1-10V/DALI
Colour	White+Iron gray	White+Iron gray	White+Iron gray	White+Iron gray



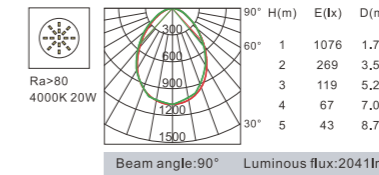
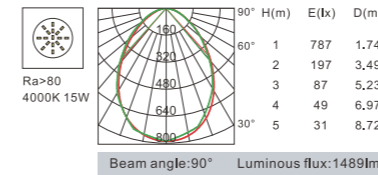
⌀ 90mm

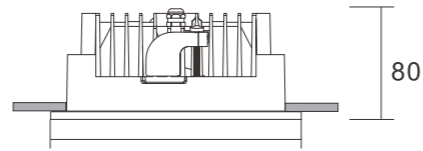
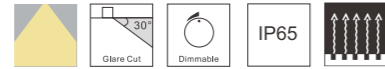
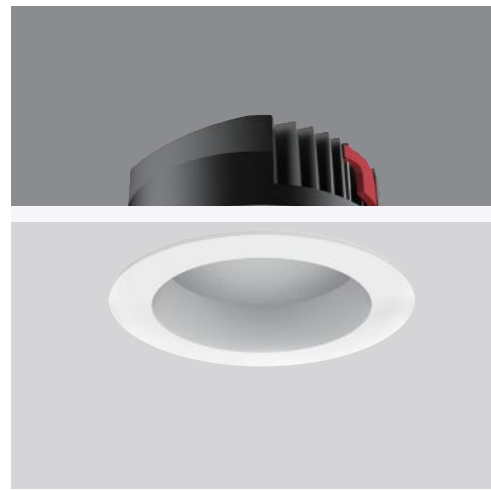
Model	Power	LED voltage	LED Current	CRI	CCT	Beam Angle	LED Output	System output	Dimming Type
KAS-DL03-D-309	9W	36V	200mA	90	2700K	90°	720lm	678lm	ON-OFF TRIAC 1-10V DALI
	9W	36V	200mA	90	3000K	90°	775lm	730lm	ON-OFF TRIAC 1-10V DALI
	9W	36V	200mA	90	4000K	90°	825lm	778lm	ON-OFF TRIAC 1-10V DALI



⌀ 125-135mm

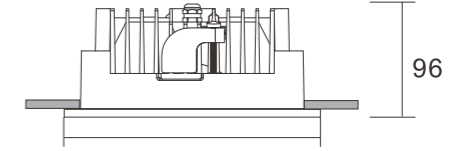
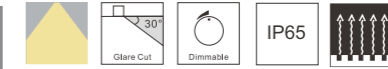
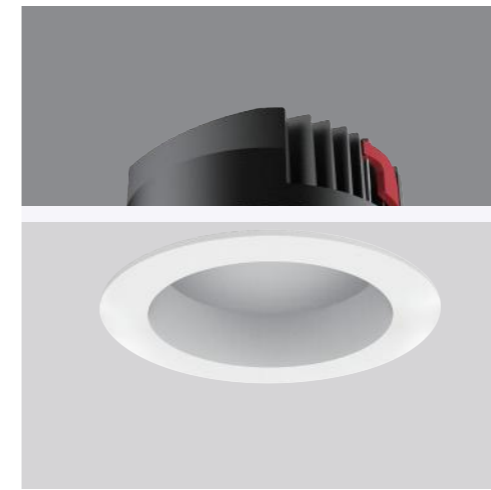
Model	Power	LED voltage	LED Current	CRI	CCT	Beam Angle	LED Output	System output	Dimming Type
KAS-DL03-D-415	15W	36V	350mA	90	2700K	90°	1560lm	1041lm	ON-OFF TRIAC 1-10V DALI
	15W	36V	350mA	90	3000K	90°	1950lm	1302lm	ON-OFF TRIAC 1-10V DALI
	15W	36V	350mA	90	4000K	90°	2230lm	1489lm	ON-OFF TRIAC 1-10V DALI
KAS-DL03-D-420	20W	36V	500mA	90	2700K	90°	1595lm	1253lm	ON-OFF TRIAC 1-10V DALI
	20W	36V	500mA	90	3000K	90°	2160lm	1698lm	ON-OFF TRIAC 1-10V DALI
	20W	36V	500mA	90	4000K	90°	2595lm	2041lm	ON-OFF TRIAC 1-10V DALI





183
⌀ 160-175mm

Model	Power	LED voltage	LED Current	CRI	CCT	Beam Angle	LED Output	System output	Dimming Type
KAS-DL03-D-620	20W	36V	500mA	90	2700K	90°	1595lm	1298lm	ON-OFF TRIAC 1-10V DALI
	20W	36V	500mA	90	3000K	90°	2160lm	1759lm	ON-OFF TRIAC 1-10V DALI
	20W	36V	500mA	90	4000K	90°	2595lm	2114lm	ON-OFF TRIAC 1-10V DALI
KAS-DL03-D-630	30W	36V	700mA	90	2700K	90°	1814lm	1418lm	ON-OFF TRIAC 1-10V DALI
	30W	36V	700mA	90	3000K	90°	3024lm	2364lm	ON-OFF TRIAC 1-10V DALI
	30W	36V	700mA	90	4000K	90°	3628lm	2837lm	ON-OFF TRIAC 1-10V DALI
KAS-DL03-D-640	40W	36V	900mA	90	2700K	90°	3430lm	3318lm	ON-OFF TRIAC 1-10V DALI
	40W	36V	900mA	90	3000K	90°	3888lm	3762lm	ON-OFF TRIAC 1-10V DALI
	40W	36V	900mA	90	4000K	90°	4105lm	3972lm	ON-OFF TRIAC 1-10V DALI



226
⌀ 200-215mm

Model	Power	LED voltage	LED Current	CRI	CCT	Beam Angle	LED Output	System output	Dimming Type
KAS-DL03-D-830	30W	36V	700mA	90	2700K	90°	1814lm	1521lm	ON-OFF TRIAC 1-10V DALI
	30W	36V	700mA	90	3000K	90°	3924lm	3292lm	ON-OFF TRIAC 1-10V DALI
	30W	36V	700mA	90	4000K	90°	3628lm	3044lm	ON-OFF TRIAC 1-10V DALI
KAS-DL03-D-840	40W	36V	900mA	90	2700K	90°	3933lm	3624lm	ON-OFF TRIAC 1-10V DALI
	40W	36V	900mA	90	3000K	90°	4471lm	4121lm	ON-OFF TRIAC 1-10V DALI
	40W	36V	900mA	90	4000K	90°	4728lm	4352lm	ON-OFF TRIAC 1-10V DALI
KAS-DL03-D-850	50W	36V	1200mA	90	2700K	90°	5447lm	5156lm	ON-OFF TRIAC 1-10V DALI
	50W	36V	1200mA	90	3000K	90°	5961lm	5643lm	ON-OFF TRIAC 1-10V DALI
	50W	36V	1200mA	90	4000K	90°	6274lm	5940lm	ON-OFF TRIAC 1-10V DALI