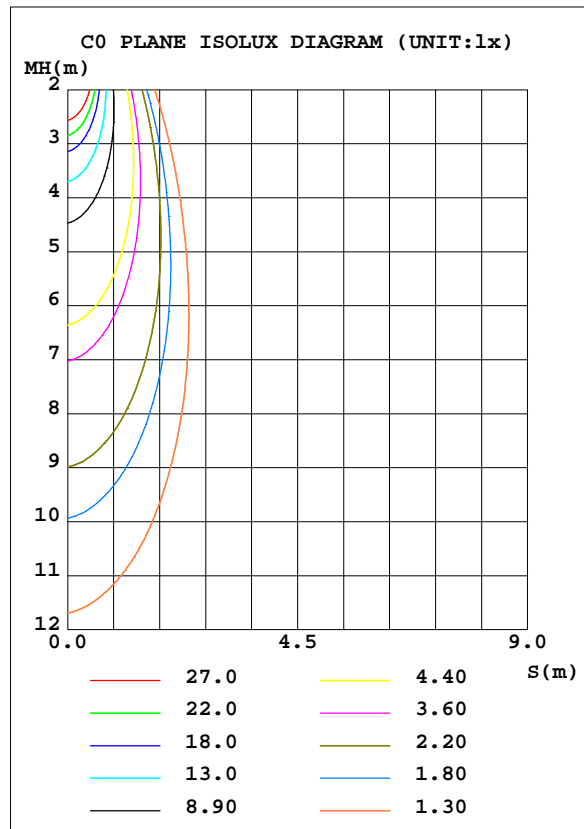
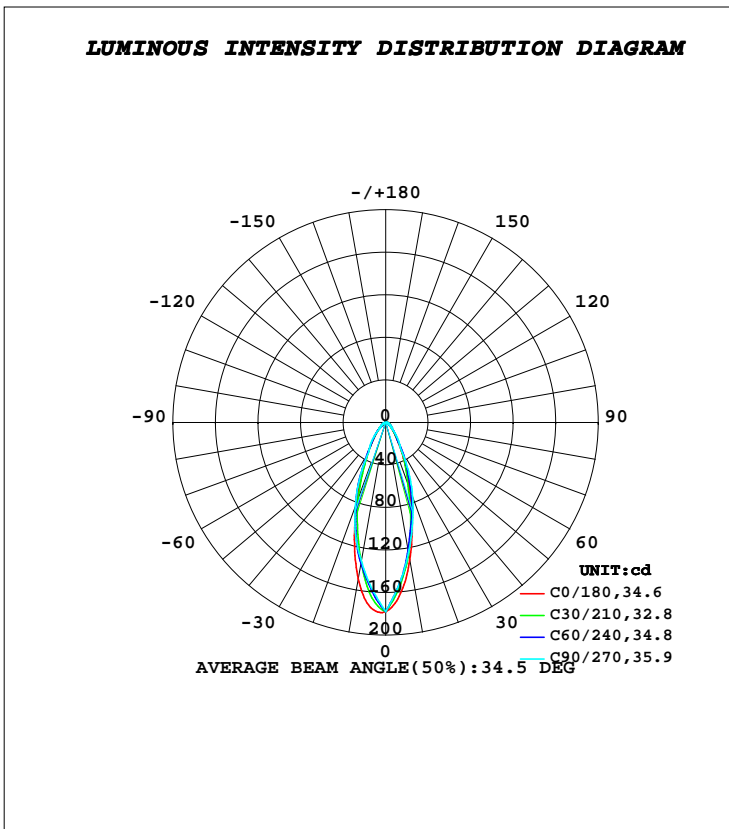


LUMINAIRE PHOTOMETRIC TEST REPORT

Test:U:24.000V I:0.0500A P:1.0000W PF:1.0000 Freq:50.00Hz Lamp Flux:92.4809x1 lm		
NAME: KS-TMDM-1W-A	TYPE:	WEIGHT:
SPEC.:	DIM.:	SERIAL No.:KS-TMDM-1W-A
MFR.: KAMS	SUR.:	Shielding Angle:

DATA OF LAMP		PHOTOMETRIC DATA Eff: 92.48 lm/W			
MODEL	KS-TMDM-1W-A	I _{max} (cd)	178.8	S/MH(C0/180)	0.60
NOMINAL POWER(W)	1	LOR(%)	100.0	S/MH(C90/270)	0.60
RATED VOLTAGE(V)	24	TOTAL FLUX(lm)	92.481	η UP, DN(C0-180)	0.0,47.4
NOMINAL FLUX(lm)	92.4809	CIE CLASS	DIRECT	η UP, DN(C180-360)	0.0,52.6
LAMPS INSIDE	1	η up(%)	0.0	CIBSE SHR NOM	0.50
TEST VOLTAGE(V)	24	η down(%)	100.0	CIBSE SHR MAX	0.60



H(β) Range:-90 - 90DEG
H(β) Interval: 1.0DEG
Test Speed: HIGH
Temperature:25.3DEG
Operators:DAMIN
Test Date:2022-08-09

V(B) Range:-75 - 75DEG
V(B) Interval: 5.0DEG
Test System:EVERFINE GO-2000B_V1 SYSTEM V2.0.400
Humidity:65.0%
Test Distance:9.200m [K=1.0000]
Remarks:

ZONAL FLUX DIAGRAM

ZONAL FLUX DIAGRAM:

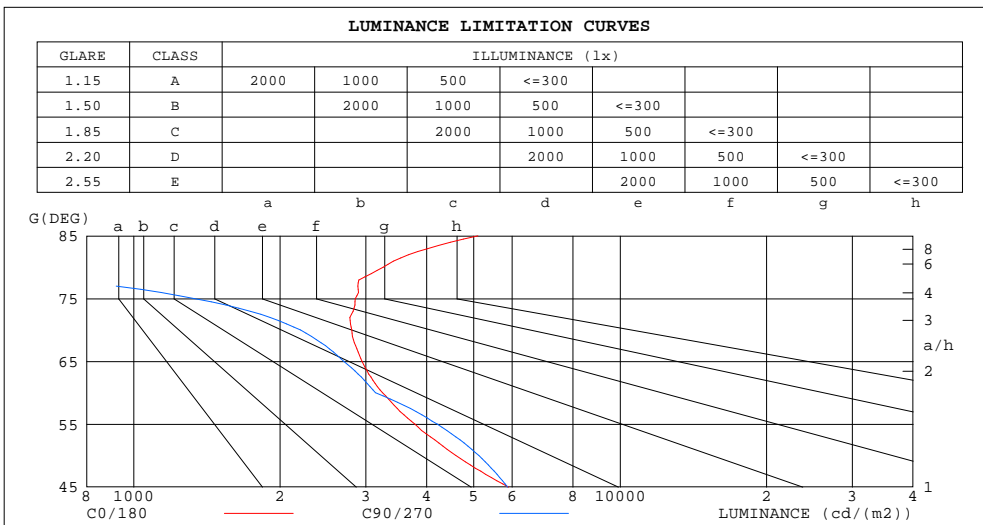
γ	C0	C45	C90	C135	C180	C225	C270	C315	γ	Φ zone	Φ total	%lum,lamp
10	131.2	122.3	124.3	127.8	149.3	133.7	132.3	126.5	0- 10	14.15	14.15	15.3,15.3
20	66.33	67.25	74.38	68.78	79.73	77.46	83.83	72.37	10- 20	27.57	41.72	45.1,45.1
30	27.72	29.82	27.95	28.15	34.06	36.56	32.34	31.82	20- 30	22.66	64.38	69.6,69.6
40	12.09	12.23	14.86	7.836	14.58	14.78	17.03	12.90	30- 40	12.79	77.17	83.4,83.4
50	5.908	6.303	6.587	5.741	6.882	7.329	7.430	6.582	40- 50	7.022	84.19	91,91
60	3.246	3.426	3.139	3.128	3.611	3.806	3.546	3.610	50- 60	4.092	88.28	95.5,95.5
70	1.919	1.931	1.506	1.671	2.000	2.113	2.222	2.106	60- 70	2.465	90.75	98.1,98.1
80	1.132	0.9722	0	0.7491	1.094	0.9032	0	1.081	70- 80	1.441	92.19	99.7,99.7
90	0.8072	0	0	0	0.7371	0	0	0	80- 90	0.2925	92.48	100,100
100									90-100			
110									100-110			
120									110-120			
130									120-130			
140									130-140			
150									140-150			
160									150-160			
170									160-170			
180									170-180			
DEG	LUMINOUS INTENSITY:cd									UNIT:lm		

H(β) Range:-90 - 90DEG
H(β) Interval: 1.0DEG
Test Speed: HIGH
Temperature:25.3DEG
Operators:DAMIN
Test Date:2022-08-09

V(B) Range:-75 - 75DEG
V(B) Interval: 5.0DEG
Test System:EVERFINE GO-2000B_V1 SYSTEM V2.0.400
Humidity:65.0%
Test Distance:9.200m [K=1.0000]
Remarks:

LUMINANCE LIMITATION CURVES

Test:U:24.000V I:0.0500A P:1.0000W PF:1.0000 Freq:50.00Hz Lamp Flux:92.4809x1 lm		
NAME: KS-TMDM-1W-A	TYPE:	WEIGHT:
SPEC.:	DIM.:	SERIAL No.:KS-TMDM-1W-A
MFR.: KAMS	SUR.:	Shielding Angle:



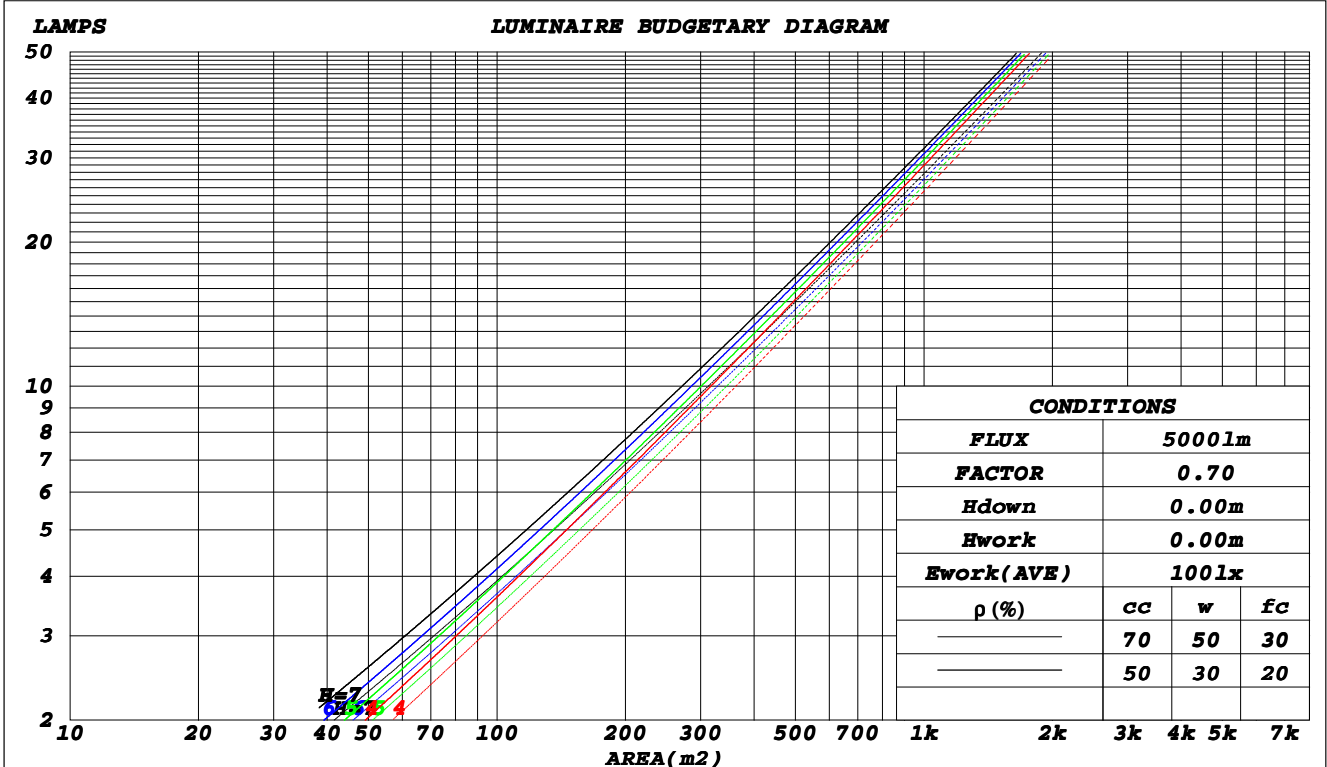
H(β) Range:-90 - 90DEG
H(β) Interval: 1.0DEG
Test Speed: HIGH
Temperature:25.3DEG
Operators:DAMIN
Test Date:2022-08-09

V(B) Range:-75 - 75DEG
V(B) Interval: 5.0DEG
Test System:EVERFINE GO-2000B_V1 SYSTEM V2.0.400
Humidity:65.0%
Test Distance:9.200m [K=1.0000]
Remarks:

CU AND LUMINAIRE BUDGETARY ESTIMATE DIAGRAM

Test:U:24.000V I:0.0500A P:1.0000W PF:1.0000 Freq:50.00Hz Lamp Flux:92.4809xl lm		
NAME: KS-TMDM-1W-A	TYPE:	WEIGHT:
SPEC.:	DIM.:	SERIAL No.:KS-TMDM-1W-A
MFR.: KAMS	SUR.:	Shielding Angle:

ρ_{cc}	80%			70%			50%			30%			10%			0
ρ_w	50%	30%	10%	50%	30%	10%	50%	30%	10%	50%	30%	10%	50%	30%	10%	0
ρ_{fc}	20%			20%			20%			20%			20%			0
RCR	RCR:Room Cavity Ratio						Coefficients of Utilization(CU)									
0.0	1.19	1.19	1.19	1.16	1.16	1.16	1.11	1.11	1.11	1.06	1.06	1.06	1.02	1.02	1.02	.00
1.0	1.10	1.07	1.05	1.08	1.05	1.03	1.04	1.02	.00	.00	.98	.97	.97	.95	.94	.92
2.0	1.02	.97	.94	.00	.96	.93	.97	.93	.91	.94	.91	.89	.91	.89	.87	.85
3.0	.95	.89	.85	.93	.88	.84	.90	.86	.83	.88	.85	.82	.86	.83	.80	.79
4.0	.88	.82	.78	.87	.82	.78	.85	.80	.77	.83	.79	.76	.81	.78	.75	.73
5.0	.83	.77	.72	.82	.76	.72	.80	.75	.71	.78	.74	.71	.77	.73	.70	.69
6.0	.78	.72	.67	.77	.71	.67	.76	.70	.67	.74	.70	.66	.73	.69	.66	.64
7.0	.74	.67	.63	.73	.67	.63	.72	.66	.63	.70	.66	.62	.69	.65	.62	.61
8.0	.70	.64	.59	.69	.63	.59	.68	.63	.59	.67	.62	.59	.66	.62	.59	.57
9.0	.66	.60	.56	.66	.60	.56	.65	.60	.56	.64	.59	.56	.63	.59	.56	.54
10.0	.63	.57	.53	.62	.57	.53	.62	.57	.53	.61	.56	.53	.60	.56	.53	.52



H(β) Range:-90 - 90DEG
H(β) Interval: 1.0DEG
Test Speed: HIGH
Temperature:25.3DEG
Operators:DAMIN
Test Date:2022-08-09

V(B) Range:-75 - 75DEG
V(B) Interval: 5.0DEG
Test System:EVERFINE GO-2000B_V1 SYSTEM V2.0.400
Humidity:65.0%
Test Distance:9.200m [K=1.0000]
Remarks:

WEC AND CCEC

Test:U:24.000V I:0.0500A P:1.0000W PF:1.0000 Freq:50.00Hz Lamp Flux:92.4809x1 lm		
NAME: KS-TMDM-1W-A	TYPE:	WEIGHT:
SPEC.:	DIM.:	SERIAL No.:KS-TMDM-1W-A
MFR.: KAMS	SUR.:	Shielding Angle:

ρ_{cc}	80%			70%			50%			30%			10%			0
ρ_w	50%	30%	10%	50%	30%	10%	50%	30%	10%	50%	30%	10%	50%	30%	10%	0
ρ_{fc}	20%			20%			20%			20%			20%			0
RCR	RCR:Room Cavity Ratio						Wall Exitance Coefficients(WEC)									
0.0																
1.0	.193	.110	.035	.187	.106	.034	.174	.100	.032	.162	.094	.030	.151	.088	.028	
2.0	.183	.101	.031	.178	.098	.030	.167	.093	.029	.157	.088	.028	.148	.084	.026	
3.0	.173	.092	.028	.168	.090	.027	.159	.086	.026	.150	.082	.025	.142	.079	.024	
4.0	.162	.084	.025	.158	.083	.024	.150	.080	.024	.143	.077	.023	.136	.074	.023	
5.0	.153	.078	.023	.150	.077	.022	.143	.074	.022	.136	.072	.021	.130	.070	.021	
6.0	.145	.073	.021	.142	.071	.021	.135	.069	.020	.130	.067	.020	.125	.066	.019	
7.0	.137	.068	.019	.134	.067	.019	.129	.065	.019	.124	.064	.018	.119	.062	.018	
8.0	.130	.064	.018	.128	.063	.018	.123	.061	.018	.118	.060	.017	.114	.059	.017	
9.0	.124	.060	.017	.122	.059	.017	.117	.058	.016	.113	.057	.016	.110	.056	.016	
10.0	.118	.057	.016	.116	.056	.016	.112	.055	.016	.109	.054	.015	.105	.053	.015	

ρ_{cc}	80%			70%			50%			30%			10%			0
ρ_w	50%	30%	10%	50%	30%	10%	50%	30%	10%	50%	30%	10%	50%	30%	10%	0
ρ_{fc}	20%			20%			20%			20%			20%			0
RCR	RCR:Room Cavity Ratio						Ceiling Cavity Exitance Coefficients(CCEC)									
0.0	.190	.190	.190	.163	.163	.163	.111	.111	.111	.064	.064	.064	.020	.020	.020	
1.0	.172	.157	.144	.147	.135	.124	.101	.093	.085	.058	.054	.050	.019	.017	.016	
2.0	.158	.132	.111	.135	.114	.096	.093	.079	.067	.053	.046	.039	.017	.015	.013	
3.0	.146	.114	.088	.125	.098	.076	.086	.068	.054	.050	.040	.032	.016	.013	.010	
4.0	.135	.099	.071	.116	.086	.062	.080	.060	.044	.046	.035	.026	.015	.011	.008	
5.0	.127	.088	.059	.109	.076	.051	.075	.053	.036	.043	.031	.021	.014	.010	.007	
6.0	.119	.078	.049	.102	.068	.043	.071	.047	.030	.041	.028	.018	.013	.009	.006	
7.0	.112	.071	.042	.096	.061	.036	.067	.043	.026	.039	.025	.015	.013	.008	.005	
8.0	.106	.064	.036	.091	.056	.031	.063	.039	.022	.037	.023	.013	.012	.008	.004	
9.0	.101	.059	.031	.087	.051	.027	.060	.036	.019	.035	.021	.011	.011	.007	.004	
10.0	.096	.055	.027	.083	.047	.024	.057	.033	.017	.033	.020	.010	.011	.006	.003	

H(β) Range:-90 - 90DEG
H(β) Interval: 1.0DEG
Test Speed: HIGH
Temperature:25.3DEG
Operators:DAMIN
Test Date:2022-08-09

V(B) Range:-75 - 75DEG
V(B) Interval: 5.0DEG
Test System:EVERFINE GO-2000B_V1 SYSTEM V2.0.400
Humidity:65.0%
Test Distance:9.200m [K=1.0000]
Remarks:

UGR(Unified Glare Rating) Table

Test:U:24.000V I:0.0500A P:1.0000W PF:1.0000 Freq:50.00Hz Lamp Flux:92.4809x1 lm										
NAME: KS-TMDM-1W-A					TYPE:			WEIGHT:		
SPEC.:					DIM.:			SERIAL No.:KS-TMDM-1W-A		
MFR.: KAMS					SUR.:			Shielding Angle:		
ceiling/cavity	0.7	0.7	0.5	0.5	0.3	0.7	0.7	0.5	0.5	0.3
walls	0.5	0.3	0.5	0.3	0.3	0.5	0.3	0.5	0.3	0.3
working plane	0.2	0.2	0.2	0.2	0.2	0.2	0.2	0.2	0.2	0.2
Room dimensions	Viewed crosswise					Viewed endwise				
x = 2H y = 2H	22.6	23.6	22.8	23.7	23.9	23.0	24.0	23.2	24.1	24.3
3H	23.4	24.3	23.7	24.5	24.7	23.5	24.4	23.8	24.6	24.8
4H	23.8	24.7	24.1	24.9	25.2	23.6	24.5	23.9	24.7	25.0
6H	24.3	25.2	24.6	25.4	25.6	23.6	24.4	23.9	24.6	24.9
8H	24.6	25.4	24.9	25.7	25.9	23.5	24.3	23.9	24.6	24.8
12H	25.0	25.7	25.3	26.0	26.3	23.5	24.2	23.8	24.5	24.8
4H 2H	22.9	23.7	23.1	24.0	24.2	23.2	24.1	23.5	24.3	24.5
3H	23.9	24.7	24.2	24.9	25.2	24.0	24.7	24.3	25.0	25.3
4H	24.5	25.2	24.9	25.5	25.8	24.3	25.0	24.6	25.3	25.6
6H	25.2	25.8	25.6	26.1	26.5	24.3	24.9	24.7	25.2	25.6
8H	25.6	26.1	26.0	26.5	26.9	24.2	24.8	24.6	25.1	25.5
12H	26.1	26.6	26.5	27.0	27.3	24.2	24.7	24.6	25.1	25.4
8H 4H	24.7	25.3	25.1	25.6	26.0	24.5	25.1	24.9	25.4	25.8
6H	25.6	26.1	26.1	26.5	26.9	24.6	25.0	25.0	25.4	25.8
8H	26.2	26.6	26.6	27.0	27.4	24.5	24.9	24.9	25.3	25.8
12H	26.9	27.2	27.3	27.7	28.1	24.4	24.8	24.9	25.2	25.7
12H 4H	24.7	25.2	25.1	25.6	26.0	24.6	25.1	25.0	25.4	25.8
6H	25.6	26.0	26.1	26.4	26.9	24.6	25.0	25.1	25.4	25.9
8H	26.2	26.5	26.6	27.0	27.4	24.5	24.9	25.0	25.3	25.8
Variations with the observer position at spacings:										
S = 1.0H	+ 0.5 / - 0.6					+ 0.8 / - 1.0				
1.5H	+ 0.5 / - 0.5					+ 1.5 / - 0.7				
2.0H	+ 0.7 / - 0.6					+ 1.0 / - 1.1				

CIE Pub.117, 92.48 lm Total Lamp Luminous Flux Correct ($8\log(F/F_0) = -8.3$)

H(β) Range:-90 - 90DEG
H(β) Interval: 1.0DEG
Test Speed: HIGH
Temperature:25.3DEG
Operators:DAMIN
Test Date:2022-08-09

V(B) Range:-75 - 75DEG
V(B) Interval: 5.0DEG
Test System:EVERFINE GO-2000B_V1 SYSTEM V2.0.400
Humidity:65.0%
Test Distance:9.200m [K=1.0000]
Remarks:

UTILIZATION FACTORS TABLE

Test:U:24.000V I:0.0500A P:1.0000W PF:1.0000 Freq:50.00Hz Lamp Flux:92.4809x1 lm		
NAME: KS-TMDM-1W-A	TYPE:	WEIGHT:
SPEC.:	DIM.:	SERIAL No.:KS-TMDM-1W-A
MFR.: KAMS	SUR.:	Shielding Angle:

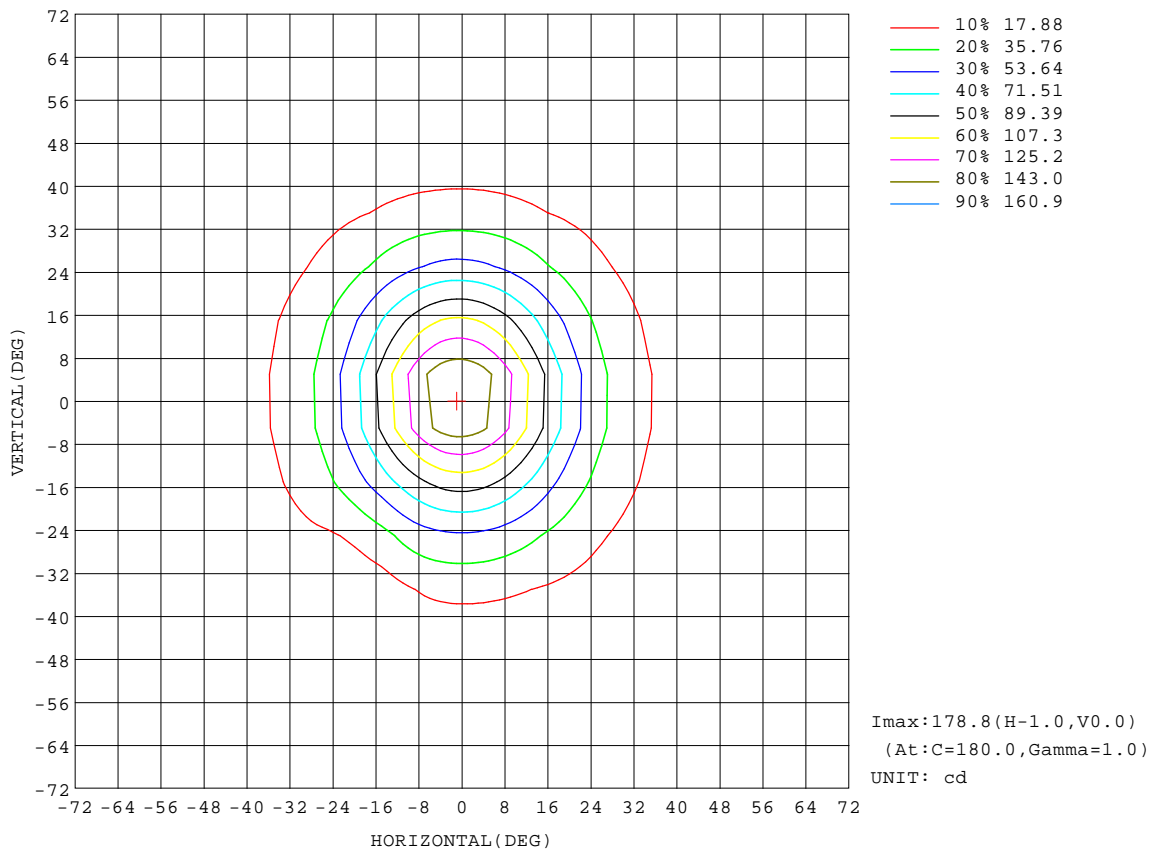
REFLECTANCE										
Ceiling	0.8	0.8	0.8	0.7	0.7	0.7	0.5	0.5	0.5	0
Walls	0.7	0.5	0.3	0.7	0.5	0.3	0.7	0.5	0.3	0
Working plane	0.2	0.2	0.2	0.2	0.2	0.2	0.2	0.2	0.2	0
ROOM INDEX	UTILIZATION FACTORS(PERCENT) $k(RI) \times RCR = 5$									
k = 0.60	81	74	69	81	74	69	80	73	69	65
0.80	89	82	78	89	82	78	87	81	77	73
1.00	95	88	84	94	87	83	92	88	83	78
1.25	99	93	89	98	92	88	96	91	88	83
1.50	102	97	93	101	96	92	99	94	91	86
2.00	106	101	97	104	100	96	102	98	95	89
2.50	108	103	100	106	102	99	103	100	97	91
3.00	110	106	103	108	104	102	105	102	99	93
4.00	112	109	106	110	107	105	107	104	102	95
5.00	114	111	109	112	109	107	108	106	104	96
ROOM INDEX	UF(total)									Direct
According to DIN EN 13032-2 2004			Suspended				SHRNOM = 1.25			

H(β) Range:-90 - 90DEG
H(β) Interval: 1.0DEG
Test Speed: HIGH
Temperature:25.3DEG
Operators:DAMIN
Test Date:2022-08-09

V(B) Range:-75 - 75DEG
V(B) Interval: 5.0DEG
Test System:EVERFINE GO-2000B_V1 SYSTEM V2.0.400
Humidity:65.0%
Test Distance:9.200m [K=1.0000]
Remarks:

ISOCANDELA DIAGRAM

Test:U:24.000V I:0.0500A P:1.0000W PF:1.0000 Freq:50.00Hz Lamp Flux:92.4809x1 lm		
NAME: KS-TMDM-1W-A	TYPE:	WEIGHT:
SPEC.:	DIM.:	SERIAL No.:KS-TMDM-1W-A
MFR.: KAMS	SUR.:	Shielding Angle:



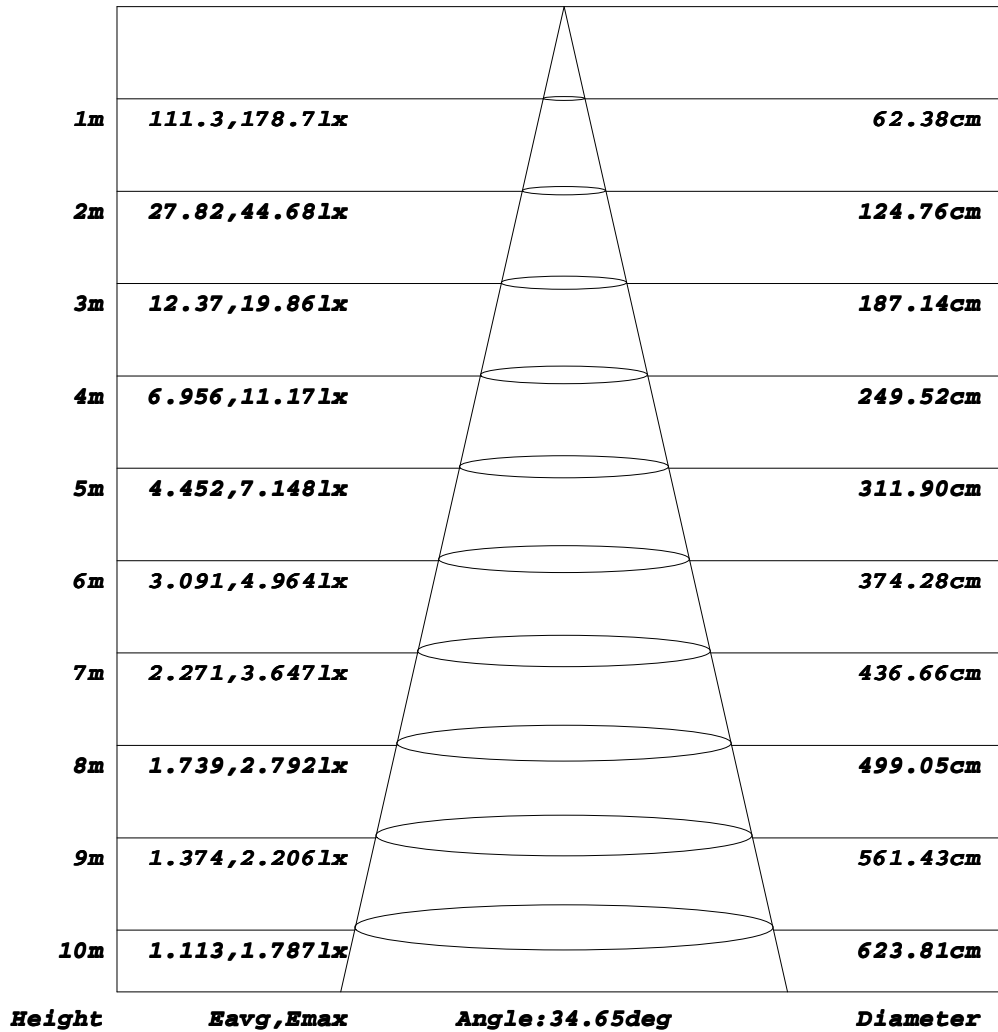
H(β) Range: -90 - 90DEG
H(β) Interval: 1.0DEG
Test Speed: HIGH
Temperature: 25.3DEG
Operators: DAMIN
Test Date: 2022-08-09

V(B) Range: -75 - 75DEG
V(B) Interval: 5.0DEG
Test System: EVERFINE GO-2000B_V1 SYSTEM V2.0.400
Humidity: 65.0%
Test Distance: 9.200m [K=1.0000]
Remarks:

AAI Figure

Test:U:24.000V I:0.0500A P:1.0000W PF:1.0000 Freq:50.00Hz Lamp Flux:92.4809x1 lm		
NAME: KS-TMDM-1W-A	TYPE:	WEIGHT:
SPEC.:	DIM.:	SERIAL No.:KS-TMDM-1W-A
MFR.: KAMS	SUR.:	Shielding Angle:

Flux out:34.76 lm



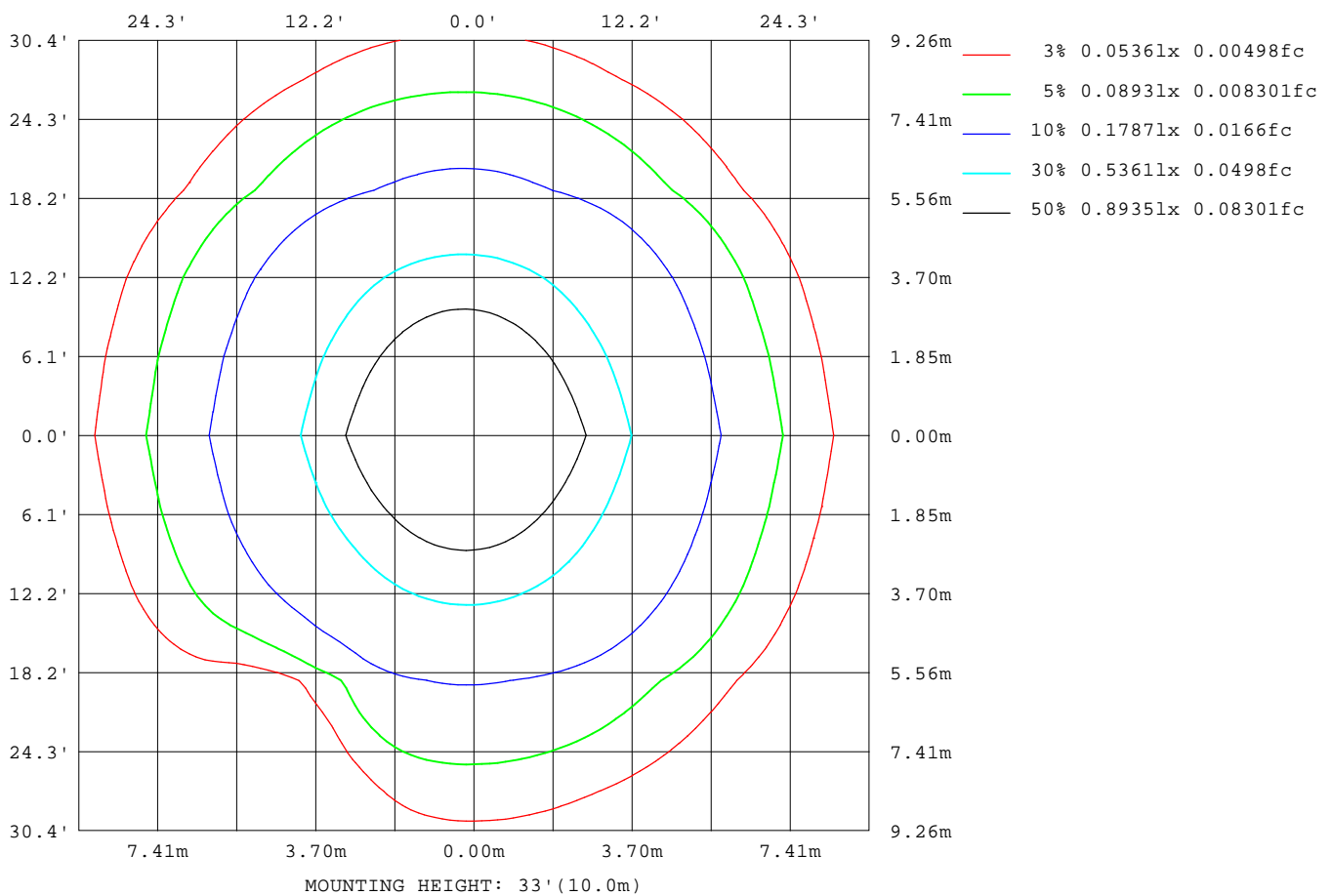
Note: The Curves indicate the illuminated area and the average illumination when the luminaire is at different distance.

H(β) Range: -90 - 90DEG
 H(β) Interval: 1.0DEG
 Test Speed: HIGH
 Temperature: 25.3DEG
 Operators: DAMIN
 Test Date: 2022-08-09

V(B) Range: -75 - 75DEG
 V(B) Interval: 5.0DEG
 Test System: EVERFINE GO-2000B_V1 SYSTEM V2.0.400
 Humidity: 65.0%
 Test Distance: 9.200m [K=1.0000]
 Remarks:

ISOLUX DIAGRAM

Test:U:24.000V I:0.0500A P:1.0000W PF:1.0000 Freq:50.00Hz Lamp Flux:92.4809x1 lm		
NAME: KS-TMDM-1W-A	TYPE:	WEIGHT:
SPEC.:	DIM.:	SERIAL No.:KS-TMDM-1W-A
MFR.: KAMS	SUR.:	Shielding Angle:



H(β) Range:-90 - 90DEG
H(β) Interval: 1.0DEG
Test Speed: HIGH
Temperature:25.3DEG
Operators:DAMIN
Test Date:2022-08-09

V(B) Range:-75 - 75DEG
V(B) Interval: 5.0DEG
Test System:EVERFINE GO-2000B_V1 SYSTEM V2.0.400
Humidity:65.0%
Test Distance:9.200m [K=1.0000]
Remarks:

LED Avg.L Report

Test:U:24.000V I:0.0500A P:1.0000W PF:1.0000 Freq:50.00Hz Lamp Flux:92.4809x1 lm		
NAME: KS-TMDM-1W-A	TYPE:	WEIGHT:
SPEC.:	DIM.:	SERIAL No.:KS-TMDM-1W-A
MFR.: KAMS	SUR.:	Shielding Angle:

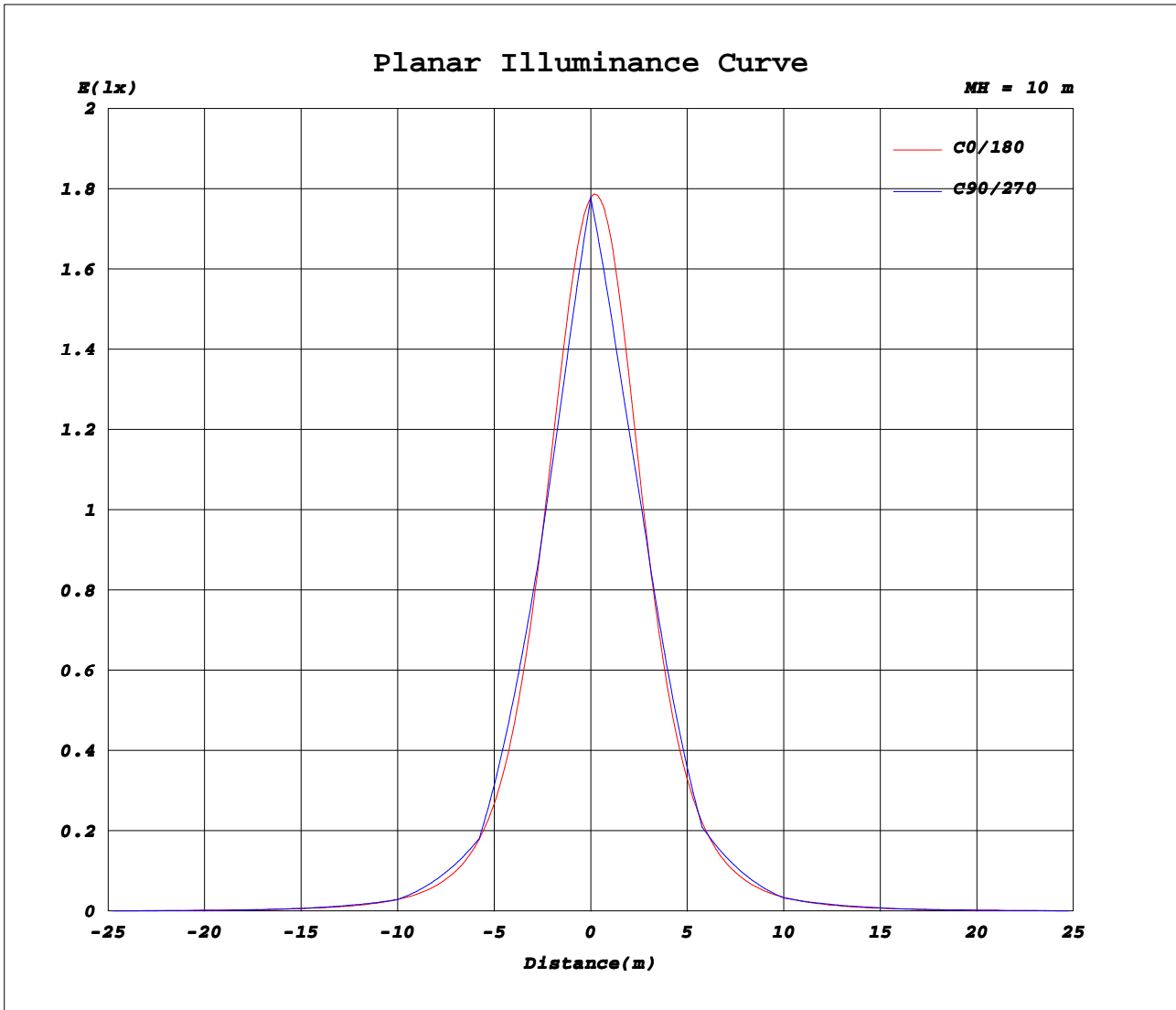
AvgL	cd/m2
L_0~180(65)av	3055
L_0~180(75)av	2862
L_0~180(85)av	4968
L_90~270(65)av	3061
L_90~270(75)av	2172
L_90~270(85)av	0
L_45(65)av	3084
L_45(75)av	2931
L_45(85)av	0

Standard: GB/T 29293-2012

H(β) Range:-90 - 90DEG
H(β) Interval: 1.0DEG
Test Speed: HIGH
Temperature:25.3DEG
Operators:DAMIN
Test Date:2022-08-09

V(B) Range:-75 - 75DEG
V(B) Interval: 5.0DEG
Test System:EVERFINE GO-2000B_V1 SYSTEM V2.0.400
Humidity:65.0%
Test Distance:9.200m [K=1.0000]
Remarks:

Planar Illuminance Curve



H(β) Range: -90 - 90DEG
H(β) Interval: 1.0DEG
Test Speed: HIGH
Temperature: 25.3DEG
Operators: DAMIN
Test Date: 2022-08-09

V(B) Range: -75 - 75DEG
V(B) Interval: 5.0DEG
Test System: EVERFINE GO-2000B_V1 SYSTEM V2.0.400
Humidity: 65.0%
Test Distance: 9.200m [K=1.0000]
Remarks:

LUMINOUS DISTRIBUTION INTENSITY DATA

Test:U:24.000V I:0.0500A P:1.0000W PF:1.0000 Freq:50.00Hz Lamp Flux:92.4809x1 lm		
NAME: KS-TMDM-1W-A	TYPE:	WEIGHT:
SPEC.:	DIM.:	SERIAL No.:KS-TMDM-1W-A
MFR.: KAMS	SUR.:	Shielding Angle:

Table--2

UNIT: cd

C (DEG) \ γ (DEG)	95	100	105	110	115	120	125	130	135	140	145	150	155	160	165	170	175	180	185
0	178	178	178	178	178	178	178	178	178	178	178	178	178	178	178	178	178	178	178
5	152	152	152	153	153	154	155	156	157	158	159	161	163	165	167	169	171	174	172
10	125	125	126	126	127	127	127	128	128	128	128	129	131	134	137	141	145	149	145
15	97.7	97.7	97.7	97.6	97.7	97.9	98.2	98.5	99.1	99.5	98.6	97.9	97.3	97.2	99.9	104	109	114	109
20	74.8	74.9	74.7	74.2	73.2	72.0	70.5	69.1	68.8	69.3	70.0	70.9	69.8	68.6	67.8	70.5	74.7	79.7	75.3
25	51.2	51.2	51.0	50.6	50.0	49.2	48.5	48.0	47.0	46.3	45.9	46.6	47.3	47.1	45.7	45.5	48.8	52.8	49.2
30	28.3	28.9	29.5	29.4	28.2	26.3	25.9	26.7	28.2	29.7	29.9	29.9	30.3	31.0	30.6	29.5	31.1	34.1	31.5
35	21.2	20.7	19.4	17.0	13.7	11.4	10.2	11.9	14.3	16.9	19.1	20.1	19.8	19.9	20.6	19.7	20.1	22.1	20.3
40	14.8	14.4	12.7	9.77	7.15	5.96	5.64	6.35	7.84	10.7	12.3	13.3	13.8	13.2	13.5	13.4	13.2	14.6	13.3
45	8.10	7.28	4.97	3.48	2.93	2.95	3.48	5.25	7.31	8.24	8.76	8.91	9.13	9.34	8.99	9.40	8.86	9.88	8.97
50	6.31	5.15	2.74	1.20	0.84	0.98	2.13	4.36	5.74	6.27	6.27	6.44	6.32	6.46	6.41	6.51	6.30	6.88	6.37
55	4.19	2.82	1.50	0.87	0.79	0.96	1.92	3.45	4.13	4.50	4.65	4.53	4.67	4.53	4.75	4.56	4.60	4.93	4.66
60	2.59	1.23	0.85	0.74	0.75	0.97	1.78	2.57	3.13	3.25	3.18	3.36	3.31	3.46	3.31	3.34	3.43	3.61	3.47
65	1.65	0.86	0.74	0.72	0.72	0.73	0.85	1.57	2.26	2.37	2.47	2.40	2.44	2.44	2.56	2.54	2.55	2.67	2.60
70	1.28	0.80	0.72	0.72	0.73	0.75	0.95	1.43	1.67	1.73	1.81	1.80	1.82	1.78	1.81	1.82	1.84	2.00	1.88
75	0.70	0.71	0.71	0.72	0.73	0.77	0.92	1.16	1.28	1.34	1.33	1.34	1.35	1.35	1.29	1.37	1.36	1.49	1.41
80	0.01	0.02	0.05	0.09	0.15	0.24	0.40	0.57	0.75	0.94	0.96	0.97	1.00	1.01	0.98	0.96	1.00	1.09	1.07
85	0.00	0.00	0.00	0.00	0.00	0.00	0.00	0.00	0.00	0.00	0.00	0.00	0.26	0.64	0.78	0.80	0.74	0.84	0.78
90	0.00	0.00	0.00	0.00	0.00	0.00	0.00	0.00	0.00	0.00	0.00	0.00	0.00	0.00	0.00	0.00	0.00	0.74	0.00

H(β) Range:-90 - 90DEG
H(β) Interval: 1.0DEG
Test Speed: HIGH
Temperature:25.3DEG
Operators:DAMIN
Test Date:2022-08-09

V(B) Range:-75 - 75DEG
V(B) Interval: 5.0DEG
Test System:EVERFINE GO-2000B_V1 SYSTEM V2.0.400
Humidity:65.0%
Test Distance:9.200m [K=1.0000]
Remarks:

LUMINOUS DISTRIBUTION INTENSITY DATA

Test:U:24.000V I:0.0500A P:1.0000W PF:1.0000 Freq:50.00Hz Lamp Flux:92.4809x1 lm		
NAME: KS-TMDM-1W-A	TYPE:	WEIGHT:
SPEC.:	DIM.:	SERIAL No.:KS-TMDM-1W-A
MFR.: KAMS	SUR.:	Shielding Angle:

Table--4

UNIT: cd

C (DEG) \ γ (DEG)	285	290	295	300	305	310	315	320	325	330	335	340	345	350	355				
0	178	178	178	178	178	178	178	178	178	178	178	178	178	178	178				
5	155	155	155	155	155	155	155	155	156	156	157	157	158	159	160				
10	130	129	128	127	127	126	127	127	127	128	128	128	128	129	130				
15	107	106	104	102	99.6	97.2	94.9	93.1	93.2	93.7	94.7	96.2	95.8	95.5	95.8				
20	80.1	78.9	77.6	76.3	75.2	74.3	72.4	69.3	66.5	64.0	64.1	65.2	66.9	66.5	66.0				
25	56.6	55.5	54.1	52.4	50.5	49.0	48.7	48.4	48.1	45.0	42.5	41.8	43.0	44.2	43.3				
30	33.0	33.5	34.0	34.3	34.4	33.4	31.8	30.3	30.2	30.5	29.3	27.4	27.2	28.4	28.1				
35	23.4	22.5	21.5	20.5	19.6	20.6	20.9	20.7	19.6	19.0	19.5	18.9	17.5	18.2	18.5				
40	16.3	15.9	15.6	15.2	14.6	13.8	12.9	13.1	13.4	12.9	12.4	12.9	12.2	12.0	12.5				
45	9.82	10.00	10.1	10.0	9.90	9.83	9.68	9.13	8.64	8.94	8.73	8.51	8.84	8.15	8.72				
50	7.08	6.90	6.76	6.57	6.58	6.67	6.58	6.64	6.53	6.15	6.26	6.10	6.19	5.99	6.12				
55	5.36	5.25	5.14	5.01	4.90	4.83	4.76	4.74	4.67	4.75	4.51	4.61	4.41	4.59	4.45				
60	3.60	3.65	3.71	3.74	3.75	3.68	3.61	3.57	3.57	3.47	3.53	3.37	3.45	3.45	3.30				
65	2.82	2.78	2.74	2.69	2.63	2.71	2.76	2.77	2.70	2.72	2.68	2.68	2.60	2.58	2.55				
70	2.21	2.20	2.20	2.19	2.17	2.16	2.11	2.06	2.09	2.12	2.09	2.10	2.09	2.09	2.07				
75	1.63	1.65	1.66	1.68	1.68	1.69	1.68	1.67	1.65	1.60	1.61	1.60	1.63	1.58	1.58				
80	0.11	0.19	0.31	0.45	0.62	0.83	1.08	1.29	1.28	1.27	1.26	1.22	1.22	1.28	1.22				
85	0.00	0.00	0.00	0.00	0.00	0.00	0.00	0.00	0.00	0.00	0.36	0.87	0.96	0.92	1.01				
90	0.00	0.00	0.00	0.00	0.00	0.00	0.00	0.00	0.00	0.00	0.00	0.00	0.00	0.00	0.00				

H(β) Range:-90 - 90DEG
H(β) Interval: 1.0DEG
Test Speed: HIGH
Temperature:25.3DEG
Operators:DAMIN
Test Date:2022-08-09

V(B) Range:-75 - 75DEG
V(B) Interval: 5.0DEG
Test System:EVERFINE GO-2000B_V1 SYSTEM V2.0.400
Humidity:65.0%
Test Distance:9.200m [K=1.0000]
Remarks: