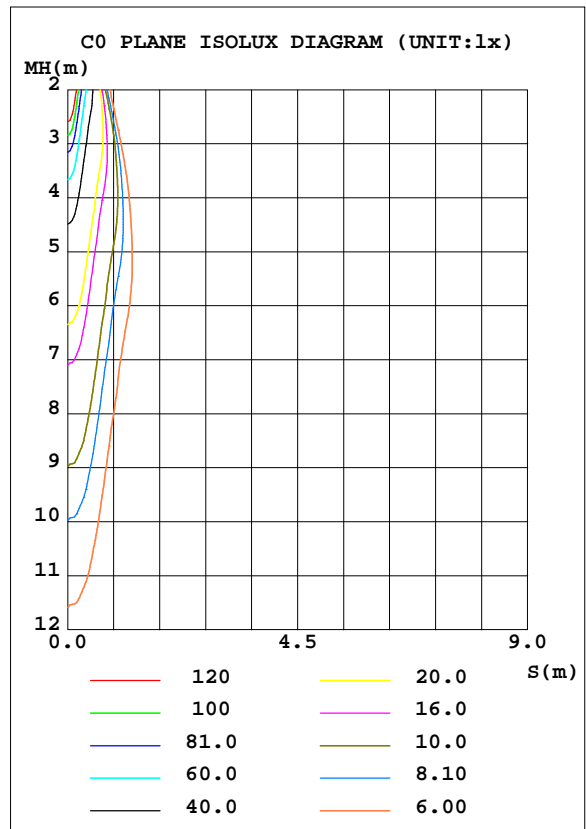
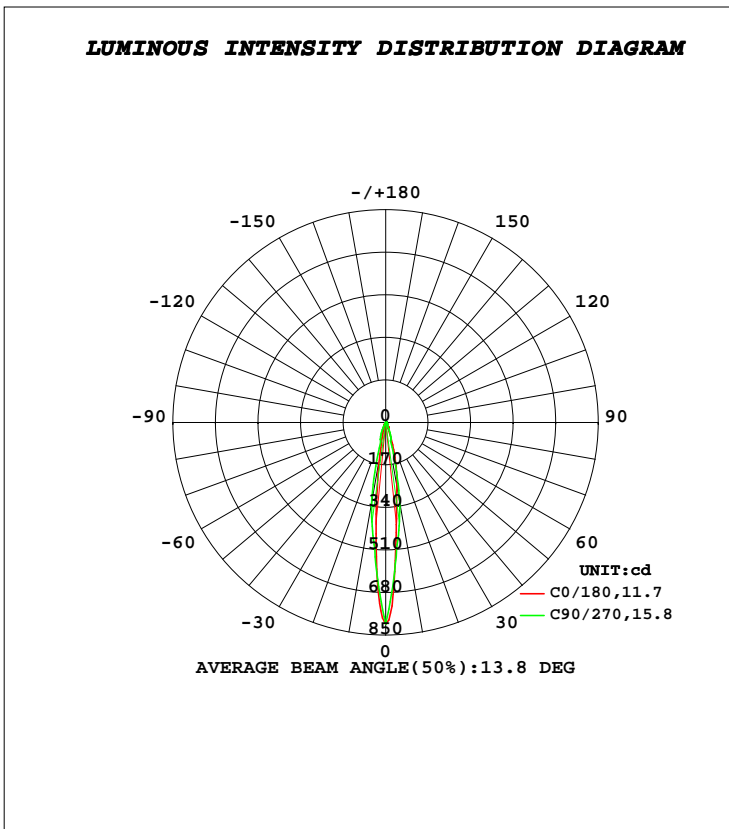


LUMINAIRE PHOTOMETRIC TEST REPORT

Test:U:24.000V I:0.1000A P:2.4000W PF:1.0000 Freq:0Hz Lamp Flux:84.1x1 lm		
NAME: VT-UDL003-35	TYPE:	WEIGHT:
SPEC.:	DIM.:	SERIAL No.:
MFR.: KAMS	SUR.:	Shielding Angle:

DATA OF LAMP		PHOTOMETRIC DATA Eff: 35.04 lm/W			
MODEL	VT-UDL003-35	I _{max} (cd)	805.6	S/MH(C0/180)	0.19
NOMINAL POWER(W)	3	LOR(%)	100.0	S/MH(C90/270)	0.27
RATED VOLTAGE(V)	24	TOTAL FLUX(lm)	84.100	η UP, DN(C0-180)	0.0,50.1
NOMINAL FLUX(lm)	84.1	CIE CLASS	DIRECT	η UP, DN(C180-360)	0.0,49.9
LAMPS INSIDE	1	η up(%)	0.0	CIBSE SHR NOM	0.00
TEST VOLTAGE(V)	24	η down(%)	100.0	CIBSE SHR MAX	1.00



H(β) Range:-90 - 90DEG
H(β) Interval: 1.0DEG
Test Speed: HIGH
Temperature:25.3DEG
Operators:DAMIN
Test Date:2020-01-15

V(B) Range:-75 - 75DEG
V(B) Interval: 5.0DEG
Test System:EVERFINE GO-2000B_V1 SYSTEM V2.0.400
Humidity:65.0%
Test Distance:9.120m [K=1.0000]
Remarks:

ZONAL FLUX DIAGRAM

ZONAL FLUX DIAGRAM:

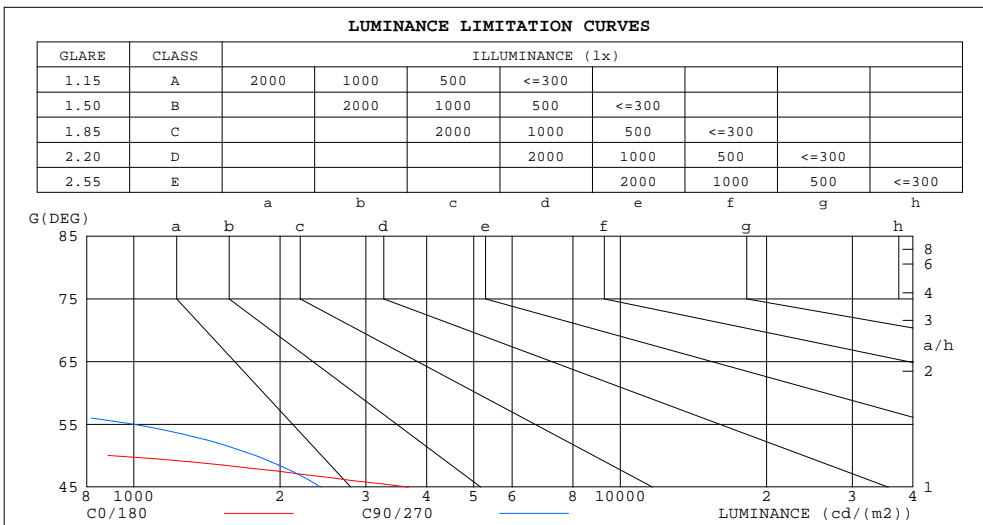
γ	C0	C45	C90	C135	C180	C225	C270	C315	γ	Φ zone	Φ total	%lum,lamp
10	259.1	271.2	325.7	132.8	142.8	136.2	327.8	272.8	0- 10	37.39	37.39	44.5,44.5
20	51.46	56.21	61.17	29.83	30.21	23.98	62.40	62.83	10- 20	28.55	65.94	78.4,78.4
30	17.04	14.88	12.07	10.65	8.811	12.45	9.406	16.50	20- 30	11.98	77.92	92.6,92.6
40	5.786	3.061	4.583	2.462	2.508	2.901	3.689	4.333	30- 40	4.749	82.67	98.3,98.3
50	0.2793	0.7086	0.5608	0.4797	0.3960	0.4069	0.5532	0.6015	40- 50	1.276	83.94	99.8,99.8
60	0	0.0559	0.0000	0.0072	0.0000	0	0.0000	0.0001	50- 60	0.1526	84.10	100,100
70	0	0	0	0	0	0	0	0	60- 70	0.0040	84.10	100,100
80	0	0	0	0	0	0	0	0	70- 80	0.0000	84.10	100,100
90	0	0	0	0	0	0	0	0	80- 90	0	84.10	100,100
100									90-100			
110									100-110			
120									110-120			
130									120-130			
140									130-140			
150									140-150			
160									150-160			
170									160-170			
180									170-180			
DEG	LUMINOUS INTENSITY:cd									UNIT:lm		

H(β) Range:-90 - 90DEG
H(β) Interval: 1.0DEG
Test Speed: HIGH
Temperature:25.3DEG
Operators:DAMIN
Test Date:2020-01-15

V(B) Range:-75 - 75DEG
V(B) Interval: 5.0DEG
Test System:EVERFINE GO-2000B_V1 SYSTEM V2.0.400
Humidity:65.0%
Test Distance:9.120m [K=1.0000]
Remarks:

LUMINANCE LIMITATION CURVES

Test:U:24.000V I:0.1000A P:2.4000W PF:1.0000 Freq:0Hz Lamp Flux:84.1x1 lm		
NAME: VT-UDL003-35	TYPE:	WEIGHT:
SPEC.:	DIM.:	SERIAL No.:
MFR.: KAMS	SUR.:	Shielding Angle:



LUMINANCE cd/(m2)		
G(DEG)	C0/180	C90/270
85	0	0
80	0	0
75	0	0
70	0	0
65	0	0
60	0	0
55	0	996
50	886	1778
45	3669	2425

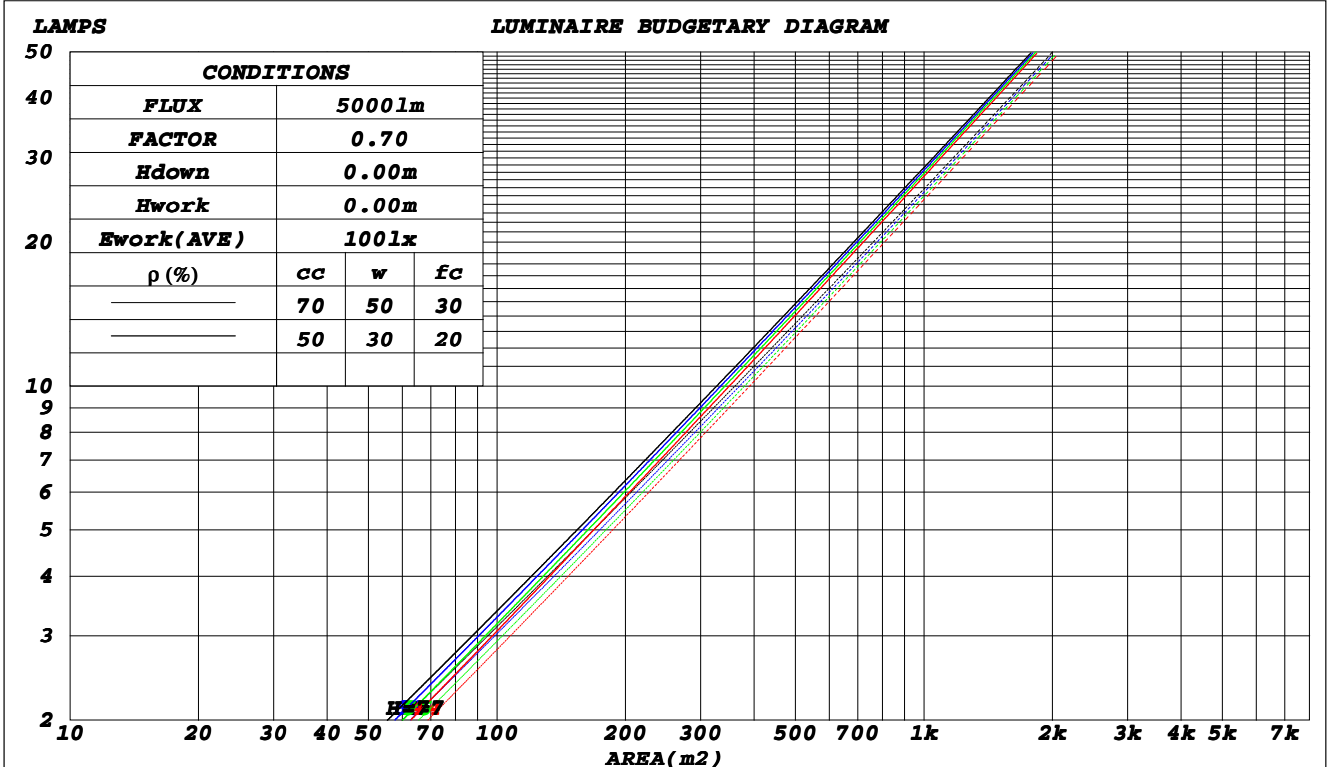
H(β) Range: -90 - 90DEG
H(β) Interval: 1.0DEG
Test Speed: HIGH
Temperature: 25.3DEG
Operators: DAMIN
Test Date: 2020-01-15

V(B) Range: -75 - 75DEG
V(B) Interval: 5.0DEG
Test System: EVERFINE GO-2000B_V1 SYSTEM V2.0.400
Humidity: 65.0%
Test Distance: 9.120m [K=1.0000]
Remarks:

CU AND LUMINAIRE BUDGETARY ESTIMATE DIAGRAM

Test:U:24.000V I:0.1000A P:2.4000W PF:1.0000 Freq:0Hz Lamp Flux:84.1x1 lm		
NAME: VT-UDL003-35	TYPE:	WEIGHT:
SPEC.:	DIM.:	SERIAL No.:
MFR.: KAMS	SUR.:	Shielding Angle:

ρ_{cc}	80%			70%			50%			30%			10%			0
ρ_w	50%	30%	10%	50%	30%	10%	50%	30%	10%	50%	30%	10%	50%	30%	10%	0
ρ_{fc}	20%			20%			20%			20%			20%			0
RCR	RCR:Room Cavity Ratio															
	Coefficients of Utilization(CU)															
0.0	1.19	1.19	1.19	1.16	1.16	1.16	1.11	1.11	1.11	1.06	1.06	1.06	1.02	1.02	1.02	1.00
1.0	1.13	1.11	1.10	1.11	1.09	1.08	1.07	1.06	1.05	1.03	1.02	1.01	.00	.99	.99	.97
2.0	1.08	1.05	1.03	1.06	1.04	1.02	1.03	1.01	.99	1.00	.99	.97	.98	.96	.95	.94
3.0	1.04	1.00	.97	1.02	.99	.97	.00	.97	.95	.98	.95	.94	.95	.94	.92	.91
4.0	.00	.96	.93	.99	.95	.92	.97	.94	.91	.95	.92	.90	.93	.91	.89	.88
5.0	.96	.92	.89	.95	.92	.89	.94	.91	.88	.92	.90	.88	.91	.89	.87	.86
6.0	.93	.89	.86	.93	.89	.86	.91	.88	.86	.90	.87	.85	.89	.86	.84	.83
7.0	.90	.86	.84	.90	.86	.83	.89	.85	.83	.88	.85	.83	.87	.84	.82	.81
8.0	.88	.84	.81	.87	.84	.81	.87	.83	.81	.86	.83	.80	.85	.82	.80	.79
9.0	.86	.82	.79	.85	.81	.79	.84	.81	.79	.84	.81	.79	.83	.80	.78	.77
10.0	.83	.80	.77	.83	.79	.77	.82	.79	.77	.82	.79	.77	.81	.78	.76	.76



H(β) Range:-90 - 90DEG
H(β) Interval: 1.0DEG
Test Speed: HIGH
Temperature:25.3DEG
Operators:DAMIN
Test Date:2020-01-15

V(B) Range:-75 - 75DEG
V(B) Interval: 5.0DEG
Test System:EVERFINE GO-2000B_V1 SYSTEM V2.0.400
Humidity:65.0%
Test Distance:9.120m [K=1.0000]
Remarks:

WEC AND CCEC

Test:U:24.000V I:0.1000A P:2.4000W PF:1.0000 Freq:0Hz Lamp Flux:84.1x1 lm		
NAME: VT-UDL003-35	TYPE:	WEIGHT:
SPEC.:	DIM.:	SERIAL No.:
MFR.: KAMS	SUR.:	Shielding Angle:

ρ_{cc}	80%			70%			50%			30%			10%			0
ρ_w	50%	30%	10%	50%	30%	10%	50%	30%	10%	50%	30%	10%	50%	30%	10%	0
ρ_{fc}	20%			20%			20%			20%			20%			0
RCR	RCR:Room Cavity Ratio						Wall Exitance Coefficients(WEC)									
0.0																
1.0	.133	.076	.024	.126	.072	.023	.114	.065	.021	.102	.059	.019	.092	.053	.017	
2.0	.123	.067	.021	.118	.065	.020	.107	.060	.019	.098	.055	.017	.089	.051	.016	
3.0	.115	.061	.018	.110	.059	.018	.102	.055	.017	.094	.051	.016	.086	.048	.015	
4.0	.107	.056	.016	.103	.054	.016	.096	.051	.015	.090	.048	.015	.084	.045	.014	
5.0	.101	.051	.015	.098	.050	.015	.092	.048	.014	.086	.045	.013	.081	.043	.013	
6.0	.095	.048	.014	.093	.047	.013	.087	.045	.013	.082	.043	.013	.078	.041	.012	
7.0	.090	.045	.013	.088	.044	.012	.083	.042	.012	.079	.041	.012	.075	.039	.011	
8.0	.086	.042	.012	.084	.041	.012	.080	.040	.011	.076	.039	.011	.073	.037	.011	
9.0	.082	.040	.011	.080	.039	.011	.077	.038	.011	.073	.037	.011	.070	.036	.010	
10.0	.078	.038	.010	.077	.037	.010	.074	.036	.010	.071	.035	.010	.068	.034	.010	

ρ_{cc}	80%			70%			50%			30%			10%			0
ρ_w	50%	30%	10%	50%	30%	10%	50%	30%	10%	50%	30%	10%	50%	30%	10%	0
ρ_{fc}	20%			20%			20%			20%			20%			0
RCR	RCR:Room Cavity Ratio						Ceiling Cavity Exitance Coefficients(CCEC)									
0.0	.190	.190	.190	.163	.163	.163	.111	.111	.111	.064	.064	.064	.020	.020	.020	
1.0	.168	.158	.148	.144	.135	.128	.098	.093	.088	.057	.054	.051	.018	.017	.017	
2.0	.150	.133	.118	.128	.114	.102	.088	.079	.071	.051	.046	.042	.016	.015	.014	
3.0	.135	.113	.096	.115	.098	.083	.079	.068	.059	.046	.040	.035	.015	.013	.011	
4.0	.122	.098	.079	.105	.085	.069	.072	.059	.049	.042	.035	.029	.013	.011	.009	
5.0	.111	.085	.066	.095	.074	.058	.066	.052	.041	.038	.030	.024	.012	.010	.008	
6.0	.102	.075	.056	.088	.065	.049	.061	.046	.035	.035	.027	.021	.011	.009	.007	
7.0	.094	.067	.048	.081	.058	.042	.056	.041	.030	.033	.024	.018	.011	.008	.006	
8.0	.088	.060	.041	.076	.052	.036	.052	.037	.026	.030	.022	.015	.010	.007	.005	
9.0	.082	.055	.036	.071	.047	.031	.049	.033	.022	.029	.020	.013	.009	.006	.004	
10.0	.077	.050	.032	.066	.043	.028	.046	.030	.020	.027	.018	.012	.009	.006	.004	

H(β) Range:-90 - 90DEG
H(β) Interval: 1.0DEG
Test Speed: HIGH
Temperature:25.3DEG
Operators:DAMIN
Test Date:2020-01-15

V(B) Range:-75 - 75DEG
V(B) Interval: 5.0DEG
Test System:EVERFINE GO-2000B_V1 SYSTEM V2.0.400
Humidity:65.0%
Test Distance:9.120m [K=1.0000]
Remarks:

UGR(Unified Glare Rating) Table

Test:U:24.000V I:0.1000A P:2.4000W PF:1.0000 Freq:0Hz Lamp Flux:84.1x1 lm										
NAME: VT-UDL003-35					TYPE:			WEIGHT:		
SPEC.:					DIM.:			SERIAL No.:		
MFR.: KAMS					SUR.:			Shielding Angle:		
ceiling/cavity	0.7	0.7	0.5	0.5	0.3	0.7	0.7	0.5	0.5	0.3
walls	0.5	0.3	0.5	0.3	0.3	0.5	0.3	0.5	0.3	0.3
working plane	0.2	0.2	0.2	0.2	0.2	0.2	0.2	0.2	0.2	0.2
Room dimensions	Viewed crosswise					Viewed endwise				
x = 2H y = 2H	19.7	20.3	19.9	20.5	20.6	20.0	20.6	20.2	20.8	20.9
3H	19.6	20.2	19.8	20.3	20.5	19.8	20.4	20.1	20.6	20.8
4H	19.5	20.0	19.7	20.3	20.5	19.8	20.3	20.0	20.5	20.7
6H	19.4	19.9	19.7	20.2	20.4	19.7	20.2	20.0	20.4	20.7
8H	19.4	19.9	19.7	20.1	20.4	19.6	20.2	19.9	20.4	20.6
12H	19.3	19.8	19.6	20.1	20.3	19.6	20.1	19.9	20.3	20.6
4H 2H	19.5	20.1	19.8	20.3	20.5	19.8	20.3	20.0	20.5	20.7
3H	19.3	19.8	19.6	20.1	20.3	19.6	20.1	19.9	20.3	20.6
4H	19.2	19.7	19.6	20.0	20.3	19.5	20.0	19.8	20.2	20.5
6H	19.1	19.5	19.5	19.9	20.2	19.4	19.8	19.8	20.1	20.5
8H	19.1	19.4	19.5	19.8	20.2	19.3	19.7	19.7	20.1	20.4
12H	19.0	19.4	19.4	19.7	20.1	19.3	19.6	19.7	20.0	20.4
8H 4H	19.1	19.4	19.5	19.8	20.2	19.3	19.7	19.7	20.1	20.4
6H	19.0	19.3	19.4	19.7	20.1	19.2	19.5	19.7	19.9	20.3
8H	18.9	19.2	19.3	19.6	20.0	19.2	19.4	19.6	19.9	20.3
12H	18.8	19.1	19.3	19.5	20.0	19.1	19.3	19.6	19.8	20.2
12H 4H	19.0	19.4	19.4	19.7	20.1	19.3	19.6	19.7	20.0	20.4
6H	18.9	19.2	19.3	19.6	20.0	19.2	19.4	19.6	19.9	20.3
8H	18.8	19.1	19.3	19.5	20.0	19.1	19.3	19.6	19.8	20.2
Variations with the observer position at spacings:										
S = 1.0H	+ 3.7 / -29.3					+ 3.1 / -14.8				
1.5H	+ 6.1 / -16.6					+ 4.7 / - 8.9				
2.0H	+ 7.0 / - 1.5					+ 4.9 / - 1.5				

CIE Pub.117, 84.10 lm Total Lamp Luminous Flux Correct (8log(F/F0) = -8.6)

H(β) Range:-90 - 90DEG
H(β) Interval: 1.0DEG
Test Speed: HIGH
Temperature:25.3DEG
Operators:DAMIN
Test Date:2020-01-15

V(B) Range:-75 - 75DEG
V(B) Interval: 5.0DEG
Test System:EVERFINE GO-2000B_V1 SYSTEM V2.0.400
Humidity:65.0%
Test Distance:9.120m [K=1.0000]
Remarks:

UTILIZATION FACTORS TABLE

Test:U:24.000V I:0.1000A P:2.4000W PF:1.0000 Freq:0Hz Lamp Flux:84.1x1 lm		
NAME: VT-UDL003-35	TYPE:	WEIGHT:
SPEC.:	DIM.:	SERIAL No.:
MFR.: KAMS	SUR.:	Shielding Angle:

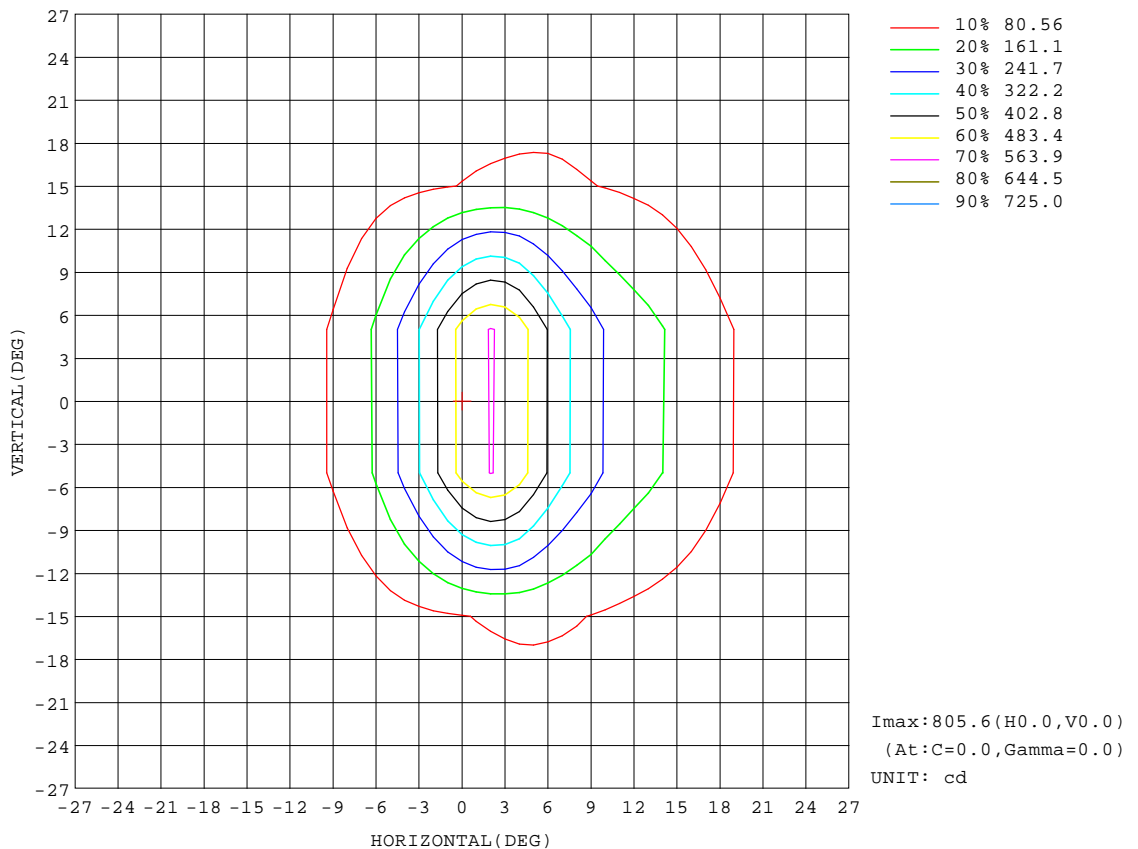
REFLECTANCE										
Ceiling	0.8	0.8	0.8	0.7	0.7	0.7	0.5	0.5	0.5	0
Walls	0.7	0.5	0.3	0.7	0.5	0.3	0.7	0.5	0.3	0
Working plane	0.2	0.2	0.2	0.2	0.2	0.2	0.2	0.2	0.2	0
ROOM INDEX	UTILIZATION FACTORS(PERCENT) $k(RI) \times RCR = 5$									
k = 0.60	91	85	81	90	85	81	89	84	81	78
0.80	98	92	89	97	92	89	96	91	88	85
1.00	101	96	93	101	96	93	99	96	92	89
1.25	105	100	97	104	100	97	102	99	96	92
1.50	107	103	100	106	102	100	104	101	99	94
2.00	110	106	103	108	105	102	106	103	101	96
2.50	111	108	105	110	107	104	107	104	102	97
3.00	113	109	107	111	108	106	108	105	104	97
4.00	114	112	110	112	110	109	109	107	106	99
5.00	116	114	112	114	112	110	110	108	107	100
ROOM INDEX	UF(total)									Direct
According to DIN EN 13032-2 2004			Suspended				SHRNOM = 1.25			

H(β) Range:-90 - 90DEG
H(β) Interval: 1.0DEG
Test Speed: HIGH
Temperature:25.3DEG
Operators:DAMIN
Test Date:2020-01-15

V(B) Range:-75 - 75DEG
V(B) Interval: 5.0DEG
Test System:EVERFINE GO-2000B_V1 SYSTEM V2.0.400
Humidity:65.0%
Test Distance:9.120m [K=1.0000]
Remarks:

ISOCANDELA DIAGRAM

Test:U:24.000V I:0.1000A P:2.4000W PF:1.0000 Freq:0Hz Lamp Flux:84.1x1 lm		
NAME: VT-UDL003-35	TYPE:	WEIGHT:
SPEC.:	DIM.:	SERIAL No.:
MFR.: KAMS	SUR.:	Shielding Angle:



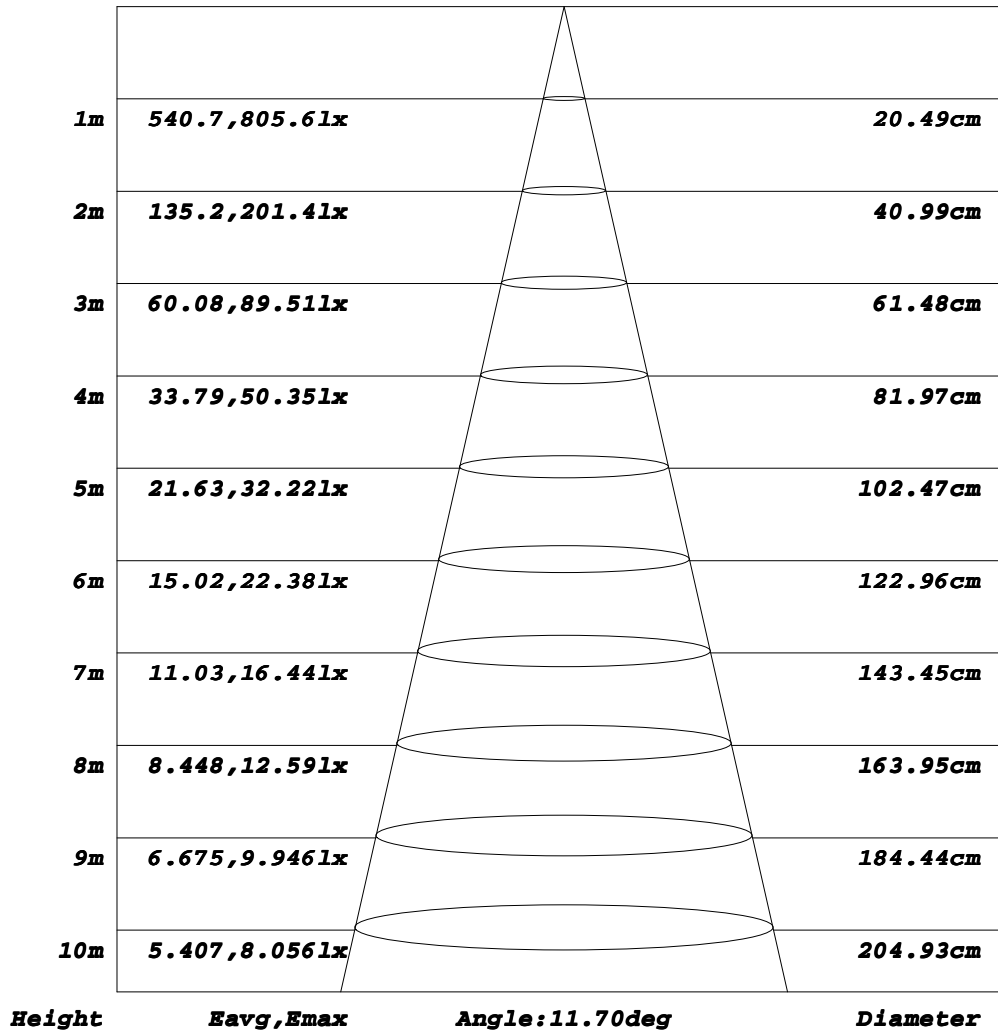
H(β) Range: -90 - 90DEG
H(β) Interval: 1.0DEG
Test Speed: HIGH
Temperature: 25.3DEG
Operators: DAMIN
Test Date: 2020-01-15

V(B) Range: -75 - 75DEG
V(B) Interval: 5.0DEG
Test System: EVERFINE GO-2000B_V1 SYSTEM V2.0.400
Humidity: 65.0%
Test Distance: 9.120m [K=1.0000]
Remarks:

AAI Figure

Test:U:24.000V I:0.1000A P:2.4000W PF:1.0000 Freq:0Hz Lamp Flux:84.1x1 lm		
NAME: VT-UDL003-35	TYPE:	WEIGHT:
SPEC.:	DIM.:	SERIAL No.:
MFR.: KAMS	SUR.:	Shielding Angle:

Flux out:18.76 lm



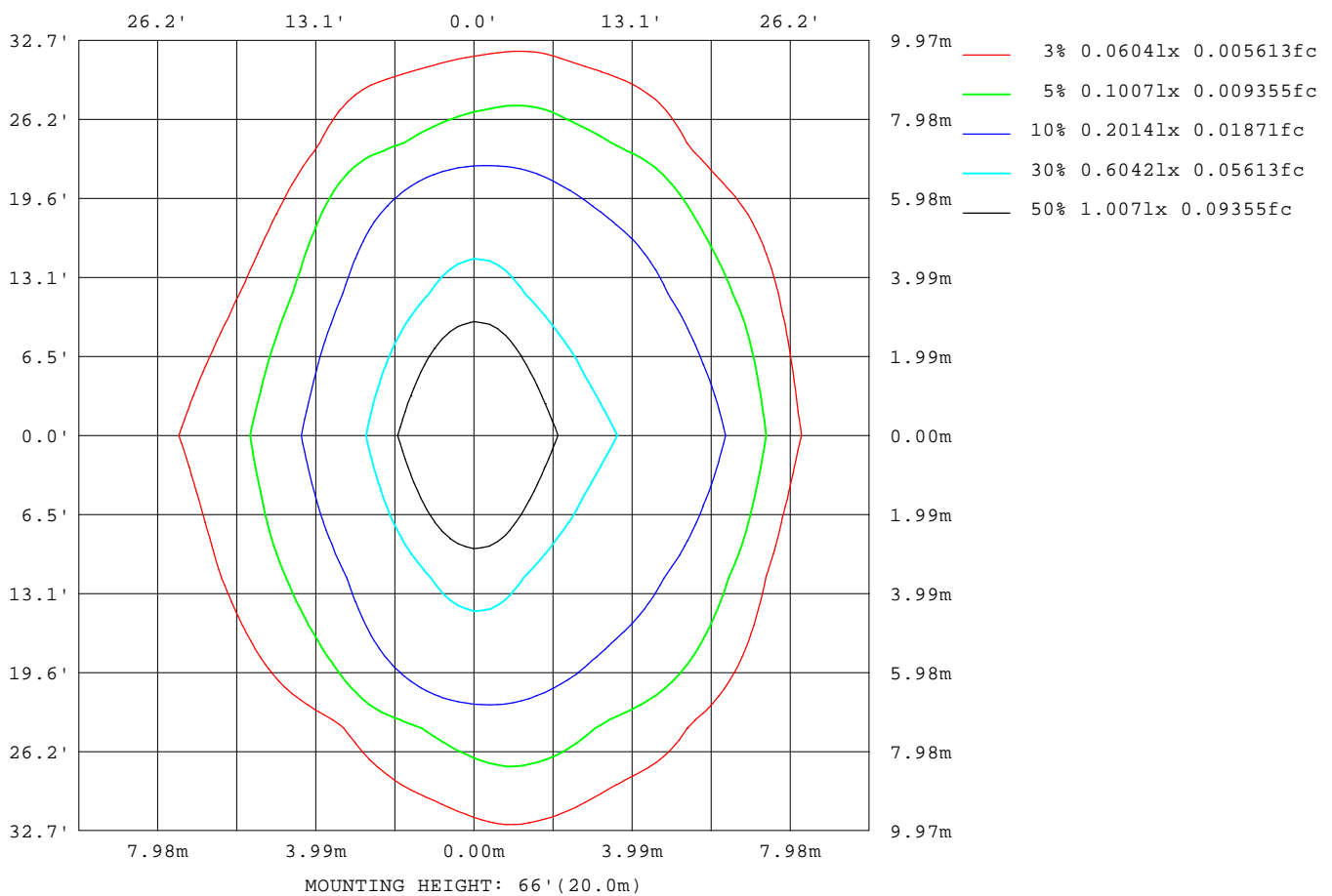
Note: The Curves indicate the illuminated area and the average illumination when the luminaire is at different distance.

H(β) Range: -90 - 90DEG
 H(β) Interval: 1.0DEG
 Test Speed: HIGH
 Temperature: 25.3DEG
 Operators: DAMIN
 Test Date: 2020-01-15

V(B) Range: -75 - 75DEG
 V(B) Interval: 5.0DEG
 Test System: EVERFINE GO-2000B_V1 SYSTEM V2.0.400
 Humidity: 65.0%
 Test Distance: 9.120m [K=1.0000]
 Remarks:

ISOLUX DIAGRAM

Test:U:24.000V I:0.1000A P:2.4000W PF:1.0000 Freq:0Hz Lamp Flux:84.1x1 lm		
NAME: VT-UDL003-35	TYPE:	WEIGHT:
SPEC.:	DIM.:	SERIAL No.:
MFR.: KAMS	SUR.:	Shielding Angle:



H(β) Range:-90 - 90DEG
H(β) Interval: 1.0DEG
Test Speed: HIGH
Temperature:25.3DEG
Operators:DAMIN
Test Date:2020-01-15

V(B) Range:-75 - 75DEG
V(B) Interval: 5.0DEG
Test System:EVERFINE GO-2000B_V1 SYSTEM V2.0.400
Humidity:65.0%
Test Distance:9.120m [K=1.0000]
Remarks:

LED Avg.L Report

Test:U:24.000V I:0.1000A P:2.4000W PF:1.0000 Freq:0Hz Lamp Flux:84.1x1 lm		
NAME: VT-UDL003-35	TYPE:	WEIGHT:
SPEC.:	DIM.:	SERIAL No.:
MFR.: KAMS	SUR.:	Shielding Angle:

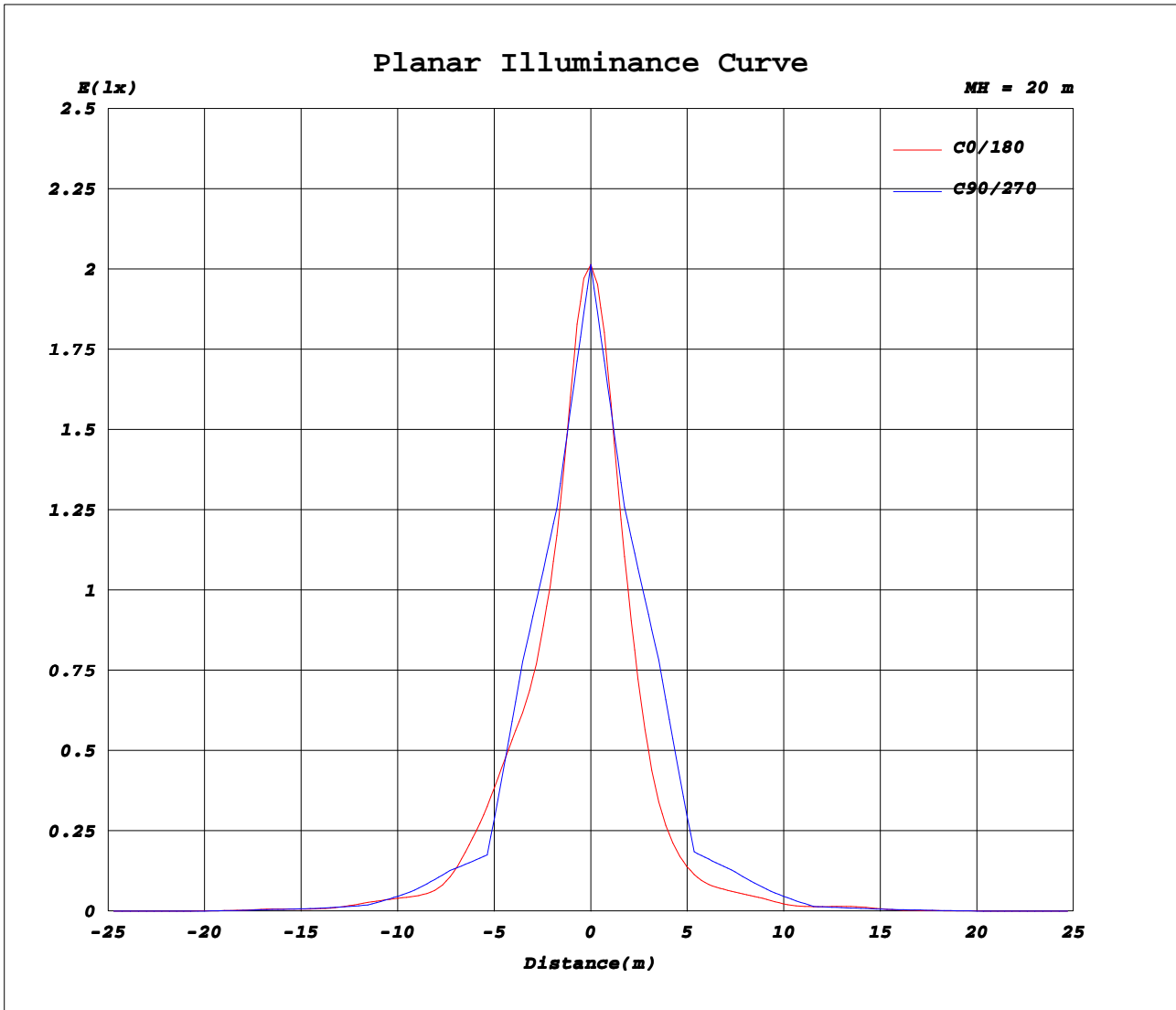
AvgL	cd/m2
L_0~180(65)av	0
L_0~180(75)av	0
L_0~180(85)av	0
L_90~270(65)av	0
L_90~270(75)av	0
L_90~270(85)av	0
L_45(65)av	22
L_45(75)av	0
L_45(85)av	0

Standard: GB/T 29293-2012

H(β) Range:-90 - 90DEG
H(β) Interval: 1.0DEG
Test Speed: HIGH
Temperature:25.3DEG
Operators:DAMIN
Test Date:2020-01-15

V(B) Range:-75 - 75DEG
V(B) Interval: 5.0DEG
Test System:EVERFINE GO-2000B_V1 SYSTEM V2.0.400
Humidity:65.0%
Test Distance:9.120m [K=1.0000]
Remarks:

Planar Illuminance Curve



H(β) Range: -90 - 90DEG
H(β) Interval: 1.0DEG
Test Speed: HIGH
Temperature: 25.3DEG
Operators: DAMIN
Test Date: 2020-01-15

V(B) Range: -75 - 75DEG
V(B) Interval: 5.0DEG
Test System: EVERFINE GO-2000B_V1 SYSTEM V2.0.400
Humidity: 65.0%
Test Distance: 9.120m [K=1.0000]
Remarks:

LUMINOUS DISTRIBUTION INTENSITY DATA

Test:U:24.000V I:0.1000A P:2.4000W PF:1.0000 Freq:0Hz Lamp Flux:84.1x1 lm		
NAME: VT-UDL003-35	TYPE:	WEIGHT:
SPEC.:	DIM.:	SERIAL No.:
MFR.: KAMS	SUR.:	Shielding Angle:

Table--1

UNIT: cd

C (DEG) \ γ (DEG)	0	5	10	15	20	25	30	35	40	45	50	55	60	65	70	75	80	85	90
0	806	806	806	806	806	806	806	806	806	806	806	806	806	806	806	806	806	806	806
5	474	474	477	483	491	501	513	527	540	553	565	575	578	579	572	561	547	526	508
10	259	256	255	257	262	270	280	274	272	271	273	276	281	288	295	306	317	324	326
15	145	146	149	154	156	145	135	126	117	115	115	116	117	116	112	106	96.1	85.9	78.0
20	51.5	57.7	66.1	72.3	64.6	56.8	51.2	53.8	55.7	56.2	56.5	58.1	59.9	61.9	64.0	65.7	66.1	64.8	61.2
25	24.2	24.1	24.9	23.1	20.5	19.7	21.9	24.6	25.8	27.4	28.7	31.7	34.0	36.0	38.9	41.2	41.0	37.3	32.5
30	17.0	17.3	17.0	14.9	13.1	12.7	12.4	11.8	11.7	14.9	19.1	22.2	21.9	19.6	16.2	14.3	14.0	14.1	12.1
35	5.98	8.50	9.36	8.87	11.0	9.98	8.37	7.11	7.48	7.94	8.79	10.7	12.9	11.6	8.16	7.64	9.19	9.09	6.72
40	5.79	5.09	4.06	4.31	5.99	4.85	5.60	4.63	3.28	3.06	4.10	6.72	8.50	7.84	5.86	4.37	4.51	5.14	4.58
45	1.27	2.19	1.36	1.75	1.49	1.70	2.17	1.33	1.47	1.88	2.09	2.26	2.81	3.30	2.55	1.56	1.14	0.94	0.84
50	0.28	0.56	0.53	0.70	0.63	0.70	0.57	0.77	0.76	0.71	0.71	0.77	0.90	0.89	0.78	0.69	0.64	0.58	0.56
55	0.00	0.03	0.10	0.06	0.16	0.07	0.27	0.24	0.22	0.27	0.29	0.28	0.40	0.52	0.46	0.37	0.33	0.29	0.28
60	0.00	0.00	0.00	0.00	0.00	0.00	0.02	0.03	0.04	0.06	0.14	0.13	0.17	0.17	0.11	0.05	0.02	0.01	0.00
65	0.00	0.00	0.00	0.00	0.00	0.00	0.00	0.02	0.01	0.02	0.02	0.00	0.00	0.00	0.00	0.00	0.00	0.00	0.00
70	0.00	0.00	0.00	0.00	0.00	0.00	0.00	0.00	0.00	0.00	0.00	0.00	0.00	0.00	0.00	0.00	0.00	0.00	0.00
75	0.00	0.00	0.00	0.00	0.00	0.00	0.00	0.00	0.00	0.00	0.00	0.00	0.00	0.00	0.00	0.00	0.00	0.00	0.00
80	0.00	0.00	0.00	0.00	0.00	0.00	0.00	0.00	0.00	0.00	0.00	0.00	0.00	0.00	0.00	0.00	0.00	0.00	0.00
85	0.00	0.00	0.00	0.00	0.00	0.00	0.00	0.00	0.00	0.00	0.00	0.00	0.00	0.00	0.00	0.00	0.00	0.00	0.00
90	0.00	0.00	0.00	0.00	0.00	0.00	0.00	0.00	0.00	0.00	0.00	0.00	0.00	0.00	0.00	0.00	0.00	0.00	0.00

H(β) Range:-90 - 90DEG
H(β) Interval: 1.0DEG
Test Speed: HIGH
Temperature:25.3DEG
Operators:DAMIN
Test Date:2020-01-15

V(B) Range:-75 - 75DEG
V(B) Interval: 5.0DEG
Test System:EVERFINE GO-2000B_V1 SYSTEM V2.0.400
Humidity:65.0%
Test Distance:9.120m [K=1.0000]
Remarks:

LUMINOUS DISTRIBUTION INTENSITY DATA

Test:U:24.000V I:0.1000A P:2.4000W PF:1.0000 Freq:0Hz Lamp Flux:84.1x1 lm		
NAME: VT-UDL003-35	TYPE:	WEIGHT:
SPEC.:	DIM.:	SERIAL No.:
MFR.: KAMS	SUR.:	Shielding Angle:

Table--2

UNIT: cd

C (DEG) \ γ (DEG)	95	100	105	110	115	120	125	130	135	140	145	150	155	160	165	170	175	180	185
0	806	806	806	806	806	806	806	806	806	806	806	806	806	806	806	806	806	806	806
5	483	461	440	421	406	394	385	379	376	374	374	378	383	390	400	413	428	447	429
10	318	302	279	252	224	198	174	152	133	117	104	94.4	100	108	115	123	132	143	132
15	74.5	74.5	75.2	75.0	73.6	71.2	68.1	64.7	61.5	57.6	51.0	45.7	41.6	38.2	40.5	43.6	46.9	50.9	46.5
20	56.4	51.1	45.5	39.2	33.8	31.2	30.5	29.8	29.8	29.8	29.4	29.2	27.3	25.2	23.5	24.8	27.3	30.2	27.5
25	29.0	26.2	23.7	22.0	21.0	21.0	21.5	21.6	19.7	16.4	13.2	14.4	15.5	15.3	13.9	13.2	15.4	17.9	15.1
30	9.71	9.92	10.7	11.5	11.1	11.3	11.7	11.3	10.7	9.90	9.98	11.6	11.8	11.2	10.3	9.00	8.77	8.81	8.34
35	6.21	6.46	6.74	6.02	5.60	6.04	6.72	6.03	5.52	6.13	7.31	7.55	4.98	4.55	6.14	5.63	6.33	9.70	6.31
40	3.62	3.69	3.93	3.40	3.60	3.82	3.26	2.85	2.46	2.44	2.02	2.16	2.09	1.55	1.88	1.89	1.73	2.51	1.74
45	0.82	0.89	1.10	1.18	1.53	1.89	1.65	1.25	0.96	0.91	0.86	0.67	0.71	0.72	0.53	0.80	0.63	1.09	0.65
50	0.54	0.47	0.40	0.33	0.27	0.27	0.39	0.48	0.48	0.33	0.22	0.22	0.17	0.20	0.13	0.18	0.16	0.40	0.16
55	0.25	0.22	0.20	0.17	0.16	0.17	0.18	0.09	0.02	0.07	0.07	0.04	0.03	0.00	0.00	0.01	0.03	0.09	0.03
60	0.00	0.01	0.03	0.04	0.05	0.07	0.05	0.03	0.01	0.00	0.00	0.01	0.00	0.00	0.00	0.00	0.00	0.00	0.00
65	0.00	0.00	0.00	0.00	0.00	0.00	0.00	0.00	0.00	0.00	0.00	0.00	0.00	0.00	0.00	0.00	0.00	0.00	0.00
70	0.00	0.00	0.00	0.00	0.00	0.00	0.00	0.00	0.00	0.00	0.00	0.00	0.00	0.00	0.00	0.00	0.00	0.00	0.00
75	0.00	0.00	0.00	0.00	0.00	0.00	0.00	0.00	0.00	0.00	0.00	0.00	0.00	0.00	0.00	0.00	0.00	0.00	0.00
80	0.00	0.00	0.00	0.00	0.00	0.00	0.00	0.00	0.00	0.00	0.00	0.00	0.00	0.00	0.00	0.00	0.00	0.00	0.00
85	0.00	0.00	0.00	0.00	0.00	0.00	0.00	0.00	0.00	0.00	0.00	0.00	0.00	0.00	0.00	0.00	0.00	0.00	0.00
90	0.00	0.00	0.00	0.00	0.00	0.00	0.00	0.00	0.00	0.00	0.00	0.00	0.00	0.00	0.00	0.00	0.00	0.00	0.00

H(β) Range:-90 - 90DEG
H(β) Interval: 1.0DEG
Test Speed: HIGH
Temperature:25.3DEG
Operators:DAMIN
Test Date:2020-01-15

V(B) Range:-75 - 75DEG
V(B) Interval: 5.0DEG
Test System:EVERFINE GO-2000B_V1 SYSTEM V2.0.400
Humidity:65.0%
Test Distance:9.120m [K=1.0000]
Remarks:

LUMINOUS DISTRIBUTION INTENSITY DATA

Test:U:24.000V I:0.1000A P:2.4000W PF:1.0000 Freq:0Hz Lamp Flux:84.1x1 lm		
NAME: VT-UDL003-35	TYPE:	WEIGHT:
SPEC.:	DIM.:	SERIAL No.:
MFR.: KAMS	SUR.:	Shielding Angle:

Table--3

UNIT: cd

C (DEG) γ (DEG)	190	195	200	205	210	215	220	225	230	235	240	245	250	255	260	265	270	275	280
0	806	806	806	806	806	806	806	806	806	806	806	806	806	806	806	806	806	806	806
5	413	401	391	384	379	376	375	377	381	387	396	408	423	441	463	485	509	528	548
10	123	115	108	101	95.3	106	120	136	156	178	201	228	255	282	305	320	328	326	318
15	42.7	39.0	36.1	39.0	43.0	48.9	57.3	62.6	67.1	72.2	77.0	80.4	81.8	81.3	80.0	79.3	82.2	89.3	98.8
20	25.1	23.6	24.4	25.3	26.0	25.5	25.1	24.0	24.0	27.2	32.7	39.6	45.6	50.5	54.8	58.8	62.4	65.2	67.2
25	12.6	14.1	16.1	16.5	15.6	14.5	16.2	17.0	17.5	18.3	20.1	23.3	26.7	29.5	30.6	31.5	33.6	36.5	39.6
30	7.84	7.98	8.36	8.21	9.09	10.9	12.0	12.4	12.3	11.1	10.5	12.4	15.0	15.3	12.0	9.72	9.41	10.7	11.9
35	5.46	5.59	3.90	3.70	4.87	5.27	5.12	6.97	9.01	7.76	6.10	6.60	8.38	9.78	9.55	7.37	6.43	6.81	7.30
40	1.89	1.88	1.54	1.94	1.88	1.75	2.13	2.90	4.56	5.60	5.14	3.67	4.35	5.63	5.09	3.80	3.69	4.03	3.80
45	0.84	0.58	0.75	0.71	0.68	0.83	0.88	0.89	1.24	2.66	2.49	1.51	1.44	1.41	1.10	0.90	0.83	0.88	0.99
50	0.18	0.12	0.19	0.13	0.23	0.24	0.31	0.41	0.36	0.28	0.11	0.23	0.35	0.45	0.54	0.56	0.55	0.53	0.51
55	0.01	0.00	0.00	0.00	0.00	0.07	0.08	0.00	0.01	0.06	0.07	0.12	0.18	0.22	0.25	0.28	0.28	0.27	0.27
60	0.00	0.00	0.00	0.00	0.00	0.00	0.00	0.00	0.00	0.01	0.02	0.02	0.03	0.03	0.02	0.01	0.00	0.01	0.02
65	0.00	0.00	0.00	0.00	0.00	0.00	0.00	0.00	0.00	0.00	0.00	0.00	0.00	0.00	0.00	0.00	0.00	0.00	0.00
70	0.00	0.00	0.00	0.00	0.00	0.00	0.00	0.00	0.00	0.00	0.00	0.00	0.00	0.00	0.00	0.00	0.00	0.00	0.00
75	0.00	0.00	0.00	0.00	0.00	0.00	0.00	0.00	0.00	0.00	0.00	0.00	0.00	0.00	0.00	0.00	0.00	0.00	0.00
80	0.00	0.00	0.00	0.00	0.00	0.00	0.00	0.00	0.00	0.00	0.00	0.00	0.00	0.00	0.00	0.00	0.00	0.00	0.00
85	0.00	0.00	0.00	0.00	0.00	0.00	0.00	0.00	0.00	0.00	0.00	0.00	0.00	0.00	0.00	0.00	0.00	0.00	0.00
90	0.00	0.00	0.00	0.00	0.00	0.00	0.00	0.00	0.00	0.00	0.00	0.00	0.00	0.00	0.00	0.00	0.00	0.00	0.00

H(β) Range:-90 - 90DEG
H(β) Interval: 1.0DEG
Test Speed: HIGH
Temperature:25.3DEG
Operators:DAMIN
Test Date:2020-01-15

V(B) Range:-75 - 75DEG
V(B) Interval: 5.0DEG
Test System:EVERFINE GO-2000B_V1 SYSTEM V2.0.400
Humidity:65.0%
Test Distance:9.120m [K=1.0000]
Remarks:

LUMINOUS DISTRIBUTION INTENSITY DATA

Test:U:24.000V I:0.1000A P:2.4000W PF:1.0000 Freq:0Hz Lamp Flux:84.1x1 lm		
NAME: VT-UDL003-35	TYPE:	WEIGHT:
SPEC.:	DIM.:	SERIAL No.:
MFR.: KAMS	SUR.:	Shielding Angle:

Table--4

UNIT: cd

C (DEG) \ γ (DEG)	285	290	295	300	305	310	315	320	325	330	335	340	345	350	355				
0	806	806	806	806	806	806	806	806	806	806	806	806	806	806	806				
5	562	573	580	578	575	566	554	541	527	513	501	491	483	477	474				
10	307	297	290	283	278	275	273	273	275	281	271	263	258	256	256				
15	108	115	119	120	119	119	120	122	130	139	148	159	156	151	147				
20	67.3	66.0	65.1	64.5	64.0	63.3	62.8	59.4	55.4	52.8	58.8	66.3	73.3	66.9	58.1				
25	40.9	39.8	38.7	36.8	31.9	27.6	27.7	27.7	28.7	27.3	24.6	24.0	25.7	26.9	25.1				
30	13.4	16.2	18.5	19.5	18.4	16.5	16.5	16.3	16.6	17.0	15.2	13.0	14.0	16.7	17.2				
35	6.72	7.25	7.21	6.60	6.57	8.93	10.6	10.4	7.51	6.74	7.56	8.10	7.48	8.42	7.94				
40	4.01	4.39	4.40	4.34	4.59	5.51	4.33	3.94	4.18	4.59	4.15	5.13	4.00	3.93	5.02				
45	1.26	1.50	1.70	2.13	2.83	2.94	2.44	1.67	1.22	1.87	1.46	1.17	1.42	1.08	2.06				
50	0.47	0.45	0.45	0.48	0.65	0.66	0.60	0.67	0.58	0.30	0.39	0.30	0.37	0.31	0.45				
55	0.26	0.25	0.27	0.26	0.14	0.09	0.04	0.10	0.11	0.08	0.00	0.07	0.01	0.02	0.02				
60	0.04	0.06	0.09	0.11	0.07	0.02	0.00	0.00	0.00	0.00	0.00	0.00	0.00	0.00	0.00				
65	0.00	0.00	0.00	0.00	0.00	0.00	0.00	0.00	0.00	0.00	0.00	0.00	0.00	0.00	0.00				
70	0.00	0.00	0.00	0.00	0.00	0.00	0.00	0.00	0.00	0.00	0.00	0.00	0.00	0.00	0.00				
75	0.00	0.00	0.00	0.00	0.00	0.00	0.00	0.00	0.00	0.00	0.00	0.00	0.00	0.00	0.00				
80	0.00	0.00	0.00	0.00	0.00	0.00	0.00	0.00	0.00	0.00	0.00	0.00	0.00	0.00	0.00				
85	0.00	0.00	0.00	0.00	0.00	0.00	0.00	0.00	0.00	0.00	0.00	0.00	0.00	0.00	0.00				
90	0.00	0.00	0.00	0.00	0.00	0.00	0.00	0.00	0.00	0.00	0.00	0.00	0.00	0.00	0.00				

H(β) Range:-90 - 90DEG
H(β) Interval: 1.0DEG
Test Speed: HIGH
Temperature:25.3DEG
Operators:DAMIN
Test Date:2020-01-15

V(B) Range:-75 - 75DEG
V(B) Interval: 5.0DEG
Test System:EVERFINE GO-2000B_V1 SYSTEM V2.0.400
Humidity:65.0%
Test Distance:9.120m [K=1.0000]
Remarks: