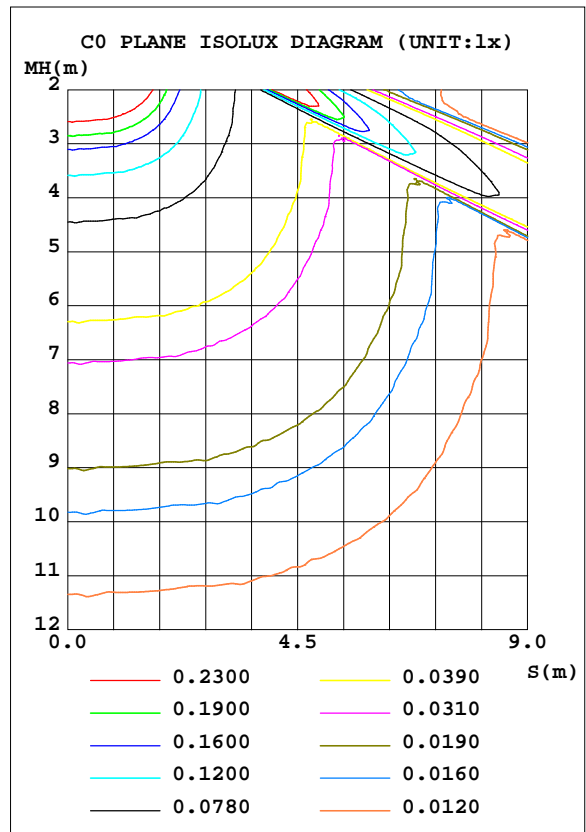
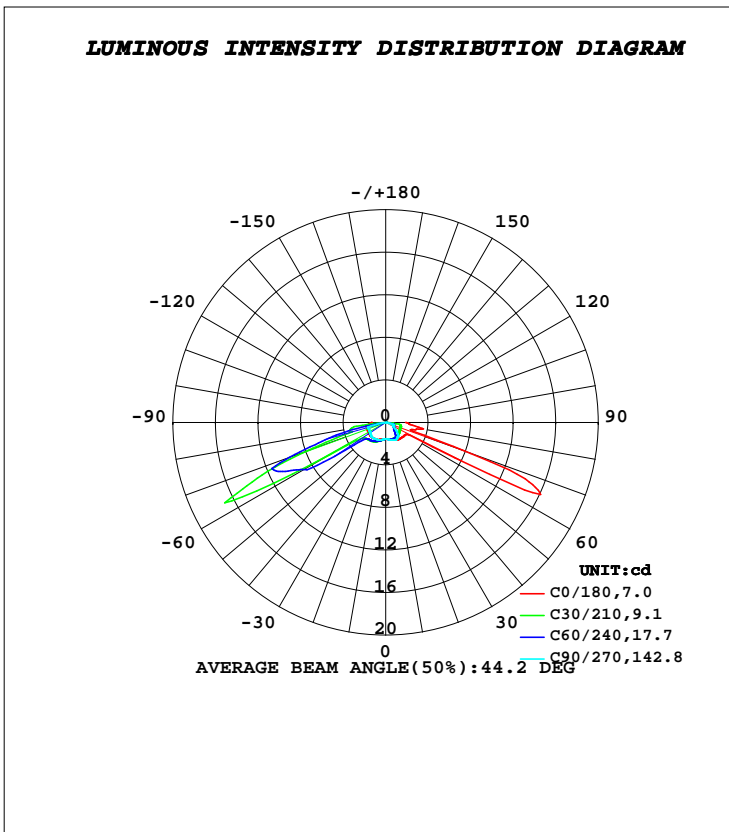


LUMINAIRE PHOTOMETRIC TEST REPORT

Test:U:24.000V I:0.0460A P:1.0000W PF:1.0000 Freq:50.00Hz Lamp Flux:15.5948x1 lm		
NAME: KS-TMDM-Q3W	TYPE:	WEIGHT:
SPEC.:	DIM.:	SERIAL No.:KS-TMDM-Q3W
MFR.: KAMS	SUR.:	Shielding Angle:

DATA OF LAMP		PHOTOMETRIC DATA			
MODEL	KS-TMDM-Q3W	Imax(cd)	18.83	S/MH(C0/180)	1.85
NOMINAL POWER(W)	1	LOR(%)	100.0	S/MH(C90/270)	1.83
RATED VOLTAGE(V)	24	TOTAL FLUX(lm)	15.595	η UP, DN(C0-180)	0.0,41.6
NOMINAL FLUX(lm)	15.5948	CIE CLASS	DIRECT	η UP, DN(C180-360)	0.0,58.4
LAMPS INSIDE	1	η up(%)	0.0	CIBSE SHR NOM	1.00
TEST VOLTAGE(V)	24	η down(%)	100.0	CIBSE SHR MAX	1.15



H(β) Range:-90 - 90DEG
H(β) Interval: 1.0DEG
Test Speed: HIGH
Temperature:25.3DEG
Operators:DAMIN
Test Date:2022-08-09

V(B) Range:-75 - 75DEG
V(B) Interval: 5.0DEG
Test System:EVERFINE GO-2000B_V1 SYSTEM V2.0.400
Humidity:65.0%
Test Distance:9.200m [K=1.0000]
Remarks:

ZONAL FLUX DIAGRAM

ZONAL FLUX DIAGRAM:

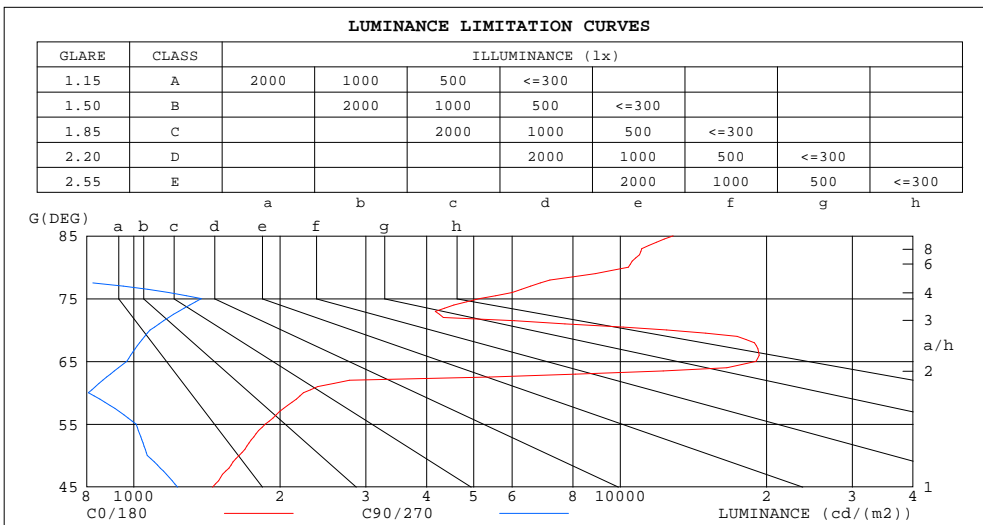
γ	C0	C45	C90	C135	C180	C225	C270	C315	γ	Φ zone	Φ total	%lum,lamp
10	1.591	1.618	1.638	1.641	1.598	1.672	1.638	1.610	0- 10	0.1524	0.1524	0.98,0.98
20	1.748	1.653	1.758	1.758	1.732	1.893	1.737	1.701	10- 20	0.4809	0.6333	4.06,4.06
30	1.912	1.675	1.904	1.856	1.842	2.097	1.842	1.899	20- 30	0.8435	1.477	9.47,9.47
40	2.037	1.581	1.737	1.916	1.928	2.292	1.894	2.078	30- 40	1.199	2.676	17.2,17.2
50	2.116	1.366	1.372	1.901	1.944	2.454	1.855	2.126	40- 50	1.496	4.172	26.8,26.8
60	2.234	1.239	0.8067	3.804	1.912	7.540	1.724	7.128	50- 60	2.407	6.579	42.2,42.2
70	8.531	1.109	0.7391	1.857	1.795	11.65	1.729	12.44	60- 70	5.318	11.90	76.3,76.3
80	3.609	0.7801	0	1.402	1.873	3.318	0	2.233	70- 80	3.027	14.92	95.7,95.7
90	1.890	0	0	0	1.234	0	0	0	80- 90	0.6704	15.59	100,100
100									90-100			
110									100-110			
120									110-120			
130									120-130			
140									130-140			
150									140-150			
160									150-160			
170									160-170			
180									170-180			
DEG	LUMINOUS INTENSITY:cd									UNIT:lm		

H(β) Range:-90 - 90DEG
H(β) Interval: 1.0DEG
Test Speed: HIGH
Temperature:25.3DEG
Operators:DAMIN
Test Date:2022-08-09

V(B) Range:-75 - 75DEG
V(B) Interval: 5.0DEG
Test System:EVERFINE GO-2000B_V1 SYSTEM V2.0.400
Humidity:65.0%
Test Distance:9.200m [K=1.0000]
Remarks:

LUMINANCE LIMITATION CURVES

Test:U:24.000V I:0.0460A P:1.0000W PF:1.0000 Freq:50.00Hz Lamp Flux:15.5948x1 lm		
NAME: KS-TMDM-Q3W	TYPE:	WEIGHT:
SPEC.:	DIM.:	SERIAL No.:KS-TMDM-Q3W
MFR.: KAMS	SUR.:	Shielding Angle:



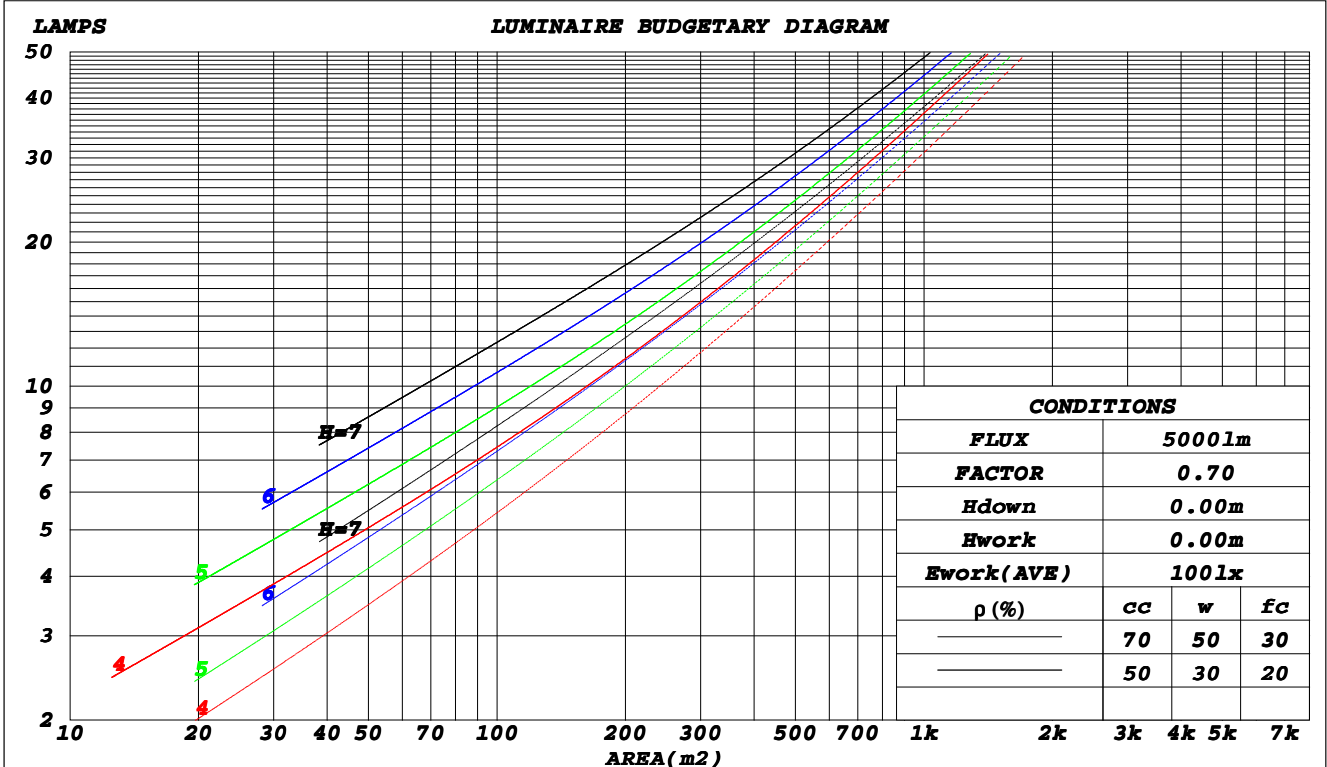
H(β) Range:-90 - 90DEG
H(β) Interval: 1.0DEG
Test Speed: HIGH
Temperature:25.3DEG
Operators:DAMIN
Test Date:2022-08-09

V(B) Range:-75 - 75DEG
V(B) Interval: 5.0DEG
Test System:EVERFINE GO-2000B_V1 SYSTEM V2.0.400
Humidity:65.0%
Test Distance:9.200m [K=1.0000]
Remarks:

CU AND LUMINAIRE BUDGETARY ESTIMATE DIAGRAM

Test:U:24.000V I:0.0460A P:1.0000W PF:1.0000 Freq:50.00Hz Lamp Flux:15.5948x1 lm		
NAME: KS-TMDM-Q3W	TYPE:	WEIGHT:
SPEC.:	DIM.:	SERIAL No.:KS-TMDM-Q3W
MFR.: KAMS	SUR.:	Shielding Angle:

ρ_{cc}	80%			70%			50%			30%			10%			0
ρ_w	50%	30%	10%	50%	30%	10%	50%	30%	10%	50%	30%	10%	50%	30%	10%	0
ρ_{fc}	20%			20%			20%			20%			20%			0
RCR	RCR:Room Cavity Ratio						Coefficients of Utilization(CU)									
0.0	1.19	1.19	1.19	1.16	1.16	1.16	1.11	1.11	1.11	1.06	1.06	1.06	1.02	1.02	1.02	1.00
1.0	.96	.90	.84	.94	.88	.83	.89	.85	.80	.85	.81	.78	.81	.78	.75	.73
2.0	.78	.68	.60	.76	.67	.59	.72	.64	.58	.68	.62	.56	.65	.60	.55	.52
3.0	.64	.53	.44	.62	.52	.44	.59	.50	.43	.56	.48	.42	.53	.47	.41	.38
4.0	.54	.43	.34	.53	.42	.33	.50	.40	.33	.47	.39	.32	.45	.38	.32	.29
5.0	.47	.35	.27	.45	.34	.26	.43	.33	.26	.41	.32	.26	.39	.31	.25	.23
6.0	.41	.30	.22	.40	.29	.22	.38	.28	.21	.36	.27	.21	.34	.27	.21	.18
7.0	.36	.26	.18	.35	.25	.18	.34	.24	.18	.32	.24	.18	.30	.23	.17	.15
8.0	.33	.23	.16	.32	.22	.15	.30	.22	.15	.29	.21	.15	.28	.20	.15	.13
9.0	.30	.20	.14	.29	.20	.13	.28	.19	.13	.27	.19	.13	.25	.18	.13	.11
10.0	.27	.18	.12	.27	.18	.12	.25	.17	.12	.24	.17	.12	.23	.17	.12	.10



H(β) Range:-90 - 90DEG
H(β) Interval: 1.0DEG
Test Speed: HIGH
Temperature:25.3DEG
Operators:DAMIN
Test Date:2022-08-09

V(B) Range:-75 - 75DEG
V(B) Interval: 5.0DEG
Test System:EVERFINE GO-2000B_V1 SYSTEM V2.0.400
Humidity:65.0%
Test Distance:9.200m [K=1.0000]
Remarks:

WEC AND CCEC

Test:U:24.000V I:0.0460A P:1.0000W PF:1.0000 Freq:50.00Hz Lamp Flux:15.5948x1 lm		
NAME: KS-TMDM-Q3W	TYPE:	WEIGHT:
SPEC.:	DIM.:	SERIAL No.:KS-TMDM-Q3W
MFR.: KAMS	SUR.:	Shielding Angle:

ρ_{cc}	80%			70%			50%			30%			10%			0
ρ_w	50%	30%	10%	50%	30%	10%	50%	30%	10%	50%	30%	10%	50%	30%	10%	0
ρ_{fc}	20%			20%			20%			20%			20%			0
RCR	RCR:Room Cavity Ratio						Wall Exitance Coefficients(WEC)									
0.0																
1.0	.455	.259	.082	.447	.255	.081	.433	.248	.079	.420	.242	.078	.408	.237	.076	
2.0	.413	.226	.069	.406	.224	.069	.393	.219	.068	.381	.214	.067	.370	.209	.066	
3.0	.367	.195	.059	.361	.193	.058	.350	.189	.058	.339	.186	.057	.329	.182	.056	
4.0	.327	.170	.050	.321	.168	.050	.311	.165	.049	.302	.162	.049	.293	.159	.048	
5.0	.293	.149	.043	.288	.148	.043	.279	.145	.043	.270	.143	.042	.262	.140	.042	
6.0	.264	.132	.038	.260	.131	.038	.252	.129	.038	.244	.127	.037	.237	.125	.037	
7.0	.240	.119	.034	.236	.118	.034	.229	.116	.033	.222	.114	.033	.216	.112	.033	
8.0	.220	.107	.030	.216	.107	.030	.210	.105	.030	.204	.103	.030	.198	.102	.030	
9.0	.203	.098	.027	.199	.097	.027	.194	.096	.027	.188	.094	.027	.183	.093	.027	
10.0	.188	.090	.025	.185	.089	.025	.180	.088	.025	.175	.087	.025	.170	.086	.025	

ρ_{cc}	80%			70%			50%			30%			10%			0
ρ_w	50%	30%	10%	50%	30%	10%	50%	30%	10%	50%	30%	10%	50%	30%	10%	0
ρ_{fc}	20%			20%			20%			20%			20%			0
RCR	RCR:Room Cavity Ratio						Ceiling Cavity Exitance Coefficients(CCEC)									
0.0	.190	.190	.190	.163	.163	.163	.111	.111	.111	.064	.064	.064	.020	.020	.020	
1.0	.190	.155	.123	.163	.133	.106	.111	.091	.073	.064	.053	.043	.021	.017	.014	
2.0	.188	.131	.083	.161	.113	.072	.111	.078	.050	.064	.045	.029	.020	.015	.010	
3.0	.183	.115	.061	.157	.099	.052	.108	.069	.037	.062	.040	.022	.020	.013	.007	
4.0	.176	.103	.047	.151	.089	.041	.104	.062	.029	.060	.036	.017	.019	.012	.006	
5.0	.168	.093	.038	.144	.081	.033	.099	.056	.023	.058	.033	.014	.019	.011	.005	
6.0	.159	.085	.032	.137	.074	.028	.094	.052	.020	.055	.030	.012	.018	.010	.004	
7.0	.151	.078	.028	.130	.068	.024	.090	.048	.017	.052	.028	.010	.017	.009	.003	
8.0	.143	.073	.024	.123	.063	.021	.085	.044	.015	.050	.026	.009	.016	.009	.003	
9.0	.135	.068	.022	.117	.059	.019	.081	.041	.014	.047	.024	.008	.015	.008	.003	
10.0	.128	.063	.020	.111	.055	.017	.077	.039	.012	.045	.023	.007	.015	.008	.002	

H(β) Range:-90 - 90DEG
H(β) Interval: 1.0DEG
Test Speed: HIGH
Temperature:25.3DEG
Operators:DAMIN
Test Date:2022-08-09

V(B) Range:-75 - 75DEG
V(B) Interval: 5.0DEG
Test System:EVERFINE GO-2000B_V1 SYSTEM V2.0.400
Humidity:65.0%
Test Distance:9.200m [K=1.0000]
Remarks:

UGR(Unified Glare Rating) Table

Test:U:24.000V I:0.0460A P:1.0000W PF:1.0000 Freq:50.00Hz Lamp Flux:15.5948x1 lm										
NAME: KS-TMDM-Q3W					TYPE:			WEIGHT:		
SPEC.:					DIM.:			SERIAL No.:KS-TMDM-Q3W		
MFR.: KAMS					SUR.:			Shielding Angle:		
ceiling/cavity	0.7	0.7	0.5	0.5	0.3	0.7	0.7	0.5	0.5	0.3
walls	0.5	0.3	0.5	0.3	0.3	0.5	0.3	0.5	0.3	0.3
working plane	0.2	0.2	0.2	0.2	0.2	0.2	0.2	0.2	0.2	0.2
Room dimensions	Viewed crosswise					Viewed endwise				
x = 2H y = 2H	29.0	30.9	29.3	31.2	31.4	23.1	25.1	23.4	25.3	25.6
3H	40.4	42.2	40.7	42.5	42.7	25.4	27.2	25.7	27.5	27.7
4H	40.6	42.4	41.0	42.7	42.9	26.8	28.6	27.2	28.9	29.1
6H	41.2	42.9	41.5	43.2	43.5	27.1	28.7	27.4	29.0	29.3
8H	41.7	43.4	42.1	43.7	44.0	27.0	28.6	27.4	28.9	29.3
12H	42.2	43.8	42.6	44.1	44.5	26.9	28.5	27.3	28.8	29.2
4H 2H	29.1	30.9	29.5	31.2	31.5	24.8	26.6	25.1	26.8	27.1
3H	40.0	41.6	40.4	41.9	42.3	27.0	28.6	27.4	28.9	29.2
4H	40.4	41.9	40.8	42.2	42.6	28.5	29.9	28.8	30.3	30.6
6H	41.2	42.6	41.7	42.9	43.3	28.7	30.0	29.1	30.4	30.8
8H	42.0	43.2	42.4	43.6	44.0	28.7	29.9	29.1	30.3	30.7
12H	42.8	43.9	43.2	44.3	44.8	28.6	29.8	29.1	30.2	30.6
8H 4H	40.3	41.6	40.8	41.9	42.4	29.9	31.1	30.3	31.5	31.9
6H	41.3	42.3	41.8	42.8	43.2	30.2	31.2	30.6	31.7	32.1
8H	42.2	43.1	42.7	43.6	44.0	30.2	31.1	30.6	31.5	32.0
12H	43.2	44.0	43.7	44.5	45.0	30.1	31.0	30.6	31.4	31.9
12H 4H	40.3	41.4	40.7	41.8	42.3	30.5	31.7	31.0	32.1	32.5
6H	41.3	42.2	41.8	42.7	43.1	30.9	31.8	31.3	32.2	32.7
8H	42.2	43.0	42.7	43.5	44.0	30.8	31.7	31.3	32.1	32.6
Variations with the observer position at spacings:										
S = 1.0H	+ 0.5 / - 1.0					+ 0.1 / - 0.1				
1.5H	+ 1.5 / - 3.3					+ 0.3 / - 0.2				
2.0H	+ 2.8 / - 0.6					+ 0.4 / - 0.5				

CIE Pub.117, 15.59 lm Total Lamp Luminous Flux Correct ($8\log(F/F_0) = -14.5$)

H(β) Range:-90 - 90DEG
H(β) Interval: 1.0DEG
Test Speed: HIGH
Temperature:25.3DEG
Operators:DAMIN
Test Date:2022-08-09

V(B) Range:-75 - 75DEG
V(B) Interval: 5.0DEG
Test System:EVERFINE GO-2000B_V1 SYSTEM V2.0.400
Humidity:65.0%
Test Distance:9.200m [K=1.0000]
Remarks:

UTILIZATION FACTORS TABLE

Test:U:24.000V I:0.0460A P:1.0000W PF:1.0000 Freq:50.00Hz Lamp Flux:15.5948x1 lm		
NAME: KS-TMDM-Q3W	TYPE:	WEIGHT:
SPEC.:	DIM.:	SERIAL No.:KS-TMDM-Q3W
MFR.: KAMS	SUR.:	Shielding Angle:

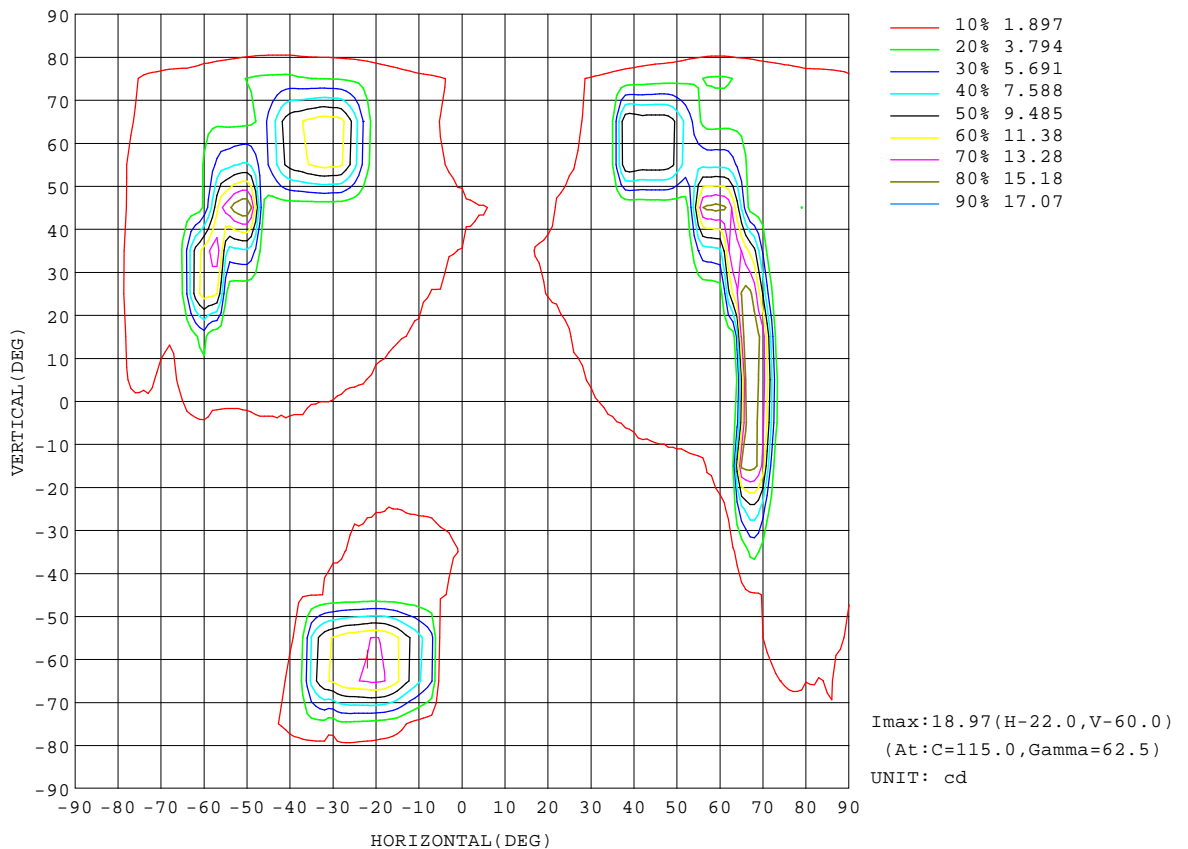
REFLECTANCE										
Ceiling	0.8	0.8	0.8	0.7	0.7	0.7	0.5	0.5	0.5	0
Walls	0.7	0.5	0.3	0.7	0.5	0.3	0.7	0.5	0.3	0
Working plane	0.2	0.2	0.2	0.2	0.2	0.2	0.2	0.2	0.2	0
ROOM INDEX	UTILIZATION FACTORS(PERCENT) $k(RI) \times RCR = 5$									
$k = 0.60$	45	31	22	44	30	22	42	30	22	14
0.80	52	38	28	51	37	28	49	36	28	19
1.00	59	44	34	58	43	34	55	46	33	24
1.25	67	52	41	65	51	41	61	49	40	30
1.50	73	58	48	71	57	47	67	55	46	36
2.00	82	69	59	79	68	58	75	65	57	47
2.50	88	77	68	86	75	67	81	72	65	54
3.00	93	83	75	91	81	74	86	78	72	61
4.00	100	92	85	97	90	83	92	86	81	70
5.00	104	97	92	101	95	90	96	91	87	77
ROOM INDEX	UF(total)									Direct
According to DIN EN 13032-2 2004			Suspended				SHRNOM = 1.25			

H(β) Range:-90 - 90DEG
H(β) Interval: 1.0DEG
Test Speed: HIGH
Temperature:25.3DEG
Operators:DAMIN
Test Date:2022-08-09

V(B) Range:-75 - 75DEG
V(B) Interval: 5.0DEG
Test System:EVERFINE GO-2000B_V1 SYSTEM V2.0.400
Humidity:65.0%
Test Distance:9.200m [K=1.0000]
Remarks:

ISOCANDELA DIAGRAM

Test:U:24.000V I:0.0460A P:1.0000W PF:1.0000 Freq:50.00Hz Lamp Flux:15.5948x1 lm		
NAME: KS-TMDM-Q3W	TYPE:	WEIGHT:
SPEC.:	DIM.:	SERIAL No.:KS-TMDM-Q3W
MFR.: KAMS	SUR.:	Shielding Angle:

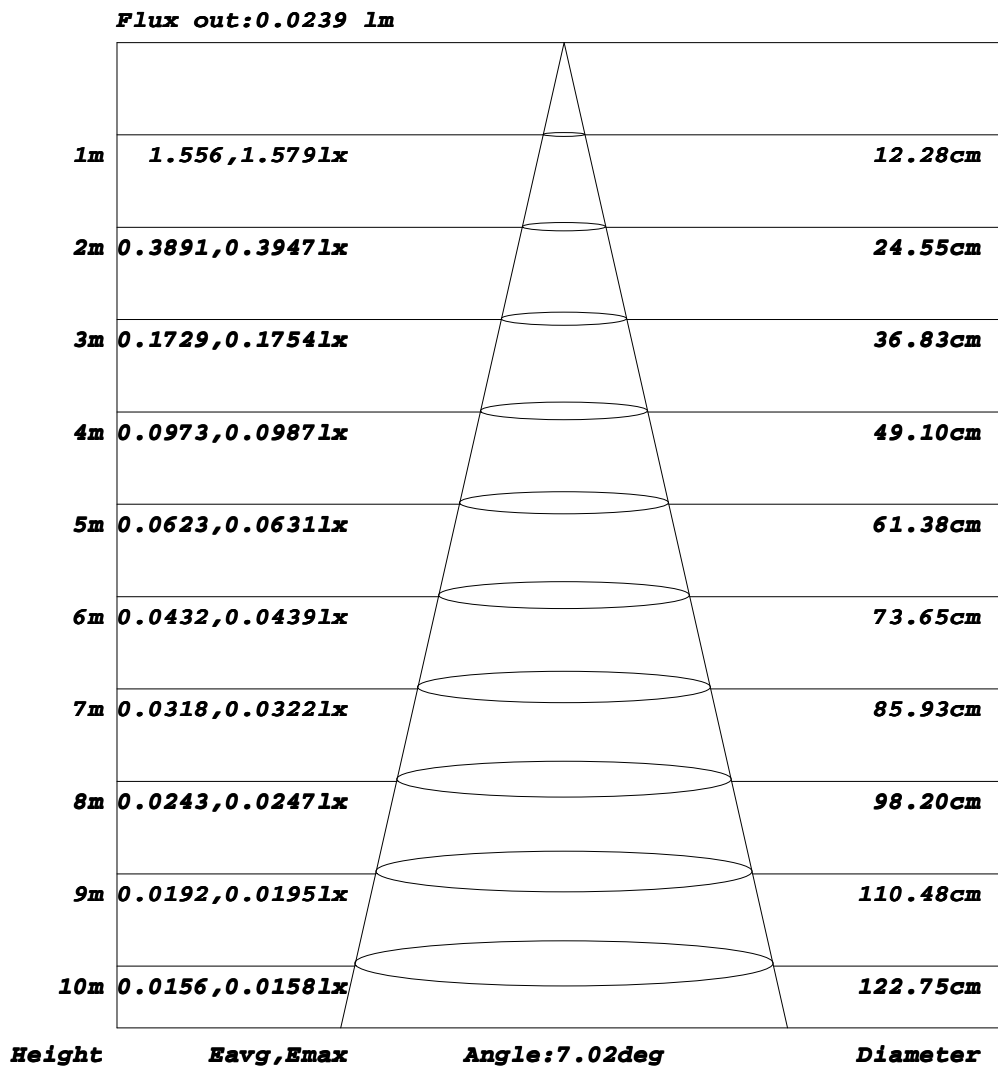


H(β) Range:-90 - 90DEG
H(β) Interval: 1.0DEG
Test Speed: HIGH
Temperature:25.3DEG
Operators:DAMIN
Test Date:2022-08-09

V(B) Range:-75 - 75DEG
V(B) Interval: 5.0DEG
Test System:EVERFINE GO-2000B_V1 SYSTEM V2.0.400
Humidity:65.0%
Test Distance:9.200m [K=1.0000]
Remarks:

AAI Figure

Test:U:24.000V I:0.0460A P:1.0000W PF:1.0000 Freq:50.00Hz Lamp Flux:15.5948x1 lm		
NAME: KS-TMDM-Q3W	TYPE:	WEIGHT:
SPEC.:	DIM.:	SERIAL No.:KS-TMDM-Q3W
MFR.: KAMS	SUR.:	Shielding Angle:



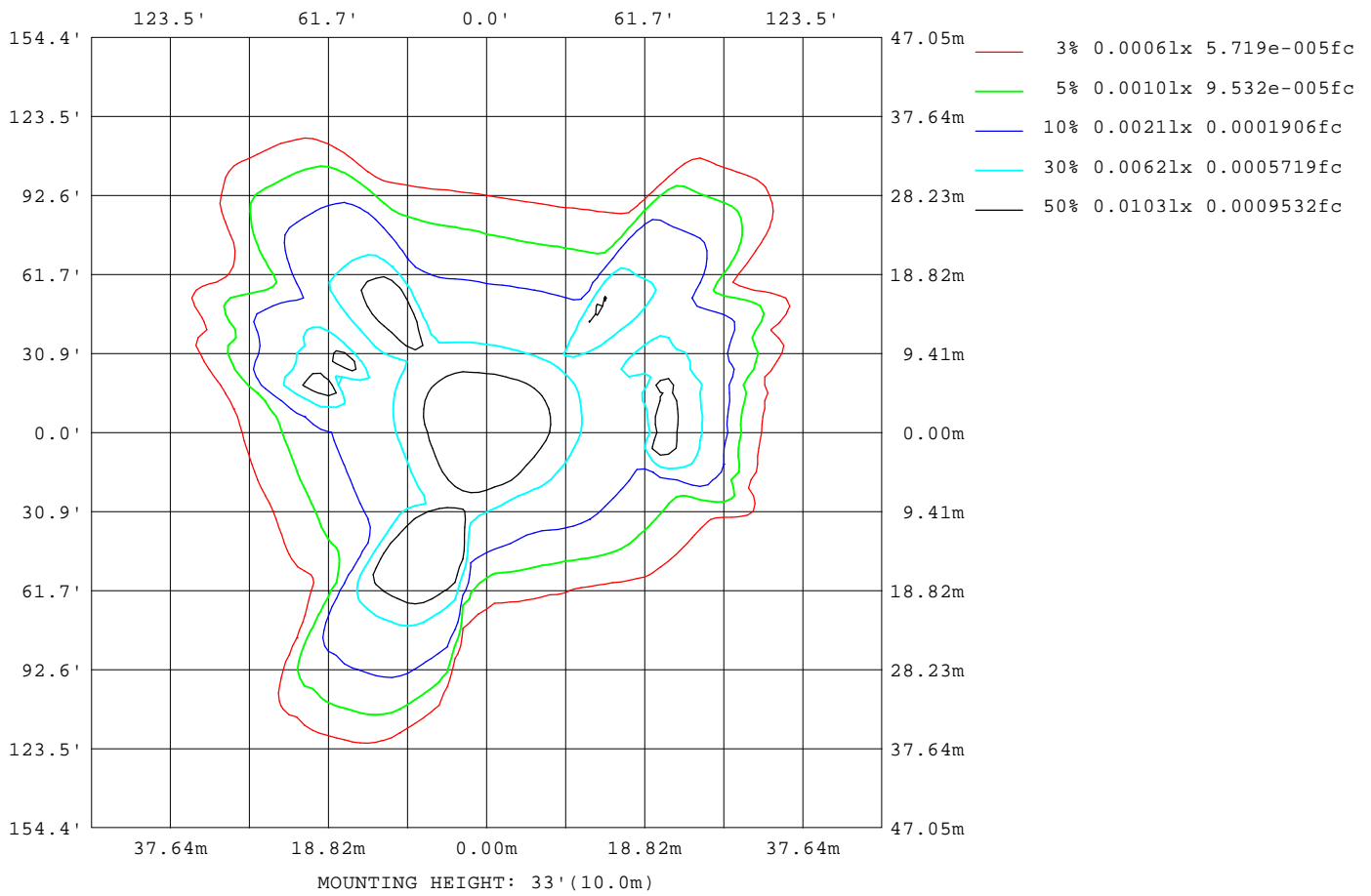
Note:The Curves indicate the illuminated area and the average illumination when the luminaire is at different distance.

H(β) Range:-90 - 90DEG
H(β) Interval: 1.0DEG
Test Speed: HIGH
Temperature:25.3DEG
Operators:DAMIN
Test Date:2022-08-09

V(B) Range:-75 - 75DEG
V(B) Interval: 5.0DEG
Test System:EVERFINE GO-2000B_V1 SYSTEM V2.0.400
Humidity:65.0%
Test Distance:9.200m [K=1.0000]
Remarks:

ISOLUX DIAGRAM

Test:U:24.000V I:0.0460A P:1.0000W PF:1.0000 Freq:50.00Hz Lamp Flux:15.5948x1 lm		
NAME: KS-TMDM-Q3W	TYPE:	WEIGHT:
SPEC.:	DIM.:	SERIAL No.:KS-TMDM-Q3W
MFR.: KAMS	SUR.:	Shielding Angle:



H(β) Range:-90 - 90DEG
H(β) Interval: 1.0DEG
Test Speed: HIGH
Temperature:25.3DEG
Operators:DAMIN
Test Date:2022-08-09

V(B) Range:-75 - 75DEG
V(B) Interval: 5.0DEG
Test System:EVERFINE GO-2000B_V1 SYSTEM V2.0.400
Humidity:65.0%
Test Distance:9.200m [K=1.0000]
Remarks:

LED Avg.L Report

Test:U:24.000V I:0.0460A P:1.0000W PF:1.0000 Freq:50.00Hz Lamp Flux:15.5948x1 lm		
NAME: KS-TMDM-Q3W	TYPE:	WEIGHT:
SPEC.:	DIM.:	SERIAL No.:KS-TMDM-Q3W
MFR.: KAMS	SUR.:	Shielding Angle:

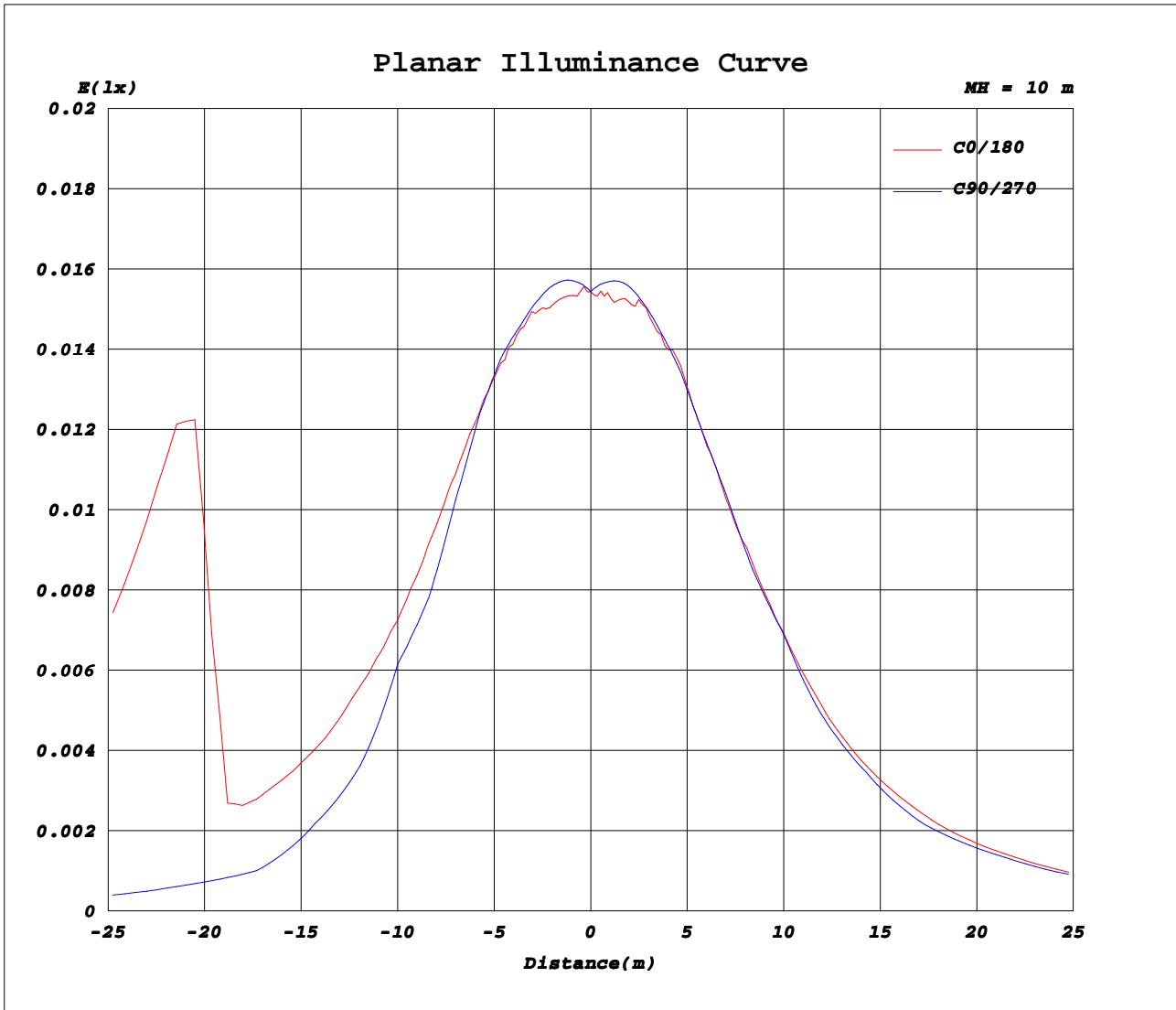
AvgL	cd/m2
L_0~180(65)av	10632
L_0~180(75)av	4370
L_0~180(85)av	10924
L_90~270(65)av	1537
L_90~270(75)av	2430
L_90~270(85)av	0
L_45(65)av	8044
L_45(75)av	8547
L_45(85)av	0

Standard: GB/T 29293-2012

H(β) Range:-90 - 90DEG
H(β) Interval: 1.0DEG
Test Speed: HIGH
Temperature:25.3DEG
Operators:DAMIN
Test Date:2022-08-09

V(B) Range:-75 - 75DEG
V(B) Interval: 5.0DEG
Test System:EVERFINE GO-2000B_V1 SYSTEM V2.0.400
Humidity:65.0%
Test Distance:9.200m [K=1.0000]
Remarks:

Planar Illuminance Curve



H(β) Range: -90 - 90DEG
H(β) Interval: 1.0DEG
Test Speed: HIGH
Temperature: 25.3DEG
Operators: DAMIN
Test Date: 2022-08-09

V(B) Range: -75 - 75DEG
V(B) Interval: 5.0DEG
Test System: EVERFINE GO-2000B_V1 SYSTEM V2.0.400
Humidity: 65.0%
Test Distance: 9.200m [K=1.0000]
Remarks:

LUMINOUS DISTRIBUTION INTENSITY DATA

Test:U:24.000V I:0.0460A P:1.0000W PF:1.0000 Freq:50.00Hz Lamp Flux:15.5948x1 lm		
NAME: KS-TMDM-Q3W	TYPE:	WEIGHT:
SPEC.:	DIM.:	SERIAL No.:KS-TMDM-Q3W
MFR.: KAMS	SUR.:	Shielding Angle:

Table--1

UNIT: cd

C(DEG) γ (DEG)	0	5	10	15	20	25	30	35	40	45	50	55	60	65	70	75	80	85	90
0	1.54	1.54	1.54	1.54	1.54	1.54	1.54	1.54	1.54	1.54	1.54	1.54	1.54	1.54	1.54	1.54	1.54	1.54	1.54
5	1.55	1.56	1.56	1.56	1.57	1.57	1.57	1.58	1.58	1.58	1.58	1.58	1.59	1.59	1.59	1.59	1.59	1.59	1.59
10	1.59	1.59	1.60	1.60	1.60	1.60	1.60	1.61	1.61	1.62	1.62	1.63	1.63	1.64	1.64	1.64	1.64	1.64	1.64
15	1.66	1.65	1.64	1.63	1.62	1.63	1.63	1.63	1.64	1.64	1.65	1.66	1.67	1.68	1.68	1.68	1.68	1.69	1.69
20	1.75	1.73	1.71	1.69	1.68	1.68	1.67	1.65	1.65	1.65	1.66	1.67	1.68	1.70	1.72	1.73	1.74	1.75	1.76
25	1.83	1.80	1.76	1.74	1.73	1.70	1.67	1.66	1.65	1.66	1.66	1.68	1.70	1.73	1.76	1.78	1.80	1.83	1.85
30	1.91	1.86	1.81	1.78	1.75	1.71	1.69	1.67	1.67	1.67	1.68	1.69	1.71	1.74	1.78	1.81	1.82	1.87	1.90
35	1.98	1.91	1.85	1.80	1.74	1.69	1.67	1.66	1.64	1.64	1.66	1.69	1.65	1.64	1.66	1.69	1.73	1.80	1.87
40	2.04	1.95	1.89	1.81	1.73	1.70	1.66	1.63	1.62	1.58	1.50	1.48	1.42	1.40	1.41	1.47	1.53	1.63	1.74
45	2.05	1.97	1.90	1.81	1.76	1.69	1.64	1.61	1.54	1.45	1.35	1.24	1.19	1.16	1.21	1.31	1.44	1.60	1.74
50	2.12	1.99	1.89	1.80	1.73	1.67	1.62	1.53	1.46	1.37	1.23	1.05	0.99	0.98	1.01	1.07	1.15	1.24	1.37
55	2.14	2.01	1.87	1.80	1.70	1.63	1.55	1.50	1.39	1.26	1.16	1.05	0.94	0.89	0.88	0.92	0.95	1.01	1.16
60	2.23	2.12	1.94	1.82	1.73	1.60	1.51	1.42	1.36	1.24	1.08	0.94	0.86	0.82	0.78	0.76	0.75	0.73	0.81
65	16.1	15.4	10.7	1.93	1.69	1.58	1.47	1.41	1.30	1.16	1.02	0.90	0.81	0.78	0.74	0.73	0.72	0.72	0.82
70	8.53	12.2	8.32	2.57	1.70	1.58	1.47	1.39	1.31	1.11	0.94	0.83	0.78	0.75	0.73	0.72	0.72	0.71	0.74
75	2.66	2.45	2.22	1.89	1.73	1.61	1.46	1.33	1.23	1.08	0.90	0.79	0.75	0.72	0.71	0.71	0.71	0.71	0.71
80	3.61	2.92	2.55	2.06	1.75	1.51	1.39	1.28	1.15	0.78	0.48	0.31	0.22	0.14	0.09	0.05	0.02	0.01	0.00
85	2.24	2.45	2.01	1.68	1.24	0.46	0.00	0.00	0.00	0.00	0.00	0.00	0.00	0.00	0.00	0.00	0.00	0.00	0.00
90	1.89	0.00	0.00	0.00	0.00	0.00	0.00	0.00	0.00	0.00	0.00	0.00	0.00	0.00	0.00	0.00	0.00	0.00	0.00

H(β) Range:-90 - 90DEG
H(β) Interval: 1.0DEG
Test Speed: HIGH
Temperature:25.3DEG
Operators:DAMIN
Test Date:2022-08-09

V(B) Range:-75 - 75DEG
V(B) Interval: 5.0DEG
Test System:EVERFINE GO-2000B_V1 SYSTEM V2.0.400
Humidity:65.0%
Test Distance:9.200m [K=1.0000]
Remarks:

LUMINOUS DISTRIBUTION INTENSITY DATA

Test:U:24.000V I:0.0460A P:1.0000W PF:1.0000 Freq:50.00Hz Lamp Flux:15.5948xl lm		
NAME: KS-TMDM-Q3W	TYPE:	WEIGHT:
SPEC.:	DIM.:	SERIAL No.:KS-TMDM-Q3W
MFR.: KAMS	SUR.:	Shielding Angle:

Table--2

UNIT: cd

C (DEG) γ (DEG)	95	100	105	110	115	120	125	130	135	140	145	150	155	160	165	170	175	180	185
0	1.54	1.54	1.54	1.54	1.54	1.54	1.54	1.54	1.54	1.54	1.54	1.54	1.54	1.54	1.54	1.54	1.54	1.54	1.54
5	1.60	1.60	1.60	1.60	1.59	1.60	1.60	1.59	1.59	1.58	1.58	1.58	1.57	1.57	1.57	1.57	1.56	1.56	1.56
10	1.64	1.64	1.65	1.65	1.65	1.64	1.64	1.64	1.64	1.64	1.65	1.65	1.64	1.63	1.62	1.62	1.61	1.60	1.61
15	1.71	1.71	1.70	1.70	1.70	1.70	1.70	1.70	1.70	1.69	1.70	1.70	1.71	1.72	1.71	1.70	1.69	1.68	1.70
20	1.77	1.79	1.78	1.77	1.77	1.77	1.76	1.76	1.76	1.76	1.75	1.75	1.75	1.75	1.75	1.75	1.74	1.73	1.77
25	1.86	1.86	1.86	1.85	1.85	1.84	1.83	1.82	1.81	1.80	1.78	1.77	1.78	1.79	1.80	1.81	1.82	1.83	1.87
30	1.94	1.94	1.93	1.93	1.92	1.91	1.90	1.88	1.86	1.83	1.81	1.79	1.78	1.79	1.80	1.82	1.83	1.84	1.91
35	1.92	1.95	1.98	1.99	1.98	1.97	1.96	1.92	1.88	1.85	1.82	1.79	1.77	1.77	1.79	1.82	1.85	1.87	1.94
40	1.85	1.93	2.00	2.03	2.03	2.00	1.97	1.93	1.92	1.85	1.82	1.79	1.77	1.76	1.78	1.83	1.88	1.93	2.00
45	1.89	2.02	2.08	2.09	2.06	2.03	2.00	1.93	1.88	1.85	1.82	1.77	1.74	1.74	1.73	1.80	1.88	1.96	2.02
50	1.56	2.33	4.36	4.70	4.38	3.06	1.97	1.93	1.90	1.81	1.75	1.73	1.70	1.70	1.72	1.78	1.85	1.94	2.02
55	1.44	6.64	8.73	10.3	10.2	8.67	6.73	4.40	2.03	1.77	1.72	1.67	1.66	1.66	1.68	1.72	1.82	1.92	2.03
60	1.05	6.80	11.8	15.3	16.1	14.1	11.4	7.98	3.80	1.77	1.66	1.63	1.58	1.60	1.63	1.69	1.79	1.91	2.28
65	1.10	7.26	10.8	14.4	15.9	16.3	16.2	11.2	2.24	1.56	1.58	1.53	1.52	1.54	1.60	1.66	1.75	1.90	2.67
70	0.86	3.73	6.17	9.09	10.2	10.7	9.85	4.50	1.86	1.46	1.56	1.52	1.49	1.47	1.54	1.62	1.71	1.80	1.92
75	0.79	1.30	2.68	3.89	4.76	5.36	5.59	4.00	1.98	1.56	1.51	1.50	1.44	1.43	1.46	1.56	1.68	1.86	2.15
80	0.01	0.04	0.17	0.38	0.67	0.87	1.35	1.56	1.40	1.48	1.41	1.41	1.40	1.39	1.41	1.45	1.59	1.87	1.96
85	0.00	0.00	0.00	0.00	0.00	0.00	0.00	0.00	0.00	0.00	0.00	0.00	0.47	1.21	1.39	1.38	1.36	1.57	1.44
90	0.00	0.00	0.00	0.00	0.00	0.00	0.00	0.00	0.00	0.00	0.00	0.00	0.00	0.00	0.00	0.00	0.00	1.23	0.00

H(β) Range:-90 - 90DEG
H(β) Interval: 1.0DEG
Test Speed: HIGH
Temperature:25.3DEG
Operators:DAMIN
Test Date:2022-08-09

V(B) Range:-75 - 75DEG
V(B) Interval: 5.0DEG
Test System:EVERFINE GO-2000B_V1 SYSTEM V2.0.400
Humidity:65.0%
Test Distance:9.200m [K=1.0000]
Remarks:

LUMINOUS DISTRIBUTION INTENSITY DATA

Test:U:24.000V I:0.0460A P:1.0000W PF:1.0000 Freq:50.00Hz Lamp Flux:15.5948x1 lm		
NAME: KS-TMDM-Q3W	TYPE:	WEIGHT:
SPEC.:	DIM.:	SERIAL No.:KS-TMDM-Q3W
MFR.: KAMS	SUR.:	Shielding Angle:

Table--3

UNIT: cd

C (DEG) γ (DEG)	190	195	200	205	210	215	220	225	230	235	240	245	250	255	260	265	270	275	280
0	1.54	1.54	1.54	1.54	1.54	1.54	1.54	1.54	1.54	1.54	1.54	1.54	1.54	1.54	1.54	1.54	1.54	1.54	1.54
5	1.57	1.57	1.58	1.58	1.58	1.59	1.59	1.60	1.60	1.60	1.60	1.60	1.60	1.60	1.59	1.59	1.59	1.59	1.59
10	1.63	1.64	1.66	1.67	1.68	1.68	1.67	1.67	1.67	1.66	1.66	1.65	1.64	1.64	1.63	1.64	1.64	1.64	1.64
15	1.72	1.75	1.77	1.77	1.76	1.76	1.76	1.76	1.76	1.76	1.76	1.75	1.76	1.74	1.72	1.69	1.68	1.68	1.68
20	1.80	1.83	1.84	1.85	1.85	1.87	1.89	1.89	1.89	1.86	1.85	1.83	1.81	1.78	1.75	1.74	1.74	1.74	1.73
25	1.91	1.94	1.96	1.97	2.00	2.02	2.00	1.98	1.96	1.96	1.95	1.92	1.89	1.88	1.86	1.82	1.80	1.79	1.79
30	1.96	1.99	2.04	2.08	2.10	2.10	2.09	2.10	2.10	2.07	2.05	2.02	1.96	1.94	1.87	1.87	1.84	1.84	1.84
35	2.01	2.06	2.12	2.17	2.19	2.21	2.24	2.19	2.18	2.14	2.12	2.10	2.05	1.99	1.97	1.91	1.89	1.87	1.86
40	2.07	2.13	2.20	2.22	2.26	2.29	2.31	2.29	2.26	2.24	2.22	2.15	2.10	2.02	1.98	1.92	1.89	1.88	1.87
45	2.08	2.15	2.22	2.28	2.33	2.36	2.39	2.40	2.36	2.29	2.26	2.22	2.17	2.11	2.04	1.99	1.95	1.91	1.89
50	2.11	2.19	2.26	2.33	2.38	2.44	2.45	2.45	2.44	2.40	2.41	2.29	2.17	2.07	1.99	1.91	1.85	1.84	1.82
55	2.14	2.25	2.34	3.04	2.62	2.52	2.55	2.80	4.92	5.59	4.14	2.61	2.26	2.08	1.98	1.90	1.83	1.77	1.77
60	3.92	9.47	3.15	8.32	6.08	3.10	5.00	7.54	9.98	11.7	8.85	3.25	2.27	2.01	1.91	1.82	1.72	1.71	1.71
65	7.61	15.5	13.4	12.4	14.9	4.62	6.42	11.7	15.1	16.3	11.0	4.33	2.51	2.17	1.99	1.88	1.78	1.70	1.67
70	2.33	3.93	4.68	9.01	8.03	5.58	8.05	11.7	11.7	11.5	9.64	4.54	2.59	2.22	2.01	1.85	1.73	1.65	1.61
75	2.59	2.94	3.22	3.61	3.37	3.29	4.35	7.28	7.20	6.46	5.18	3.51	2.83	2.45	2.14	1.94	1.80	1.66	1.57
80	2.49	2.92	3.49	3.17	3.30	3.47	3.95	3.32	2.43	1.63	1.11	0.69	0.37	0.17	0.07	0.01	0.00	0.01	0.05
85	1.77	2.28	2.04	0.85	0.00	0.00	0.00	0.00	0.00	0.00	0.00	0.00	0.00	0.00	0.00	0.00	0.00	0.00	0.00
90	0.00	0.00	0.00	0.00	0.00	0.00	0.00	0.00	0.00	0.00	0.00	0.00	0.00	0.00	0.00	0.00	0.00	0.00	0.00

H(β) Range:-90 - 90DEG
H(β) Interval: 1.0DEG
Test Speed: HIGH
Temperature:25.3DEG
Operators:DAMIN
Test Date:2022-08-09

V(B) Range:-75 - 75DEG
V(B) Interval: 5.0DEG
Test System:EVERFINE GO-2000B_V1 SYSTEM V2.0.400
Humidity:65.0%
Test Distance:9.200m [K=1.0000]
Remarks:

LUMINOUS DISTRIBUTION INTENSITY DATA

Test:U:24.000V I:0.0460A P:1.0000W PF:1.0000 Freq:50.00Hz Lamp Flux:15.5948x1 lm		
NAME: KS-TMDM-Q3W	TYPE:	WEIGHT:
SPEC.:	DIM.:	SERIAL No.:KS-TMDM-Q3W
MFR.: KAMS	SUR.:	Shielding Angle:

Table--4

UNIT: cd

C (DEG) γ (DEG)	285	290	295	300	305	310	315	320	325	330	335	340	345	350	355				
0	1.54	1.54	1.54	1.54	1.54	1.54	1.54	1.54	1.54	1.54	1.54	1.54	1.54	1.54	1.54				
5	1.59	1.59	1.59	1.59	1.58	1.58	1.58	1.58	1.58	1.57	1.57	1.57	1.56	1.56	1.56				
10	1.64	1.63	1.62	1.62	1.62	1.61	1.61	1.61	1.60	1.60	1.60	1.60	1.60	1.60	1.59				
15	1.68	1.67	1.66	1.66	1.65	1.66	1.66	1.66	1.66	1.66	1.65	1.64	1.65	1.65	1.66				
20	1.72	1.72	1.71	1.71	1.71	1.70	1.70	1.72	1.74	1.76	1.76	1.75	1.74	1.74	1.75				
25	1.78	1.78	1.78	1.78	1.80	1.80	1.81	1.81	1.81	1.81	1.84	1.85	1.83	1.82	1.83				
30	1.85	1.84	1.85	1.85	1.86	1.88	1.90	1.92	1.93	1.93	1.93	1.95	1.95	1.92	1.91				
35	1.86	1.86	1.88	1.93	1.97	1.98	1.99	2.01	2.03	2.07	2.05	2.04	2.04	2.02	1.99				
40	1.86	1.86	1.88	1.91	1.96	2.02	2.08	2.13	2.13	2.14	2.15	2.12	2.12	2.10	2.05				
45	1.86	1.85	1.87	1.93	1.98	2.02	2.09	2.17	2.23	2.22	2.22	2.22	2.18	2.15	2.10				
50	1.82	1.83	1.85	1.91	1.95	2.05	2.13	2.19	2.23	2.32	2.30	2.27	2.22	2.18	2.14				
55	1.77	1.79	1.85	1.91	1.99	2.13	2.31	2.20	2.31	2.35	2.37	2.33	2.29	2.22	2.18				
60	1.74	1.77	1.83	1.89	1.98	2.95	7.13	4.79	2.33	2.43	3.23	2.80	2.40	2.58	2.30				
65	1.68	1.72	1.80	1.91	2.23	11.7	12.1	9.74	6.47	4.38	11.9	8.18	14.0	14.4	15.5				
70	1.63	1.69	1.80	1.93	2.22	9.75	12.4	13.9	8.53	7.82	12.0	13.9	12.5	14.0	13.4				
75	1.56	1.60	1.76	1.95	3.16	6.12	7.36	8.47	6.87	2.86	4.88	3.64	2.77	2.70	2.67				
80	0.11	0.20	0.35	0.58	0.95	1.49	2.23	3.22	3.59	3.61	3.36	3.39	3.59	3.24	3.30				
85	0.00	0.00	0.00	0.00	0.00	0.00	0.00	0.00	0.00	0.00	1.24	2.81	3.01	2.93	2.91				
90	0.00	0.00	0.00	0.00	0.00	0.00	0.00	0.00	0.00	0.00	0.00	0.00	0.00	0.00	0.00				

H(β) Range:-90 - 90DEG
H(β) Interval: 1.0DEG
Test Speed: HIGH
Temperature:25.3DEG
Operators:DAMIN
Test Date:2022-08-09

V(B) Range:-75 - 75DEG
V(B) Interval: 5.0DEG
Test System:EVERFINE GO-2000B_V1 SYSTEM V2.0.400
Humidity:65.0%
Test Distance:9.200m [K=1.0000]
Remarks: