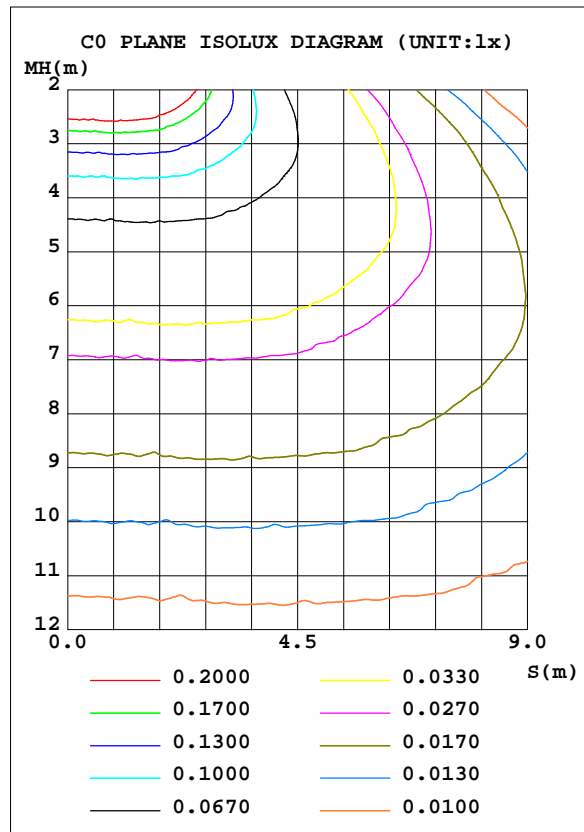
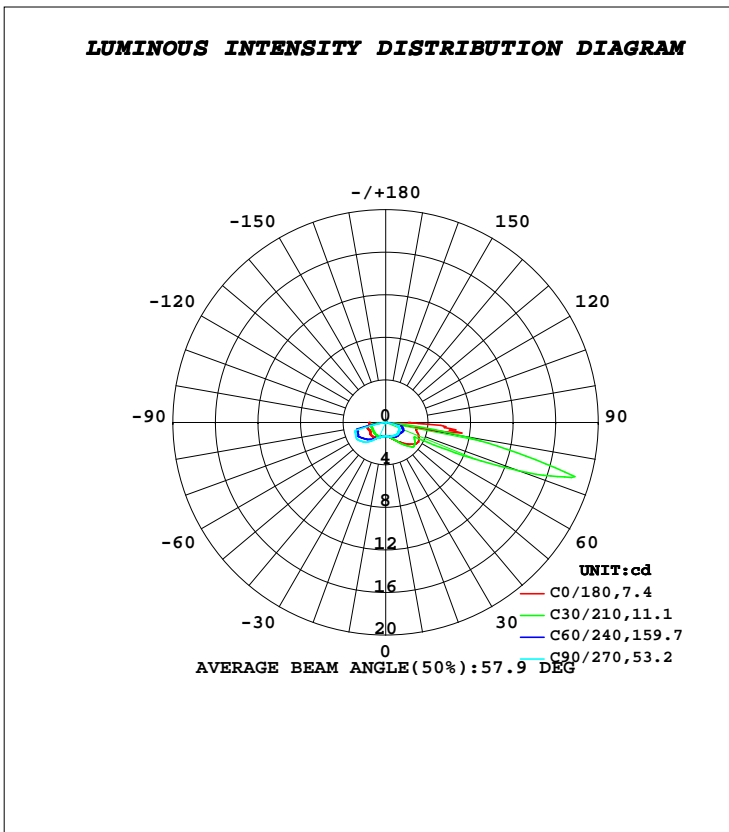


LUMINAIRE PHOTOMETRIC TEST REPORT

Test:U:24.000V I:0.0770A P:3.0000W PF:1.0000 Freq:50.00Hz Lamp Flux:13.4784x1 lm		
NAME: KS-TMDM-X3W	TYPE:	WEIGHT:
SPEC.:	DIM.:	SERIAL No.:KS-TMDM-X3W
MFR.: KAMS	SUR.:	Shielding Angle:

DATA OF LAMP		PHOTOMETRIC DATA			
MODEL	KS-TMDM-X3W	Imax(cd)	18.52	S/MH(C0/180)	2.02
NOMINAL POWER(W)	3	LOR(%)	100.0	S/MH(C90/270)	2.63
RATED VOLTAGE(V)	24	TOTAL FLUX(lm)	13.478	η UP, DN(C0-180)	0.0,60.8
NOMINAL FLUX(lm)	13.4784	CIE CLASS	DIRECT	η UP, DN(C180-360)	0.0,39.2
LAMPS INSIDE	1	η up(%)	0.0	CIBSE SHR NOM	2.00
TEST VOLTAGE(V)	24	η down(%)	100.0	CIBSE SHR MAX	2.00



H(β) Range:-90 - 90DEG
H(β) Interval: 1.0DEG
Test Speed: HIGH
Temperature:25.3DEG
Operators:DAMIN
Test Date:2022-08-09

V(B) Range:-75 - 75DEG
V(B) Interval: 5.0DEG
Test System:EVERFINE GO-2000B_V1 SYSTEM V2.0.400
Humidity:65.0%
Test Distance:9.200m [K=1.0000]
Remarks:

ZONAL FLUX DIAGRAM

ZONAL FLUX DIAGRAM:

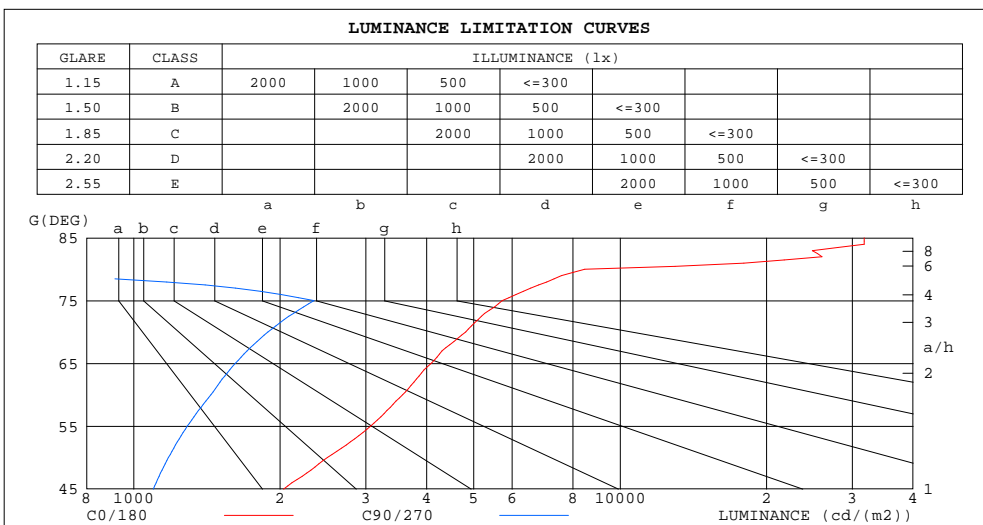
γ	C0	C45	C90	C135	C180	C225	C270	C315	γ	Φ zone	Φ total	%lum,lamp
10	1.364	1.355	1.366	1.398	1.309	1.349	1.351	1.347	0- 10	0.1273	0.1273	0.94,0.94
20	1.607	1.480	1.421	1.658	1.457	1.431	1.489	1.359	10- 20	0.4042	0.5315	3.94,3.94
30	1.991	1.785	1.458	2.097	1.598	1.590	1.708	1.449	20- 30	0.7427	1.274	9.45,9.45
40	2.563	2.345	1.520	2.740	1.818	1.655	2.341	1.468	30- 40	1.182	2.456	18.2,18.2
50	3.214	2.312	1.515	3.306	1.849	1.770	2.824	1.465	40- 50	1.697	4.153	30.8,30.8
60	3.573	2.962	1.442	3.433	1.740	1.807	3.157	1.425	50- 60	2.097	6.250	46.4,46.4
70	3.291	9.391	1.291	3.520	1.818	1.799	3.038	1.420	60- 70	2.654	8.904	66.1,66.1
80	2.938	2.742	0	6.876	1.575	1.317	0	1.129	70- 80	3.633	12.54	93,93
90	2.155	0	0	0	1.420	0	0	0	80- 90	0.9413	13.48	100,100
100									90-100			
110									100-110			
120									110-120			
130									120-130			
140									130-140			
150									140-150			
160									150-160			
170									160-170			
180									170-180			
DEG	LUMINOUS INTENSITY:cd									UNIT:lm		

H(β) Range:-90 - 90DEG
H(β) Interval: 1.0DEG
Test Speed: HIGH
Temperature:25.3DEG
Operators:DAMIN
Test Date:2022-08-09

V(B) Range:-75 - 75DEG
V(B) Interval: 5.0DEG
Test System:EVERFINE GO-2000B_V1 SYSTEM V2.0.400
Humidity:65.0%
Test Distance:9.200m [K=1.0000]
Remarks:

LUMINANCE LIMITATION CURVES

Test:U:24.000V I:0.0770A P:3.0000W PF:1.0000 Freq:50.00Hz Lamp Flux:13.4784x1 lm		
NAME: KS-TMDM-X3W	TYPE:	WEIGHT:
SPEC.:	DIM.:	SERIAL No.:KS-TMDM-X3W
MFR.: KAMS	SUR.:	Shielding Angle:



LUMINANCE cd/(m2)		
G (DEG)	C0/180	C90/270
85	31751	0
80	8459	0
75	5722	2347
70	4810	1887
65	4088	1616
60	3573	1442
55	3068	1289
50	2500	1178
45	2034	1097

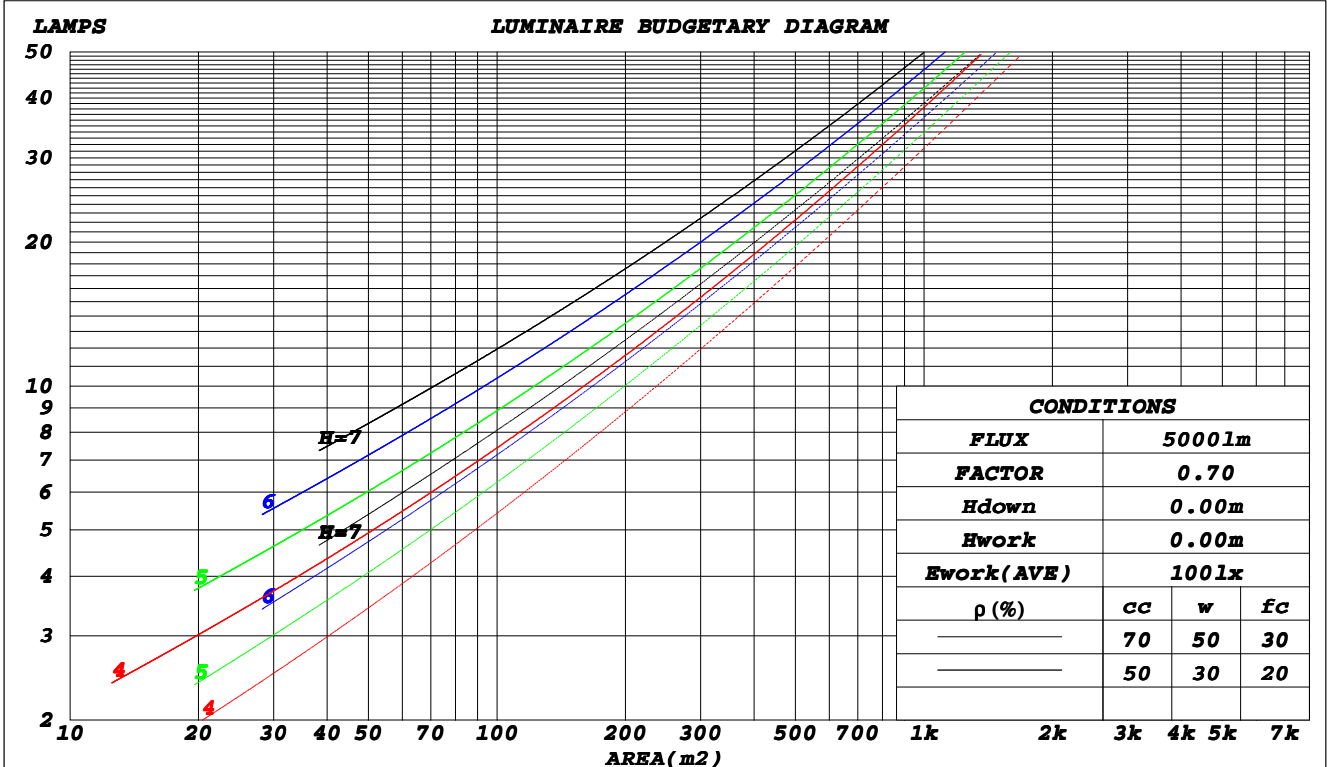
H(β) Range:-90 - 90DEG
H(β) Interval: 1.0DEG
Test Speed: HIGH
Temperature:25.3DEG
Operators:DAMIN
Test Date:2022-08-09

V(B) Range:-75 - 75DEG
V(B) Interval: 5.0DEG
Test System:EVERFINE GO-2000B_V1 SYSTEM V2.0.400
Humidity:65.0%
Test Distance:9.200m [K=1.0000]
Remarks:

CU AND LUMINAIRE BUDGETARY ESTIMATE DIAGRAM

Test:U:24.000V I:0.0770A P:3.0000W PF:1.0000 Freq:50.00Hz Lamp Flux:13.4784x1 lm		
NAME: KS-TMDM-X3W	TYPE:	WEIGHT:
SPEC.:	DIM.:	SERIAL No.:KS-TMDM-X3W
MFR.: KAMS	SUR.:	Shielding Angle:

ρ_{cc}	80%			70%			50%			30%			10%			0
ρ_w	50%	30%	10%	50%	30%	10%	50%	30%	10%	50%	30%	10%	50%	30%	10%	0
ρ_{fc}	20%			20%			20%			20%			20%			0
RCR	RCR:Room Cavity Ratio															
	Coefficients of Utilization(CU)															
0.0	1.19	1.19	1.19	1.16	1.16	1.16	1.11	1.11	1.11	1.06	1.06	1.06	1.02	1.02	1.02	1.00
1.0	.95	.88	.82	.92	.86	.80	.88	.82	.78	.83	.79	.75	.80	.76	.73	.70
2.0	.76	.66	.58	.74	.65	.57	.70	.63	.56	.67	.60	.54	.63	.58	.53	.50
3.0	.64	.52	.43	.62	.51	.43	.58	.49	.42	.55	.47	.41	.52	.46	.40	.37
4.0	.54	.43	.34	.53	.42	.33	.50	.40	.33	.47	.39	.32	.45	.38	.32	.29
5.0	.47	.36	.27	.46	.35	.27	.43	.34	.26	.41	.33	.26	.39	.32	.26	.23
6.0	.41	.30	.22	.40	.30	.22	.38	.29	.22	.36	.28	.22	.35	.27	.21	.19
7.0	.37	.26	.19	.36	.26	.19	.34	.25	.19	.33	.25	.18	.31	.24	.18	.16
8.0	.33	.23	.16	.33	.23	.16	.31	.22	.16	.30	.22	.16	.28	.21	.16	.13
9.0	.30	.21	.14	.30	.20	.14	.28	.20	.14	.27	.19	.14	.26	.19	.14	.12
10.0	.28	.19	.13	.27	.18	.13	.26	.18	.12	.25	.18	.12	.24	.17	.12	.10



H(β) Range:-90 - 90DEG
H(β) Interval: 1.0DEG
Test Speed: HIGH
Temperature:25.3DEG
Operators:DAMIN
Test Date:2022-08-09

V(B) Range:-75 - 75DEG
V(B) Interval: 5.0DEG
Test System:EVERFINE GO-2000B_V1 SYSTEM V2.0.400
Humidity:65.0%
Test Distance:9.200m [K=1.0000]
Remarks:

WEC AND CCEC

Test:U:24.000V I:0.0770A P:3.0000W PF:1.0000 Freq:50.00Hz Lamp Flux:13.4784x1 lm		
NAME: KS-TMDM-X3W	TYPE:	WEIGHT:
SPEC.:	DIM.:	SERIAL No.:KS-TMDM-X3W
MFR.: KAMS	SUR.:	Shielding Angle:

ρ_{cc}	80%			70%			50%			30%			10%			0
ρ_w	50%	30%	10%	50%	30%	10%	50%	30%	10%	50%	30%	10%	50%	30%	10%	0
ρ_{fc}	20%			20%			20%			20%			20%			0
RCR	RCR:Room Cavity Ratio						Wall Exitance Coefficients(WEC)									
0.0																
1.0	.488	.278	.088	.481	.274	.087	.467	.268	.085	.454	.262	.084	.442	.256	.083	
2.0	.426	.234	.072	.419	.231	.071	.406	.226	.070	.394	.221	.069	.383	.217	.068	
3.0	.372	.198	.059	.365	.196	.059	.354	.192	.058	.343	.188	.058	.333	.184	.057	
4.0	.327	.170	.050	.321	.168	.050	.311	.165	.049	.302	.162	.049	.293	.159	.048	
5.0	.291	.148	.043	.286	.147	.043	.277	.144	.042	.269	.142	.042	.261	.139	.042	
6.0	.262	.131	.038	.258	.130	.037	.250	.128	.037	.242	.126	.037	.235	.124	.037	
7.0	.238	.118	.033	.234	.117	.033	.227	.115	.033	.220	.113	.033	.214	.111	.033	
8.0	.218	.107	.030	.215	.106	.030	.208	.104	.030	.202	.103	.030	.197	.101	.029	
9.0	.201	.097	.027	.198	.097	.027	.192	.095	.027	.187	.094	.027	.182	.092	.027	
10.0	.187	.089	.025	.184	.089	.025	.179	.088	.025	.174	.086	.025	.169	.085	.024	

ρ_{cc}	80%			70%			50%			30%			10%			0
ρ_w	50%	30%	10%	50%	30%	10%	50%	30%	10%	50%	30%	10%	50%	30%	10%	0
ρ_{fc}	20%			20%			20%			20%			20%			0
RCR	RCR:Room Cavity Ratio						Ceiling Cavity Exitance Coefficients(CCEC)									
0.0																
1.0	.190	.190	.190	.163	.163	.163	.111	.111	.111	.064	.064	.064	.020	.020	.020	
2.0	.193	.155	.120	.165	.133	.103	.113	.091	.072	.065	.053	.042	.021	.017	.013	
3.0	.190	.131	.082	.163	.113	.071	.112	.078	.049	.064	.045	.029	.021	.015	.009	
4.0	.184	.115	.060	.158	.099	.052	.108	.069	.036	.063	.040	.021	.020	.013	.007	
5.0	.176	.103	.047	.151	.089	.041	.104	.062	.029	.060	.036	.017	.019	.012	.006	
6.0	.167	.093	.038	.144	.080	.033	.099	.056	.023	.057	.033	.014	.018	.011	.005	
7.0	.159	.085	.032	.136	.074	.028	.094	.052	.020	.055	.030	.012	.018	.010	.004	
8.0	.150	.078	.028	.129	.068	.024	.089	.048	.017	.052	.028	.010	.017	.009	.003	
9.0	.142	.073	.025	.123	.063	.021	.085	.044	.015	.049	.026	.009	.016	.009	.003	
10.0	.135	.068	.022	.116	.059	.019	.081	.041	.014	.047	.024	.008	.015	.008	.003	
10.0	.128	.063	.020	.110	.055	.017	.077	.039	.012	.045	.023	.007	.014	.007	.002	

H(β) Range:-90 - 90DEG
H(β) Interval: 1.0DEG
Test Speed: HIGH
Temperature:25.3DEG
Operators:DAMIN
Test Date:2022-08-09

V(B) Range:-75 - 75DEG
V(B) Interval: 5.0DEG
Test System:EVERFINE GO-2000B_V1 SYSTEM V2.0.400
Humidity:65.0%
Test Distance:9.200m [K=1.0000]
Remarks:

UGR(Unified Glare Rating) Table

Test:U:24.000V I:0.0770A P:3.0000W PF:1.0000 Freq:50.00Hz Lamp Flux:13.4784x1 lm										
NAME: KS-TMDM-X3W					TYPE:			WEIGHT:		
SPEC.:					DIM.:			SERIAL No.:KS-TMDM-X3W		
MFR.: KAMS					SUR.:			Shielding Angle:		
ceiling/cavity	0.7	0.7	0.5	0.5	0.3	0.7	0.7	0.5	0.5	0.3
walls	0.5	0.3	0.5	0.3	0.3	0.5	0.3	0.5	0.3	0.3
working plane	0.2	0.2	0.2	0.2	0.2	0.2	0.2	0.2	0.2	0.2
Room dimensions	Viewed crosswise					Viewed endwise				
x = 2H y = 2H	33.3	35.3	33.6	35.5	35.8	27.8	29.7	28.1	29.9	30.2
3H	36.4	38.2	36.7	38.5	38.8	30.5	32.3	30.8	32.5	32.8
4H	38.3	40.0	38.6	40.3	40.6	32.0	33.7	32.3	34.0	34.3
6H	42.4	44.1	42.7	44.4	44.7	32.2	33.9	32.6	34.2	34.5
8H	45.0	46.6	45.3	46.9	47.2	32.2	33.8	32.5	34.1	34.4
12H	46.5	48.1	46.9	48.4	48.8	32.1	33.7	32.5	34.0	34.3
4H 2H	36.9	38.6	37.2	38.9	39.2	34.5	36.3	34.9	36.5	36.8
3H	42.9	44.5	43.3	44.8	45.2	35.4	37.0	35.8	37.3	37.6
4H	45.1	46.6	45.5	46.9	47.3	36.0	37.5	36.4	37.9	38.2
6H	47.2	48.5	47.6	48.9	49.3	36.1	37.5	36.6	37.9	38.2
8H	48.6	49.8	49.0	50.2	50.6	36.1	37.4	36.5	37.7	38.1
12H	49.6	50.8	50.1	51.2	51.7	36.0	37.2	36.5	37.6	38.0
8H 4H	46.0	47.3	46.4	47.6	48.1	41.4	42.7	41.8	43.0	43.4
6H	48.3	49.4	48.8	49.9	50.3	41.4	42.5	41.8	42.9	43.3
8H	49.6	50.6	50.1	51.0	51.5	41.3	42.3	41.8	42.8	43.2
12H	50.7	51.6	51.2	52.1	52.5	41.3	42.2	41.8	42.6	43.1
12H 4H	46.0	47.1	46.4	47.5	48.0	42.1	43.3	42.6	43.7	44.1
6H	48.3	49.3	48.8	49.7	50.2	42.2	43.1	42.6	43.6	44.0
8H	49.6	50.5	50.1	50.9	51.4	42.1	43.0	42.6	43.5	43.9
Variations with the observer position at spacings:										
S = 1.0H	+ 0.2 / - 0.3					+ 0.5 / - 0.4				
1.5H	+ 0.3 / - 0.5					+ 0.7 / - 0.4				
2.0H	+ 0.7 / - 0.9					+ 2.4 / - 2.4				

CIE Pub.117, 13.48 lm Total Lamp Luminous Flux Correct ($8\log(F/F0) = -15.0$)

H(β) Range:-90 - 90DEG
H(β) Interval: 1.0DEG
Test Speed: HIGH
Temperature:25.3DEG
Operators:DAMIN
Test Date:2022-08-09

V(B) Range:-75 - 75DEG
V(B) Interval: 5.0DEG
Test System:EVERFINE GO-2000B_V1 SYSTEM V2.0.400
Humidity:65.0%
Test Distance:9.200m [K=1.0000]
Remarks:

UTILIZATION FACTORS TABLE

Test:U:24.000V I:0.0770A P:3.0000W PF:1.0000 Freq:50.00Hz Lamp Flux:13.4784x1 lm		
NAME: KS-TMDM-X3W	TYPE:	WEIGHT:
SPEC.:	DIM.:	SERIAL No.:KS-TMDM-X3W
MFR.: KAMS	SUR.:	Shielding Angle:

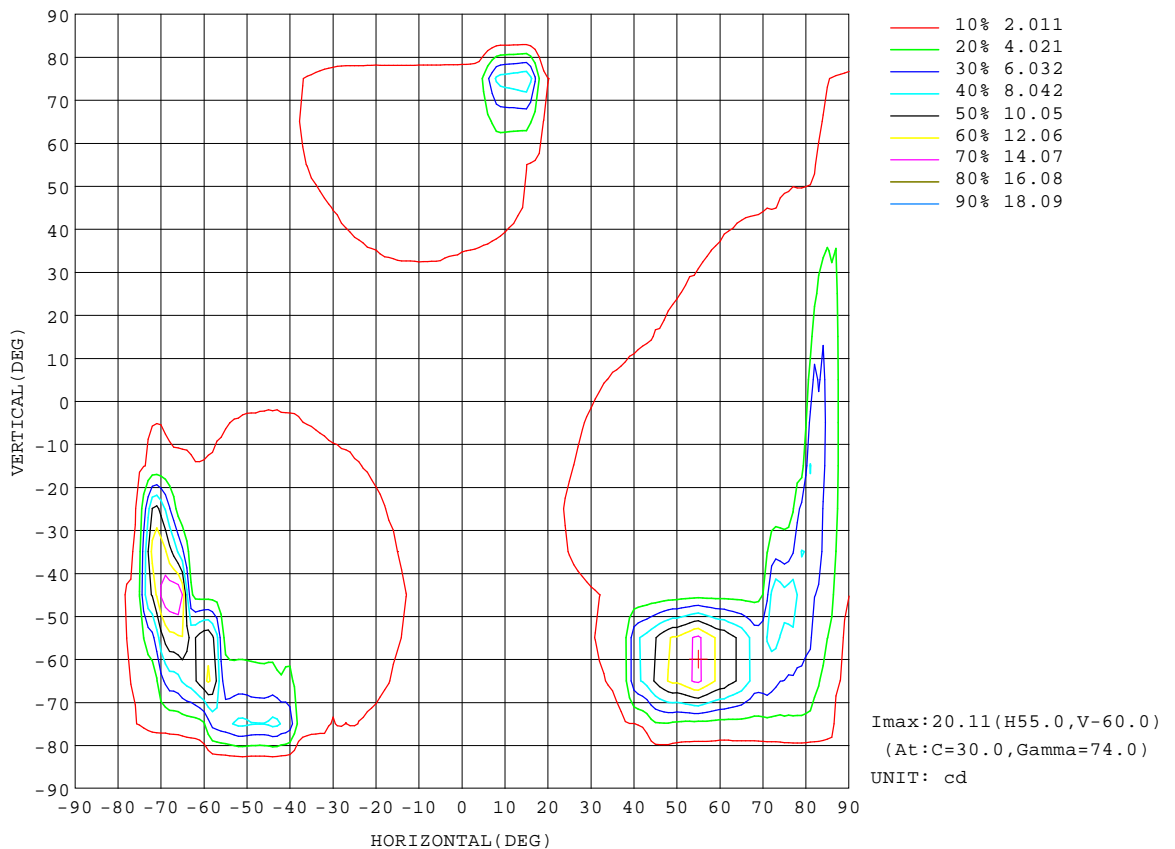
REFLECTANCE										
Ceiling	0.8	0.8	0.8	0.7	0.7	0.7	0.5	0.5	0.5	0
Walls	0.7	0.5	0.3	0.7	0.5	0.3	0.7	0.5	0.3	0
Working plane	0.2	0.2	0.2	0.2	0.2	0.2	0.2	0.2	0.2	0
ROOM INDEX	UTILIZATION FACTORS(PERCENT) $k(RI) \times RCR = 5$									
$k = 0.60$	44	30	22	43	30	22	42	29	21	14
0.80	53	38	28	51	37	28	49	36	28	19
1.00	60	45	35	59	44	35	56	47	34	25
1.25	67	53	42	65	52	42	62	50	41	31
1.50	73	59	49	71	58	48	67	56	47	37
2.00	82	69	59	79	67	58	75	65	57	46
2.50	87	75	66	85	74	65	80	71	63	53
3.00	92	81	73	89	79	72	84	76	69	59
4.00	98	89	81	95	87	80	90	83	77	67
5.00	102	94	87	99	92	86	94	88	83	72
ROOM INDEX	UF(total)									Direct
According to DIN EN 13032-2 2004			Suspended				SHRNOM = 1.25			

H(β) Range:-90 - 90DEG
H(β) Interval: 1.0DEG
Test Speed: HIGH
Temperature:25.3DEG
Operators:DAMIN
Test Date:2022-08-09

V(B) Range:-75 - 75DEG
V(B) Interval: 5.0DEG
Test System:EVERFINE GO-2000B_V1 SYSTEM V2.0.400
Humidity:65.0%
Test Distance:9.200m [K=1.0000]
Remarks:

ISOCANDELA DIAGRAM

Test:U:24.000V I:0.0770A P:3.0000W PF:1.0000 Freq:50.00Hz Lamp Flux:13.4784x1 lm		
NAME: KS-TMDM-X3W	TYPE:	WEIGHT:
SPEC.:	DIM.:	SERIAL No.:KS-TMDM-X3W
MFR.: KAMS	SUR.:	Shielding Angle:

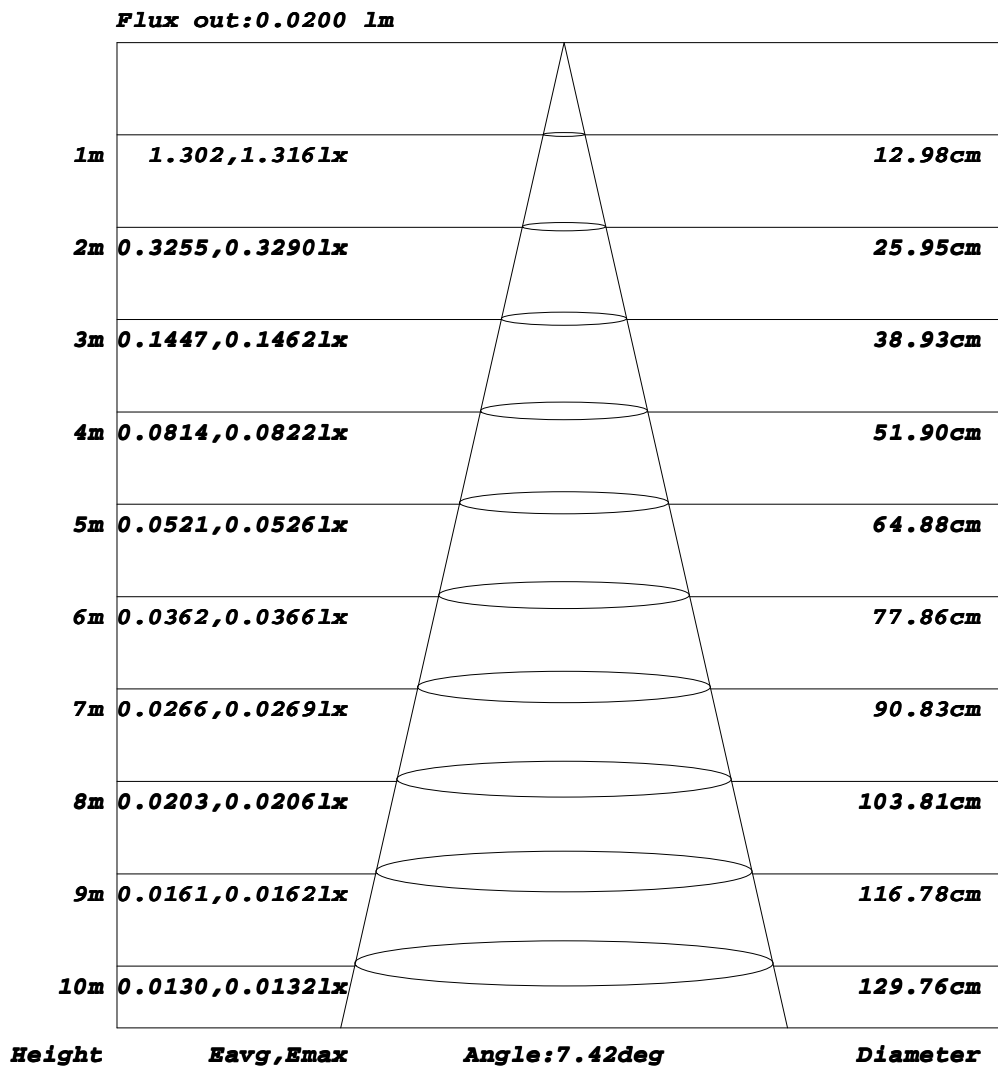


H(β) Range: -90 - 90DEG
H(β) Interval: 1.0DEG
Test Speed: HIGH
Temperature: 25.3DEG
Operators: DAMIN
Test Date: 2022-08-09

V(B) Range: -75 - 75DEG
V(B) Interval: 5.0DEG
Test System: EVERFINE GO-2000B_V1 SYSTEM V2.0.400
Humidity: 65.0%
Test Distance: 9.200m [K=1.0000]
Remarks:

AAI Figure

Test:U:24.000V I:0.0770A P:3.0000W PF:1.0000 Freq:50.00Hz Lamp Flux:13.4784x1 lm		
NAME: KS-TMDM-X3W	TYPE:	WEIGHT:
SPEC.:	DIM.:	SERIAL No.:KS-TMDM-X3W
MFR.: KAMS	SUR.:	Shielding Angle:



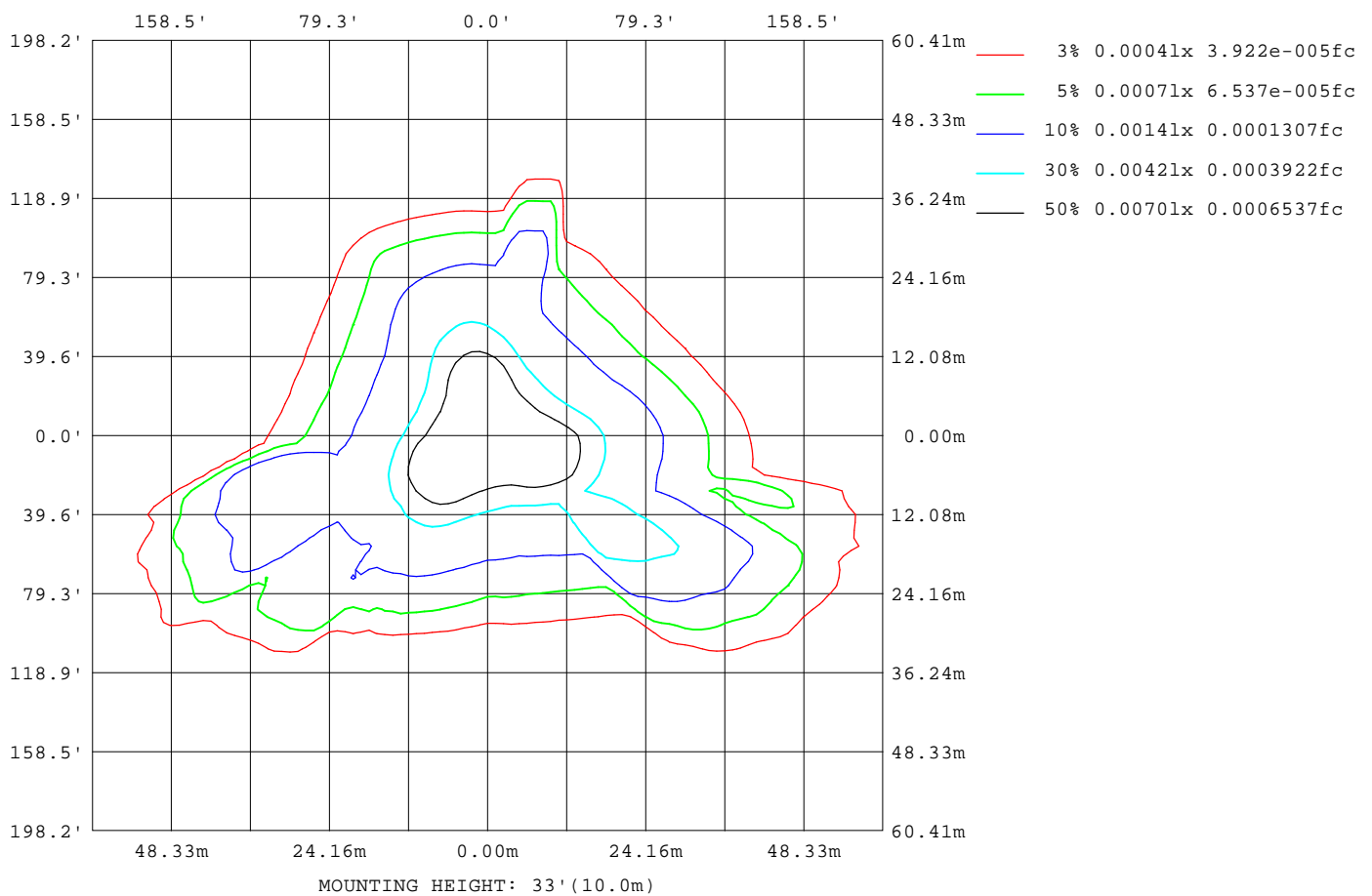
Note:The Curves indicate the illuminated area and the average illumination when the luminaire is at different distance.

H(β) Range:-90 - 90DEG
H(β) Interval: 1.0DEG
Test Speed: HIGH
Temperature:25.3DEG
Operators:DAMIN
Test Date:2022-08-09

V(B) Range:-75 - 75DEG
V(B) Interval: 5.0DEG
Test System:EVERFINE GO-2000B_V1 SYSTEM V2.0.400
Humidity:65.0%
Test Distance:9.200m [K=1.0000]
Remarks:

ISOLUX DIAGRAM

Test:U:24.000V I:0.0770A P:3.0000W PF:1.0000 Freq:50.00Hz Lamp Flux:13.4784x1 lm		
NAME: KS-TMDM-X3W	TYPE:	WEIGHT:
SPEC.:	DIM.:	SERIAL No.:KS-TMDM-X3W
MFR.: KAMS	SUR.:	Shielding Angle:



H(β) Range:-90 - 90DEG
H(β) Interval: 1.0DEG
Test Speed: HIGH
Temperature:25.3DEG
Operators:DAMIN
Test Date:2022-08-09

V(B) Range:-75 - 75DEG
V(B) Interval: 5.0DEG
Test System:EVERFINE GO-2000B_V1 SYSTEM V2.0.400
Humidity:65.0%
Test Distance:9.200m [K=1.0000]
Remarks:

LED Avg.L Report

Test:U:24.000V I:0.0770A P:3.0000W PF:1.0000 Freq:50.00Hz Lamp Flux:13.4784x1 lm		
NAME: KS-TMDM-X3W	TYPE:	WEIGHT:
SPEC.:	DIM.:	SERIAL No.:KS-TMDM-X3W
MFR.: KAMS	SUR.:	Shielding Angle:

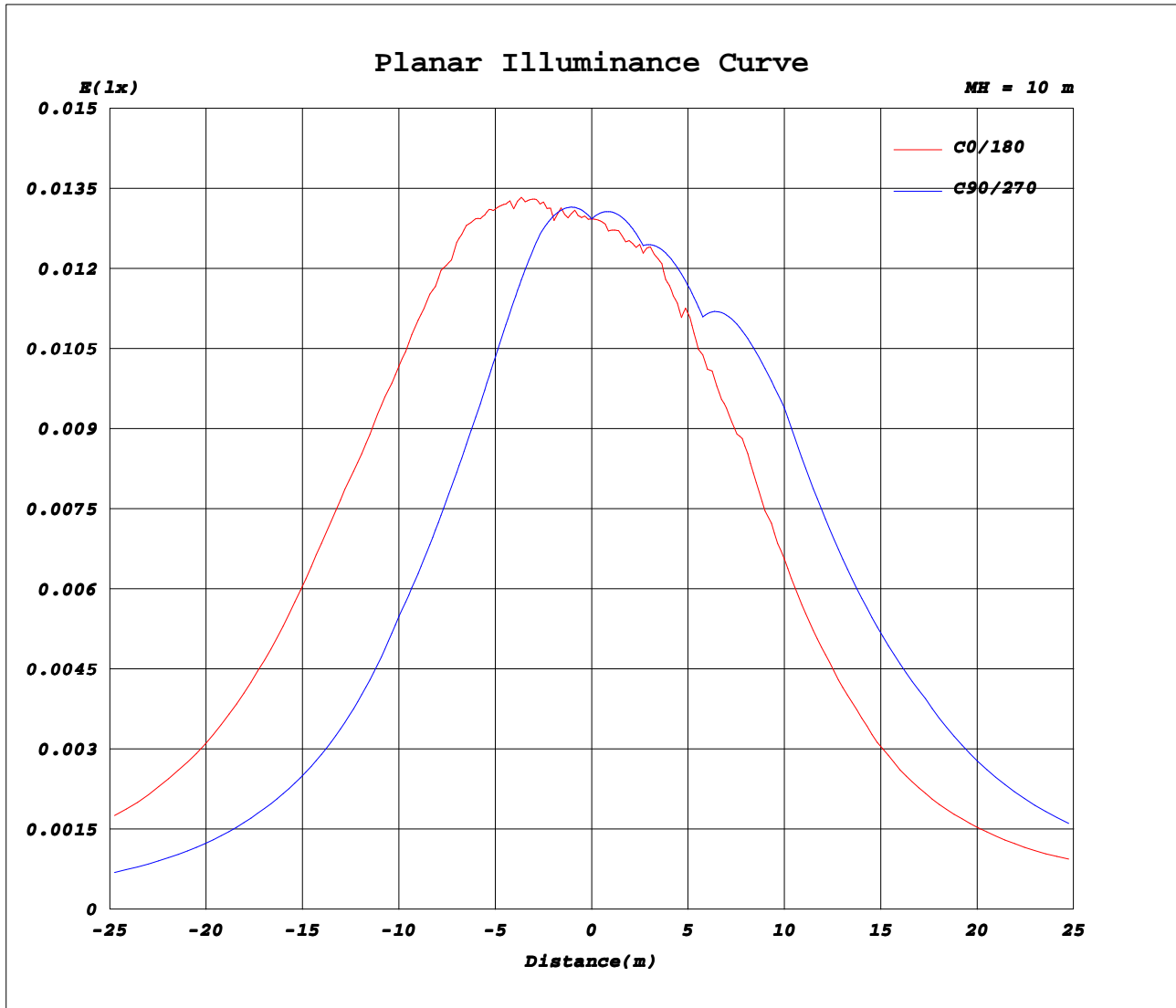
AvgL	cd/m2
L_0~180(65)av	3064
L_0~180(75)av	4572
L_0~180(85)av	20529
L_90~270(65)av	2641
L_90~270(75)av	4050
L_90~270(85)av	0
L_45(65)av	4206
L_45(75)av	7471
L_45(85)av	0

Standard: GB/T 29293-2012

H(β) Range:-90 - 90DEG
H(β) Interval: 1.0DEG
Test Speed: HIGH
Temperature:25.3DEG
Operators:DAMIN
Test Date:2022-08-09

V(B) Range:-75 - 75DEG
V(B) Interval: 5.0DEG
Test System:EVERFINE GO-2000B_V1 SYSTEM V2.0.400
Humidity:65.0%
Test Distance:9.200m [K=1.0000]
Remarks:

Planar Illuminance Curve



H(β) Range:-90 - 90DEG
H(β) Interval: 1.0DEG
Test Speed: HIGH
Temperature:25.3DEG
Operators:DAMIN
Test Date:2022-08-09

V(B) Range:-75 - 75DEG
V(B) Interval: 5.0DEG
Test System:EVERFINE GO-2000B_V1 SYSTEM V2.0.400
Humidity:65.0%
Test Distance:9.200m [K=1.0000]
Remarks:

LUMINOUS DISTRIBUTION INTENSITY DATA

Test:U:24.000V I:0.0770A P:3.0000W PF:1.0000 Freq:50.00Hz Lamp Flux:13.4784x1 lm		
NAME: KS-TMDM-X3W	TYPE:	WEIGHT:
SPEC.:	DIM.:	SERIAL No.:KS-TMDM-X3W
MFR.: KAMS	SUR.:	Shielding Angle:

Table--2

UNIT: cd

C (DEG) γ (DEG)	95	100	105	110	115	120	125	130	135	140	145	150	155	160	165	170	175	180	185
0	1.29	1.29	1.29	1.29	1.29	1.29	1.29	1.29	1.29	1.29	1.29	1.29	1.29	1.29	1.29	1.29	1.29	1.29	1.29
5	1.33	1.33	1.33	1.34	1.34	1.33	1.33	1.33	1.33	1.33	1.33	1.32	1.31	1.31	1.30	1.30	1.29	1.29	1.29
10	1.37	1.38	1.38	1.39	1.40	1.39	1.39	1.39	1.40	1.40	1.39	1.38	1.37	1.37	1.35	1.34	1.32	1.31	1.31
15	1.42	1.43	1.45	1.45	1.47	1.48	1.49	1.51	1.51	1.50	1.50	1.49	1.48	1.47	1.45	1.42	1.39	1.36	1.37
20	1.44	1.47	1.49	1.52	1.55	1.60	1.61	1.63	1.66	1.66	1.68	1.67	1.66	1.63	1.60	1.56	1.51	1.46	1.45
25	1.45	1.52	1.54	1.60	1.65	1.70	1.75	1.82	1.85	1.90	1.90	1.89	1.85	1.80	1.75	1.67	1.58	1.49	1.49
30	1.47	1.56	1.61	1.69	1.77	1.85	1.96	2.04	2.10	2.14	2.16	2.15	2.10	2.02	1.94	1.83	1.72	1.60	1.57
35	1.52	1.59	1.69	1.79	1.92	2.07	2.20	2.32	2.41	2.46	2.46	2.41	2.35	2.28	2.17	2.04	1.88	1.71	1.65
40	1.57	1.64	1.77	1.92	2.10	2.29	2.46	2.62	2.74	2.78	2.79	2.76	2.69	2.60	2.46	2.27	2.05	1.82	1.72
45	1.62	1.70	1.87	2.07	2.28	2.52	2.74	2.92	3.03	3.11	3.12	3.08	3.01	2.86	2.66	2.39	2.13	1.86	1.74
50	1.60	1.71	1.90	2.14	2.44	2.74	3.04	3.21	3.31	3.35	3.39	3.38	3.23	2.99	2.69	2.42	2.14	1.85	1.71
55	1.58	1.71	1.89	2.16	2.50	2.83	3.13	3.36	3.52	3.54	3.51	3.42	3.30	2.96	2.61	2.32	2.04	1.82	1.68
60	1.56	1.70	1.88	2.20	2.54	2.89	3.14	3.32	3.43	3.38	3.48	3.22	3.00	2.76	2.43	2.12	1.92	1.74	1.62
65	1.49	1.64	1.84	2.12	2.47	2.83	3.07	3.22	3.20	3.09	3.16	3.03	2.92	2.79	2.47	2.25	1.99	1.72	1.62
70	1.43	1.58	1.77	1.99	2.28	2.58	2.93	3.13	3.52	3.08	3.11	3.27	6.45	3.27	7.01	5.98	2.22	1.82	1.62
75	1.36	1.52	1.68	1.84	2.07	2.24	2.74	3.84	6.17	5.51	4.89	9.74	12.7	12.7	15.2	13.2	2.73	1.77	1.55
80	0.01	0.05	0.12	0.23	0.41	0.60	1.14	3.40	6.88	8.03	7.22	8.62	7.63	8.09	5.03	2.57	1.77	1.58	1.48
85	0.00	0.00	0.00	0.00	0.00	0.00	0.00	0.00	0.00	0.00	0.00	0.00	0.97	2.23	2.24	1.94	1.74	1.62	1.50
90	0.00	0.00	0.00	0.00	0.00	0.00	0.00	0.00	0.00	0.00	0.00	0.00	0.00	0.00	0.00	0.00	0.00	0.00	0.00

H(β) Range:-90 - 90DEG
H(β) Interval: 1.0DEG
Test Speed: HIGH
Temperature:25.3DEG
Operators:DAMIN
Test Date:2022-08-09

V(B) Range:-75 - 75DEG
V(B) Interval: 5.0DEG
Test System:EVERFINE GO-2000B_V1 SYSTEM V2.0.400
Humidity:65.0%
Test Distance:9.200m [K=1.0000]
Remarks:

